

SANIVITE® +



Product Ref: 6004

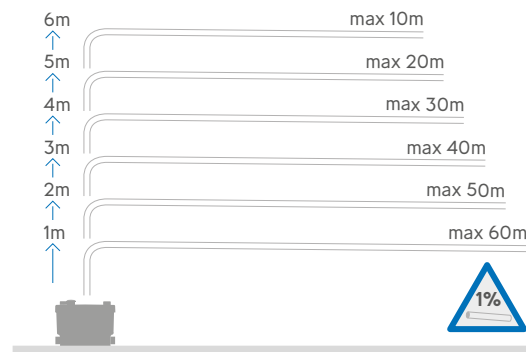
Ideally suited to a kitchen or utility room, Sanivite +’s powerful pump has four inlets for connection to domestic sinks or appliances. With compact dimensions, Sanivite + can be concealed in a kitchen unit or behind a demountable panel to give access for servicing.

NEW

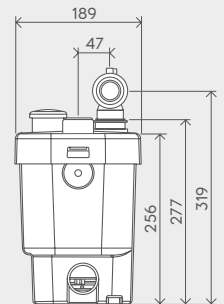
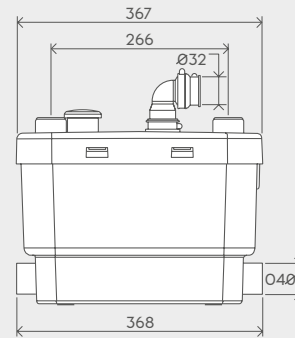
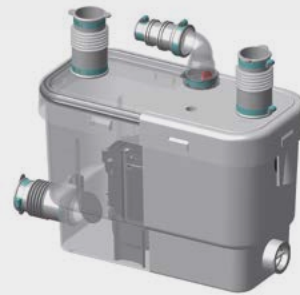
Why choose this product?

- Ideal for hot, soapy water
- Four inlets
- Powerful, quiet pump
- Low activation level (95mm)
- Compact for concealed installation

Vertical/horizontal performance



Up to 5 years warranty



Discharge Pipework
32 mm

Product Weight
6.4kg

Motor Power
400 Watts

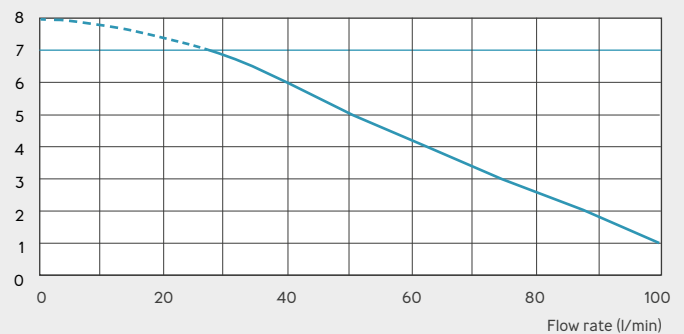
Inlet Pipework
40mm

Voltages
220-240 V/50 Hz

IP Rating
IP44

Working Waste Water Temp
35°C max 60°C

Discharge height (m)



Check out our full range of macerators

Saniflo Macerators

Flo-Force Macerators

Stuart Turner Macerators

Grundfos Macerators

Don't Forget These Macerator Accessories from Saniflo

Saniflo Sani Alarm

Saniflo Descaler

plumbworld
Big brands, small prices.