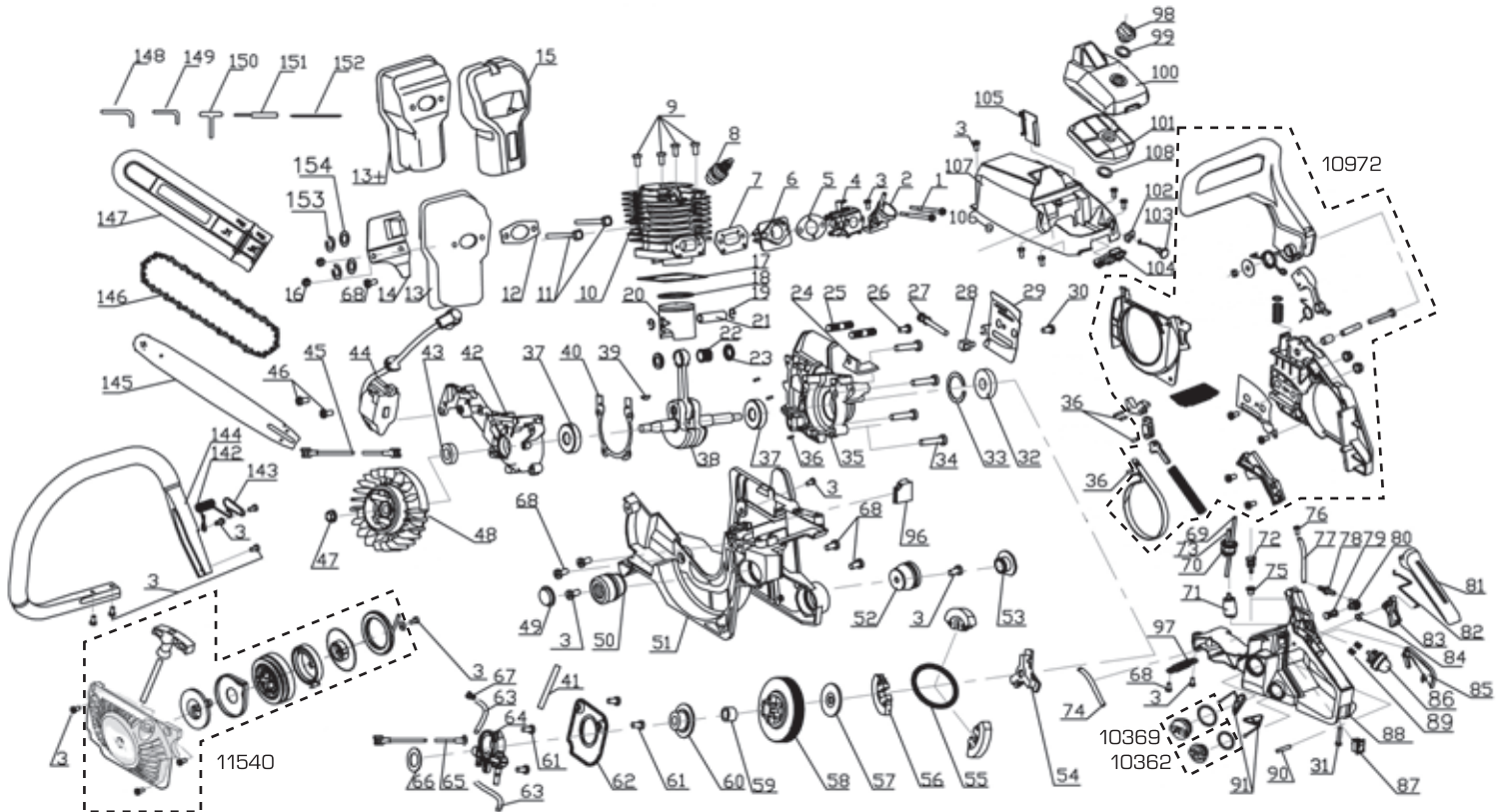


PETROL CHAINSAW

02567 - CSP3940 SPARE PARTS DRAWING & LISTING



KEY No.	PART No.	STOCK No.	DESCRIPTION
1	YCSP3940-1	05864	Carburettor Screw
2	YCSP3940-2	05921	Air Support Hose
3	YCSP3940-3	05947	Screw
4	YCSP3940-4	06002	Carburettor
5	YCSP3940-5	06044	Carburettor Washer
6	YCSP3940-6	06309	Air Hose
7	YCSP3940-7	06458	Air Hose Washer
8	YCSP3940-8	06474	Spark Plug
9	YCSP3940-9	06499	M5 x 20 Screws
10	YCSP3940-10	06573	Cylinder
11	YCSP3940-11	06666	Muffler Screw
12	YCSP3940-12	06674	Muffler Washer
13	YCSP3940-13	06707	Muffler
14	YCSP3940-14	06715	Muffler Shield
15	YCSP3940-15	07565	Muffler Cover
16	YCSP3940-16	07566	M5 Screw
17	YCSP3940-17	07730	Cylinder Washer
18	YCSP3940-18	07731	Piston Ring
19	YCSP3940-19	07732	Snap Ring
20	YCSP3940-20	07733	Piston
21	YCSP3940-21	07824	Piston Pin
22	YCSP3940-22	07838	Needle Ball Bearing
23	YCSP3940-23	07983	Snap Ring
24	YCSP3940-24	07934	Chain Catcher

KEY No.	PART No.	STOCK No.	DESCRIPTION
25	YCSP3940-25	07987	Stud Bar
26	YCSP3940-26	07990	Chain Catcher Screw
27	YCSP3940-27	07991	Stud M5 x 48
28	YCSP3940-28	03103	Chain Adjuster
29	YCSP3940-29	08140	Plate
30	YCSP3940-30	08144	Screw M4 x 10
31	YCSP3940-31	08172	Bushing
32	YCSP3940-32	08383	Oil Seal
33	YCSP3940-33	08391	Snap Ring
34	YCSP3940-34	08395	Screw
35	YCSP3940-35	08459	Right Crank Case
36	YCSP3940-36	08463	Pin
37	YCSP3940-37	08470	Ball Bearing
38	YCSP3940-38	08541	Crank Shaft Assembly
40	YCSP3940-40	08573	Crank Case Washer
41	YCSP3940-41	08575	Ball Bearing
42	YCSP3940-42	08577	Left Crankcase
43	YCSP3940-43	08578	Oil Seal
44	YCSP3940-44	08579	Electrical Ignition
45	YCSP3940-45	08601	Wire Stop
46	YCSP3940-46	08602	Screw
47	YCSP3940-47	08605	Nut
48	YCSP3940-48	08650	Flywheel
49	YCSP3940-49	08708	Rubber Strap



PETROL CHAINSAW

02567 - CSP3940 SPARE PARTS LISTING

KEY No.	PART No.	STOCK No.	DESCRIPTION
50	YCSP3940-50	08709	Rubber Bumper (long)
51	YCSP3940-51	09112	Crank Case
52	YCSP3940-52	09115	Rubber Bumper (short)
53	YCSP3940-53	09130	Rubber Strap
54	YCSP3940-54	09163	Preserve Support
55	YCSP3940-55	09290	Clutch Spring
56	YCSP3940-56	09432	Clutch Assembly
57	YCSP3940-57	09434	Clutch Washer
58	YCSP3940-58	09437	Drum Clutch Cover
59	YCSP3940-59	09438	Needle Bearing
60	YCSP3940-60	09439	Worm Gear
61	YCSP3940-61	09501	Screw
62	YCSP3940-62	09537	Oil Pump Cover
63	YCSP3940-63	09577	Oil Hose
64	YCSP3940-64	09712	Oil Pump
65	YCSP3940-65	09714	Ground Wire
66	YCSP3940-66	09777	Washer
67	YCSP3940-67	09815	Oil Outlet
68	YCSP3940-68	09901	Screw
69	YCSP3940-69	09903	Fuel Hose
70	YCSP3940-70	09906	Oil Hose Support
71	YCSP3940-71	09908	Filter
72	YCSP3940-72	09909	Lower Balancer
73	YCSP3940-73	09910	Oil Return Pipe
74	YCSP3940-74	09911	Chain Oil Hose
75	YCSP3940-75	10124	Balance Support
76	YCSP3940-76	10125	Screw
77	YCSP3940-77	10127	Aerate Spigot
78	YCSP3940-78	10128	Oil Pipe Connection
79	YCSP3940-79	10136	Vent Filter
80	YCSP3940-80	10141	Oil Outlet
81	YCSP3940-81	10144	Rear Handle Cover
82	YCSP3940-82	10146	Rod Throttle
83	YCSP3940-83	10147	Trigger
84	YCSP3940-84	10158	Trigger Spring
85	YCSP3940-85	10264	Safety Trigger Lever
86	YCSP3940-86	10276	Fuel primer bulb
87	YCSP3940-87	10309	Stop Switch
88	YCSP3940-88	10343	Tank Assembly
90	YCSP3940-90	10346	Pin
92	YCSP3940-92	10362	Chain Oil Gasket
93	YCSP3940-93	10362	Chain Oil Cover
94	YCSP3940-94	10369	Fuel Oil Cover
95	YCSP3940-95	10369	Fuel Cap Gasket
96	YCSP3940-96	10380	Stop
97	YCSP3940-97	10444	Spring
98	YCSP3940-98	10454	Air Filter Knob
99	YCSP3940-99	10477	Air Filter Gasket
100	YCSP3940-100	10509	Air Filter Cover
101	YCSP3940-101	10522	Air Filter

KEY No.	PART No.	STOCK No.	DESCRIPTION
102	YCSP3940-102	10575	Choke Grommet
103	YCSP3940-103	10608	Choke Knob
104	YCSP3940-104	10610	Rubber Strap
105	YCSP3940-105	10612	Air Filter Washer
107	YCSP3940-107	10623	Top Yellow Cover
108	YCSP3940-108	10632	Felt Rubber
109	YCSP3940-109	10972	Chain Brake Lever
110	YCSP3940-110	10972	Brake Leverage
111	YCSP3940-111	10972	Leverage Pin
112	YCSP3940-112	10972	Leverage Pin
113	YCSP3940-113	10972	Screw
114	YCSP3940-114	10972	Nut
115	YCSP3940-115	10972	Brake Housing
116	YCSP3940-116	10972	Screw
117	YCSP3940-117	10972	Plate Bar
118	YCSP3940-118	10972	Compress Spring Leverage
119	YCSP3940-119	10972	Support Spring
120	YCSP3940-120	10972	Leverage Spring
121	YCSP3940-121	10972	Nut
122	YCSP3940-122	10972	Washer
123	YCSP3940-123	10972	Brake Lever Spring
124	YCSP3940-124	10972	Chain Brake Cover
125	YCSP3940-125	10972	Screw
126	YCSP3940-126	10972	Leverage Brake Assistant
127	YCSP3940-127	10972	Leverage Brake Main
128	YCSP3940-128	10972	Pin
129	YCSP3940-129	10972	Air Conduit
130	YCSP3940-130	10972	Plate Brake
131	YCSP3940-131	10972	Spring Brake Lever
132	YCSP3940-132	10972	Band Brake
133	YCSP3940-133	10972	Baffle Fan
134	YCSP3940-134	11540	Washer
135	YCSP3940-135	11540	Rope Starter
136	YCSP3940-136	11540	Pulley Starter
137	YCSP3940-137	11540	Starter Spring Cover
138	YCSP3940-138	11540	Starter Spring
139	YCSP3940-139	11540	Jacket
140	YCSP3940-140	11540	Auxillary Starter Housing
141	YCSP3940-141	11540	Starter Handle
142	YCSP3940-142	11544	Handle Spring
143	YCSP3940-143	11546	Spring Cover
144	YCSP3940-144	11547	Front Handle
145	ACSP3940-145	11549	Guide Bar
146	ACSP3940-146	11551	Saw Chain
147	YCSP3940-147	11555	Bar Protector
148	ACSP3940-148	11569	Hexagon Ring Spanner T4
149	ACSP3940-149	11571	Hexagon Ring Spanner T3
150	ACSP3940-150	11577	Plug Wrench
151	ACSP3940-151	11603	Screwdriver
152	ACSP3940-152	11665	Screwdriver for Adjusting Carburettor

Helpline: +44 (0) 23 8049 4344 Sales Desk: +44 (0) 23 8049 4333 General Enquiries: +44 (0) 23 8026 6355 internet: drapertools.com email: sales@drapertools.com