



SPARE PARTS LISTING SHEET FOR

Bench Mounted Spindle Moulder

Stock No.09536

Part No.BMSM

KEY No.	PART No.	STOCK No.	DESCRIPTION
1	YBMSM-01	12551	Hand dial.
2	YBMSM-02	12552	Hand dial.
3	YBMSM-03	12554	Washer.
4	YBMSM-04	12555	Fence.
5	YBMSM-05	12556	Screw.
6	YBMSM-06	12559	Back plate.
7	YBMSM-07	12560	Back plate bracket.
8	YBMSM-08	12561	Screw.
9	YBMSM-09	12563	Washer.
10	YBMSM-10	12566	Nut.
11	YBMSM-11	12570	Circlip.
12	YBMSM-12	12572	Rear fence.
13	YBMSM-13	12577	Right fence.
14	YBMSM-14	12582	Table.
15	YBMSM-15	12583	Screw.
16	YBMSM-16	12584	Table.
17	YBMSM-17	12586	Screw.
18	YBMSM-18	12587	Rule.
19	YBMSM-19	12591	Insert ring.
20	YBMSM-20	12592	Plate.
21	YBMSM-21	12593	Washer.
22	YBMSM-22	12594	Spring washer.
23	YBMSM-23	12595	Spring.
24	YBMSM-24	12596	Screw.
25	YBMSM-25	12597	Left fence.
26	YBMSM-26	12598	Screw.
27	YBMSM-27	12599	Screw.
28	YBMSM-28	12601	Plate.
29	YBMSM-29	12602	Spring.
30	YBMSM-30	12604	Rule.
31	YBMSM-31	12608	Angle plate.
32	YBMSM-32	12609	Screw.
33	YBMSM-33	12610	Press board.

KEY No.	PART No.	STOCK No.	DESCRIPTION
34	YBMSM-34	12611	Bracket.
35	YBMSM-35	12612	Screw.
36	YBMSM-36	12617	Screw.
37	YBMSM-37	12628	Housing.
38	YBMSM-38	12634	Screw.
39	YBMSM-39	12635	Washer.
40	YBMSM-40	12638	Front housing.
41	YBMSM-41	12639	Plug and cable.
42	YBMSM-42	12640	Housing.
43	YBMSM-43	12641	Spring washer.
44	YBMSM-44	12642	Overload switch.
45	YBMSM-45	12643	Screw.
46	YBMSM-46	12644	Switch.
47	YBMSM-47	12645	Cable strain.
49	YBMSM-49	12648	Cable clamp.
50	YBMSM-50	12649	Screw.
51	YBMSM-51	12650	Base plate.
52	YBMSM-52	12651	Axle.
53	YBMSM-53	12652	Pin.
54	YBMSM-54	12654	Nut.
55	YBMSM-55	12656	Handwheel.
56	YBMSM-56	12657	Nut.
57	YBMSM-57	12658	Handle.
58	YBMSM-58	12660	Screw.
59	YBMSM-59	12662	Cap.
60	YBMSM-60	12663	Motor plate.
61	YBMSM-61	12665	Motor.
62	YBMSM-62	12671	Screw.
63	YBMSM-63	12675	Spring washer.
64	YBMSM-64	12676	Washer.
65	YBMSM-65	12677	Motor plate.
66	YBMSM-66	12678	Bracket.
67	YBMSM-67	12680	Rod.

Helpline: (023) 8049 4344. Sales Desk: (023) 8049 4333. General Enquiries: (023) 8026 6355.

DRAPER TOOLS LTD, HURSLEY ROAD, CHANDLER'S FORD, EASTLEIGH, HANTS. SO53 1YF. U.K. Website: www.drapertools.com e-mail: sales@drapertools.com

DRAPER[®]

SPARE PARTS LISTING SHEET FOR

Bench Mounted Spindle Moulder

Stock No.09536

Part No.BMSM

KEY No.	PART No.	STOCK No.	DESCRIPTION
68	YBMSM-68	12682	Guide rail.
69	YBMSM-69	12683	Module.
70	YBMSM-70	12688	Circlip.
71	YBMSM-71	12689	Screw.
72	YBMSM-72	12703	Spring washer.
73	YBMSM-73	12706	Nut.
74	YBMSM-74	12707	Washer.
75	YBMSM-75	12708	Support bracket.
76	YBMSM-76	12709	Gear.
77	YBMSM-77	12710	Ring.
78	YBMSM-78	12711	Screw.
79	YBMSM-79	12712	Key.
80	YBMSM-80	12713	Gear bracket.
81	YBMSM-81	12714	Gear.
82	YBMSM-82	12715	Bearing.
83	YBMSM-83	12716	Screw.
84	YBMSM-84	12717	Screw.
85	YBMSM-85	12718	Screw.

KEY No.	PART No.	STOCK No.	DESCRIPTION
86	YBMSM-86	12719	Spring washer.
87	YBMSM-87	12721	Washer.
88	YBMSM-88	12724	Screw.
89	YBMSM-89	12755	Screw.
90	YBMSM-90	12757	Insert.
91	YBMSM-91	12758	Cover plate.
92	YBMSM-92	12759	Circlip.
93	YBMSM-93	12760	Screw.
94	YBMSM-94	28806	Nut.
95	YBMSM-95	See your local Draper Stockist	Collet.
96	YBMSM-96	12761	Spring.
97	YBMSM-97	12762	Spring support.
98	YBMSM-98	82630	Threaded rod.
99	YBMSM-99	06894	Vario speed control.
100	YBMSM-100	82190	Hose adaptor.
101	YBMSM-101	82191	Guard.
102	YBMSM-102	82192	Pin.

Helpline: (023) 8049 4344. Sales Desk: (023) 8049 4333. General Enquiries: (023) 8026 6355.DRAPER TOOLS LTD, HURSLEY ROAD, CHANDLER'S FORD, EASTLEIGH, HANTS. SO53 1YF. U.K. Website: www.drapertools.com e-mail: sales@drapertools.com

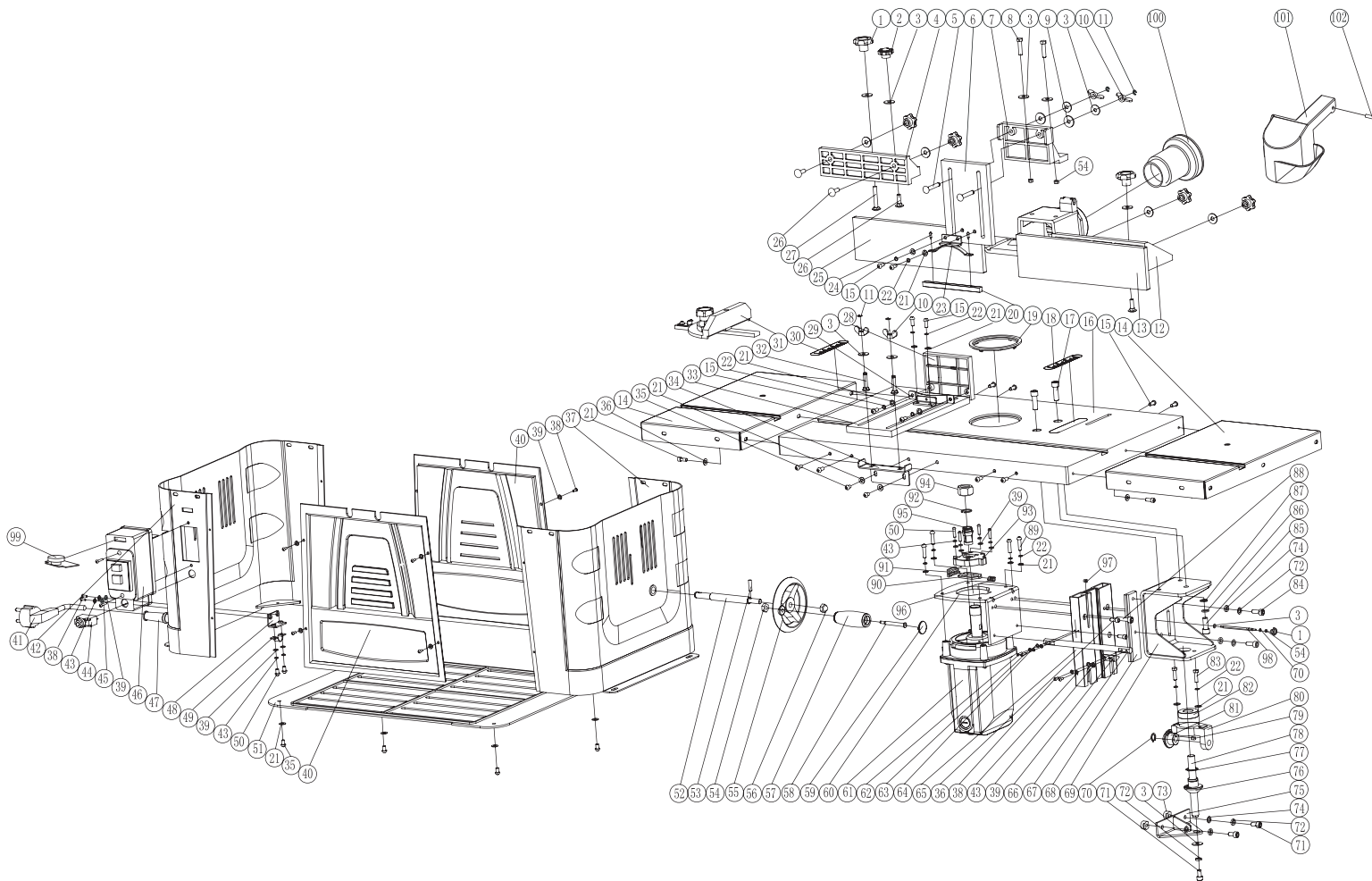


SPARE PARTS DRAWING SHEET FOR

Bench Mounted Spindle Moulder

Stock No.09536

Part No.BMSM



Helpline: (023) 8049 4344. **Sales Desk:** (023) 8049 4333. **General Enquiries:** (023) 8026 6355.

DRAPER TOOLS LTD, HURSLEY ROAD, CHANDLER'S FORD, EASTLEIGH, HANTS. SO53 1YF. U.K. Website: www.drapertools.com e-mail: sales@drapertools.com