



## SPARE PARTS LISTING SHEET FOR

# 2.2kVA/2.0kW Petrol Generator

**Stock No. 16066**

**Part No. PG253W**

KEY No.	PART No.	STOCK No.	DESCRIPTION
1	Y-PG253W-01	16977	Recoil starter
2	Y-PG253W-02	16978	Starter cup
3	Y-PG253W-03	16979	Flywheel fan
4	Y-PG253W-04	16980	Flywheel
5	Y-PG253W-05	16982	Oil seal
6	Y-PG253W-06	16983	Bearing 6205
7	Y-PG253W-07	16985	Crankcase
8	Y-PG253W-08	16986	Crankcase gasket
9	Y-PG253W-09	16987	Crankshaft assembly
10	Y-PG253W-10	16988	Crankcase cover
11	Y-PG253W-11	16989	Ignition coil assembly
12	Y-PG253W-12	16990	O clip
13	Y-PG253W-13	16991	Tappet
14	Y-PG253W-14	16992	Camshaft assembly
15	Y-PG253W-15	16993	Driven gear regulator assembly
16	Y-PG253W-16	16994	Piston pin circlip
17	Y-PG253W-17	16995	Piston pin
18	Y-PG253W-18	16997	Connecting rod
19	Y-PG253W-19	16998	Piston
20	Y-PG253W-20	16999	Diode assembly
21	Y-PG253W-21	17000	Split pin
22	Y-PG253W-22	17002	Regulating sway bar
23	Y-PG253W-23	17004	Regulating arm
24	Y-PG253W-24	17005	Bolt
25	Y-PG253W-25	17006	Speed control lever
26	Y-PG253W-26	17007	Oil alarm
27	Y-PG253W-27	17008	Crankcase side plate weldment
28	Y-PG253W-28	17009	Oil rule
29	Y-PG253W-29	17010	Fairing component
30	Y-PG253W-30	17012	Washer
31	Y-PG253W-31	17013	Cylinder head assembly
32	Y-PG253W-32	17014	Cylinder head gasket
33	Y-PG253W-33	17016	Air cleaner stay
34	Y-PG253W-34	17017	Air cleaner
35	Y-PG253W-35	17018	Air filter gasket

KEY No.	PART No.	STOCK No.	DESCRIPTION
36	Y-PG253W-36	17020	Carburettor
37	Y-PG253W-37	17021	Carburettor connecting block
38	Y-PG253W-38	17023	Inlet washer
39	Y-PG253W-39	17025	Spark plug
40	Y-PG253W-40	17027	Regulating mount
41	Y-PG253W-41	17029	Reset tension spring
42	Y-PG253W-42	17031	Exhaust pipe
43	Y-PG253W-43	17033	Intake valve
44	Y-PG253W-44	17036	Exhaust valve
45	Y-PG253W-45	17037	Valve spring
46	Y-PG253W-46	17040	Cap
47	Y-PG253W-47	17041	Valve rocker assembly
48	Y-PG253W-48	17042	Pusher assembly
49	Y-PG253W-49	17044	Pusher
50	Y-PG253W-50	17045	Cylinder head cover gasket
51	Y-PG253W-51	17046	Cylinder head cover assembly
52	Y-PG253W-52	17047	Fuel tank assembly
52-2	Y-PG253W-52-2	17048	Fuel tank cover
52-3	Y-PG253W-52-3	17050	Filter
53	Y-PG253W-53	17053	Rubber tubing set
54	Y-PG253W-54	17054	Oil switch
55	Y-PG253W-55	17055	Oil pipe clamps
56	Y-PG253W-56	17059	Oil pipe
57	Y-PG253W-57	17062	Intake valve spring seat
58	Y-PG253W-58	17063	Frame assembly
59	Y-PG253W-59	17064	Frame support
60	Y-PG253W-60	17065	Carburettor gasket
61	Y-PG253W-61	17067	Gasket
62	Y-PG253W-62	17068	Rubber pad
63	Y-PG253W-63	17070	Nut
64	Y-PG253W-64	17071	Shock mount A and B
65	Y-PG253W-65	17072	Muffler back block
66-1	Y-PG253W-66-1	17073	Panel body
66-2	Y-PG253W-66-2	17074	Off switch
66-3	Y-PG253W-66-3	17075	Voltage meter

**Helpline: (023) 8049 4344. Sales Desk: (023) 8049 4333. General Enquiries: (023) 8026 6355.**

DRAPER TOOLS LTD, HURSLEY ROAD, CHANDLER'S FORD, EASTLEIGH, HANTS. SO53 1YF. U.K website: drapertools.com e-mail: sales@drapertools.com



SPARE PARTS LISTING SHEET FOR  
**2.2kVA/2.0kW**  
**Petrol Generator**

Stock No. 16066

Part No. PG253W

KEY No.	PART No.	STOCK No.	DESCRIPTION
66-4	Y-PG253W-66-4	17078	AC breaker
66-5	Y-PG253W-66-5	17079	Ground stud
66-6	Y-PG253W-66-6	17080	Socket
66-7	Y-PG253W-66-7	17081	Off switch waterproof cover
66-8	Y-PG253W-66-8	17082	AC breaker waterproof cover
67	Y-PG253W-67	17083	Muffler cover assembly
68	Y-PG253W-68	17084	Muffler assembly
69	Y-PG253W-69	17086	Muffler mounting support a
70	Y-PG253W-70	17087	Muffler mounting support b
71	Y-PG253W-71	17089	Bearing support
72	Y-PG253W-72	17090	Wind block
73	Y-PG253W-73	17091	Alternator assembly
73-1	Y-PG253W-73-1	17092	Carbon brush
74	Y-PG253W-74	17094	AVR
75	Y-PG253W-75	17095	End cover
76	Y-PG253W-76	17096	Piston ring kit
77	Y-PG253W-77	17097	Bolt
78	Y-PG253W-78	17098	Bolt
79	Y-PG253W-79	17099	Bolt
80	Y-PG253W-80	17101	Bolt
81	Y-PG253W-81	17102	Bolt
82	Y-PG253W-82	17103	Nut
83	Y-PG253W-83	17104	Bolt
84	Y-PG253W-84	17105	Bolt
85	Y-PG253W-85	17106	Bolt

KEY No.	PART No.	STOCK No.	DESCRIPTION
86	Y-PG253W-86	17107	Exhaust oil block cover
87	Y-PG253W-87	17108	Bolt
88	Y-PG253W-88	17109	Nut
89	Y-PG253W-89	17112	Bolt
90	Y-PG253W-90	17113	Washer
91	Y-PG253W-91	17114	Bolt
92	Y-PG253W-92	17115	Bolt
93	Y-PG253W-93	17116	Bolt
94	Y-PG253W-94	17119	Exhaust valve spring seat
95	Y-PG253W-95	17120	Bolt
96	Y-PG253W-96	17121	Bolt
97	Y-PG253W-97	17122	Rotor bolt
98	Y-PG253W-98	17123	Nut
99	Y-PG253W-99	17124	Nut
100	Y-PG253W-100	17127	Nut
101	Y-PG253W-101	17128	Nut
102	Y-PG253W-102	17130	Washer
103	Y-PG253W-103	17131	Washer
104	Y-PG253W-104	17133	Washer
105	Y-PG253W-105	17136	Washer
106	Y-PG253W-106	17137	Washer
107	Y-PG253W-107	17138	Washer
108	Y-PG253W-108	17139	Crankcase pin
109	Y-PG253W-109	17140	Cylinder head set pin

**Helpline: (023) 8049 4344. Sales Desk: (023) 8049 4333. General Enquiries: (023) 8026 6355.**

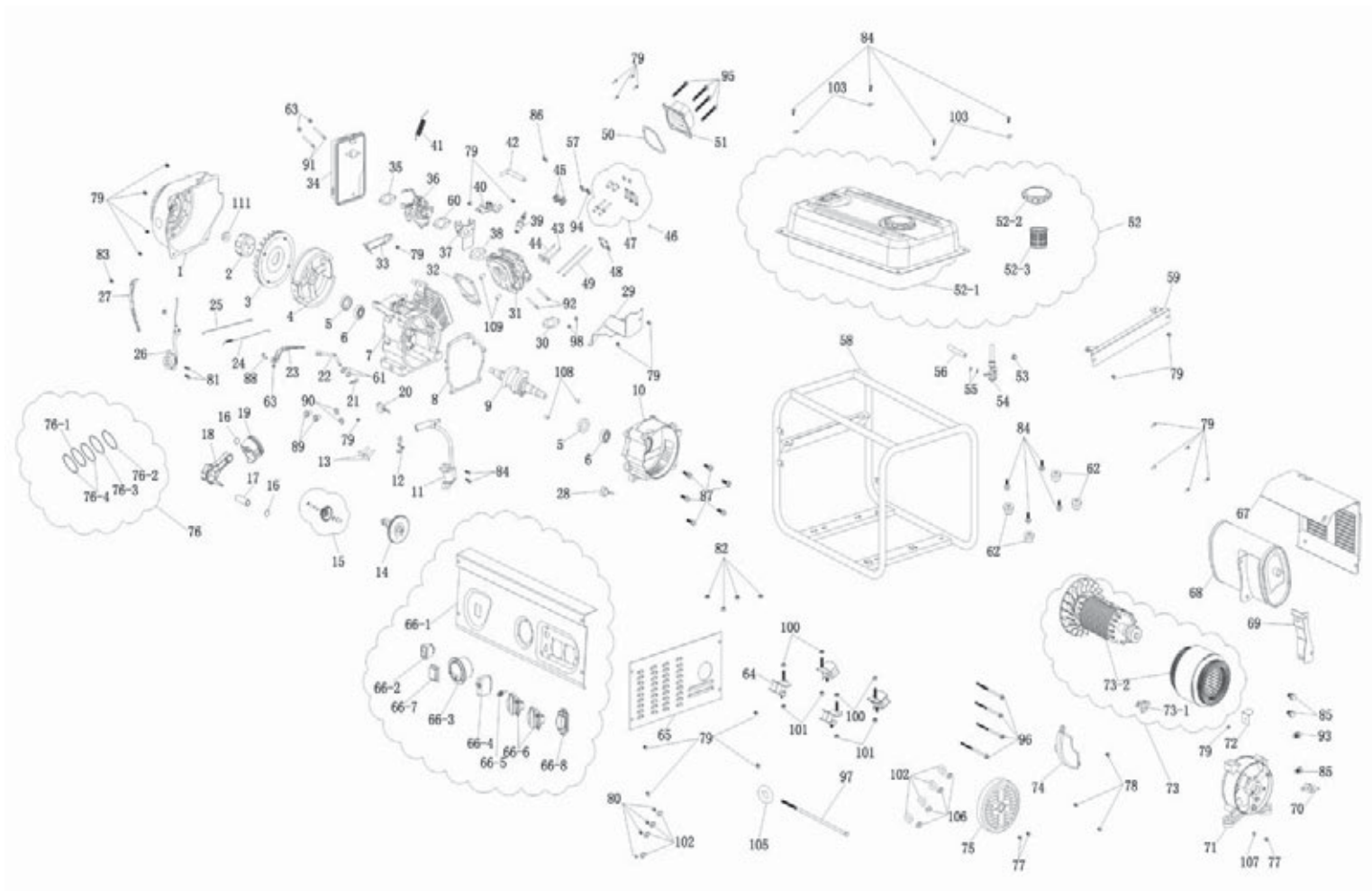
DRAPER TOOLS LTD, HURSLEY ROAD, CHANDLER'S FORD, EASTLEIGH, HANTS. SO53 1YF. U.K website: drapertools.com e-mail: sales@drapertools.com



SPARE PARTS DRAWING SHEET FOR  
**2.2kVA/2.0kW**  
**Petrol Generator**

Stock No.16066

Part No.PG253W



**Helpline:** (023) 8049 4344. **Sales Desk:** (023) 8049 4333. **General Enquiries:** (023) 8026 6355.

DRAPER TOOLS LTD, HURSLEY ROAD, CHANDLER'S FORD, EASTLEIGH, HANTS. SO53 1YF. U.K website: drapertools.com e-mail: sales@drapertools.com