



SPARE PARTS LISTING SHEET FOR

750L/min 7HP Petrol Trash Water Pump

Stock No.16128

Part No.PWP82T

KEY No.	PART No.	STOCK No.	DESCRIPTION
1	Y-PWP82T-01	16128	Oil plug complete
4	Y-PWP82T-04	16842	Crankcase cover
5	Y-PWP82T-05	16843	Bearing 6205
6	Y-PWP82T-06	16844	Crankcase gasket
7	Y-PWP82T-07	16845	Set pin 8x14
8	Y-PWP82T-08	16846	Dipstick
10	Y-PWP82T-10	16847	Crankshaft oil seal
11	Y-PWP82T-11	16848	Bolt M8x32
12	Y-PWP82T-12	16849	Piston ring set
13	Y-PWP82T-13	16850	Piston pin circlip
14	Y-PWP82T-14	16852	Piston
15	Y-PWP82T-15	16853	Piston pin
16	Y-PWP82T-16	16854	Connecting rod
17	Y-PWP82T-17	16855	Crankshaft
18	Y-PWP82T-18	16856	Drain plug
19	Y-PWP82T-19	16857	Washer
20	Y-PWP82T-05	16843	Bearing 6205
21	Y-PWP82T-21	16858	Crankshaft oil seal
22	Y-PWP82T-22	16859	Crankcase
23	Y-PWP82T-23	16860	Sway bar
24	Y-PWP82T-24	16861	Washer
25	Y-PWP82T-25	16862	Keeper
26	Y-PWP82T-26	16863	Oil sensor
27	Y-PWP82T-27	16864	Bolt M6x14
28	Y-PWP82T-28	16865	Driven gear and governor
29	Y-PWP82T-29	16866	Valve rocker assembly
30	Y-PWP82T-30	16867	Lock nut
31	Y-PWP82T-31	16869	Rocker shaft seat
32	Y-PWP82T-32	16870	Valve rocker
33	Y-PWP82T-33	16871	Valve gap adjusting bolt
34	Y-PWP82T-34	16872	Pusher guide
35	Y-PWP82T-35	16873	Pusher
36	Y-PWP82T-36	16874	Tappet
37	Y-PWP82T-37	16875	Camshaft assembly
38	Y-PWP82T-38	16876	Exhaust valve

KEY No.	PART No.	STOCK No.	DESCRIPTION
39	Y-PWP82T-39	16878	Intake valve
40	Y-PWP82T-40	16879	Valve spring
41	Y-PWP82T-41	16880	Intake valve spring seat
42	Y-PWP82T-42	16882	Exhaust valve spring seat
43	Y-PWP82T-43	16883	Exhaust valve cap
44	Y-PWP82T-44	16884	Muffler
45	Y-PWP82T-45	16885	Muffler hood
46	Y-PWP82T-46	16886	Screw M5x8
47	Y-PWP82T-47	16887	Washer 8
48	Y-PWP82T-48	16888	Exhaust port gasket
49	Y-PWP82T-49	16889	Washer 5
51	Y-PWP82T-51	16890	Net M8
52	Y-PWP82T-52	16891	Bolt m6x12
53	Y-PWP82T-53	16892	Lower flow guard
54	Y-PWP82T-54	16894	Stud M6x1 13
55	Y-PWP82T-55	16895	Set pin 10x16
56	Y-PWP82T-56	16896	Cylinder head gasket
57	Y-PWP82T-57	16897	Cylinder head assembly
58	Y-PWP82T-58	16898	Stud M8x34
59	Y-PWP82T-59	16899	Spark plug
60	Y-PWP82T-60	16900	Cylinder head bolt
61	Y-PWP82T-61	16901	Cylinder head cover gasket
62	Y-PWP82T-62	16902	Cylinder head cover sub assembly
63	Y-PWP82T-63	16903	Bolt M6x12
64	Y-PWP82T-64	16905	Wing nut
65	Y-PWP82T-65	16907	Filter element
66	Y-PWP82T-66	16908	Washer
67	Y-PWP82T-67	16909	Nut M6
68	Y-PWP82T-68	16910	Air cleaner housing
72	Y-PWP82T-72	16911	Governor mount
73	Y-PWP82T-73	16913	Back spring
74	Y-PWP82T-74	16914	Governor assistant spring
75	Y-PWP82T-75	16915	Pulling rod
76	Y-PWP82T-76	16916	Lock bolt
77	Y-PWP82T-77	16917	Nut M6

Helpline: (023) 8049 4344. Sales Desk: (023) 8049 4333. General Enquiries: (023) 8026 6355.

DRAPER TOOLS LTD, HURSLEY ROAD, CHANDLER'S FORD, EASTLEIGH, HANTS. SO53 1YF. U.K website: drapertools.com e-mail: sales@drapertools.com



SPARE PARTS LISTING SHEET FOR

750L/min 7HP Petrol Trash Water Pump

Stock No.16128

Part No.PWP82T

KEY No.	PART No.	STOCK No.	DESCRIPTION
78	Y-PWP82T-78	16918	Governor arm
79	Y-PWP82T-79	16919	Intake port gasket
80	Y-PWP82T-80	16921	Connecting block
81	Y-PWP82T-81	16923	Carburettor gasket
82	Y-PWP82T-82	16924	Air cleaner gasket
83	Y-PWP82T-83	16925	Carburettor assembly
84	Y-PWP82T-84	16926	Flywheel unit
85	Y-PWP82T-85	16928	Flywheel fan
86	Y-PWP82T-86	16929	Starting flange
87	Y-PWP82T-87	16930	Nut
88	Y-PWP82T-88	16931	Ignition coil unit
89	Y-PWP82T-89	16932	Bolt M6x12
90	Y-PWP82T-90	16933	Fan hood assembly
91	Y-PWP82T-91	16934	Plastic clip
92	Y-PWP82T-92	16936	Unilateral conductor
93	Y-PWP82T-93	16937	Ignition switch
94	Y-PWP82T-94	16939	Crankcase side plate assembly
95	Y-PWP82T-95	16940	Bolt M6x12
96	Y-PWP82T-96	16941	Recoil starter
97	Y-PWP82T-97	16942	Bolt M6x8
98	Y-PWP82T-98	16943	Recoil starter assembly
99	Y-PWP82T-99	16944	Pipe clamp
100	Y-PWP82T-100	16945	Outlet pipe
101	Y-PWP82T-101	16947	Bolt M6x25
102	Y-PWP82T-102	16948	Outlet nipple
103	Y-PWP82T-103	16949	Packing ring

KEY No.	PART No.	STOCK No.	DESCRIPTION
104	Y-PWP82T-104	16950	Nut M6
105	Y-PWP82T-105	16951	Fuel filler cap assembly
107	Y-PWP82T-107	16952	Fuel tank
108	Y-PWP82T-108	16953	Frame assembly
109	Y-PWP82T-109	16955	Nut M6
110	Y-PWP82T-110	16956	Seal ring
111	Y-PWP82T-111	16957	Bolt M6x14
113	Y-PWP82T-113	16958	Pump side cover
114	Y-PWP82T-114	16959	Seal ring
115	Y-PWP82T-115	16960	Washer
116	Y-PWP82T-116	16961	Bolt
117	Y-PWP82T-117	16962	Spiral case seal ring
118	Y-PWP82T-118	16963	Turbine
119	Y-PWP82T-119	16965	Turbine seal ring
120	Y-PWP82T-120	16966	Turbine cover
121	Y-PWP82T-121	16967	Pump body
122	Y-PWP82T-122	16968	Pump cover
123	Y-PWP82T-123	16969	Inlet seal ring
124	Y-PWP82T-124	16971	Connector
125	Y-PWP82T-125	16972	Nut
126	Y-PWP82T-126	22601	Hose clamp
127	Y-PWP82T-127	16973	Nut wrench
128	Y-PWP82T-128	16974	Drain plug seal ring
129	Y-PWP82T-129	16975	Drain plug
130	Y-PWP82T-130	16976	Filter complete

Helpline: (023) 8049 4344. Sales Desk: (023) 8049 4333. General Enquiries: (023) 8026 6355.

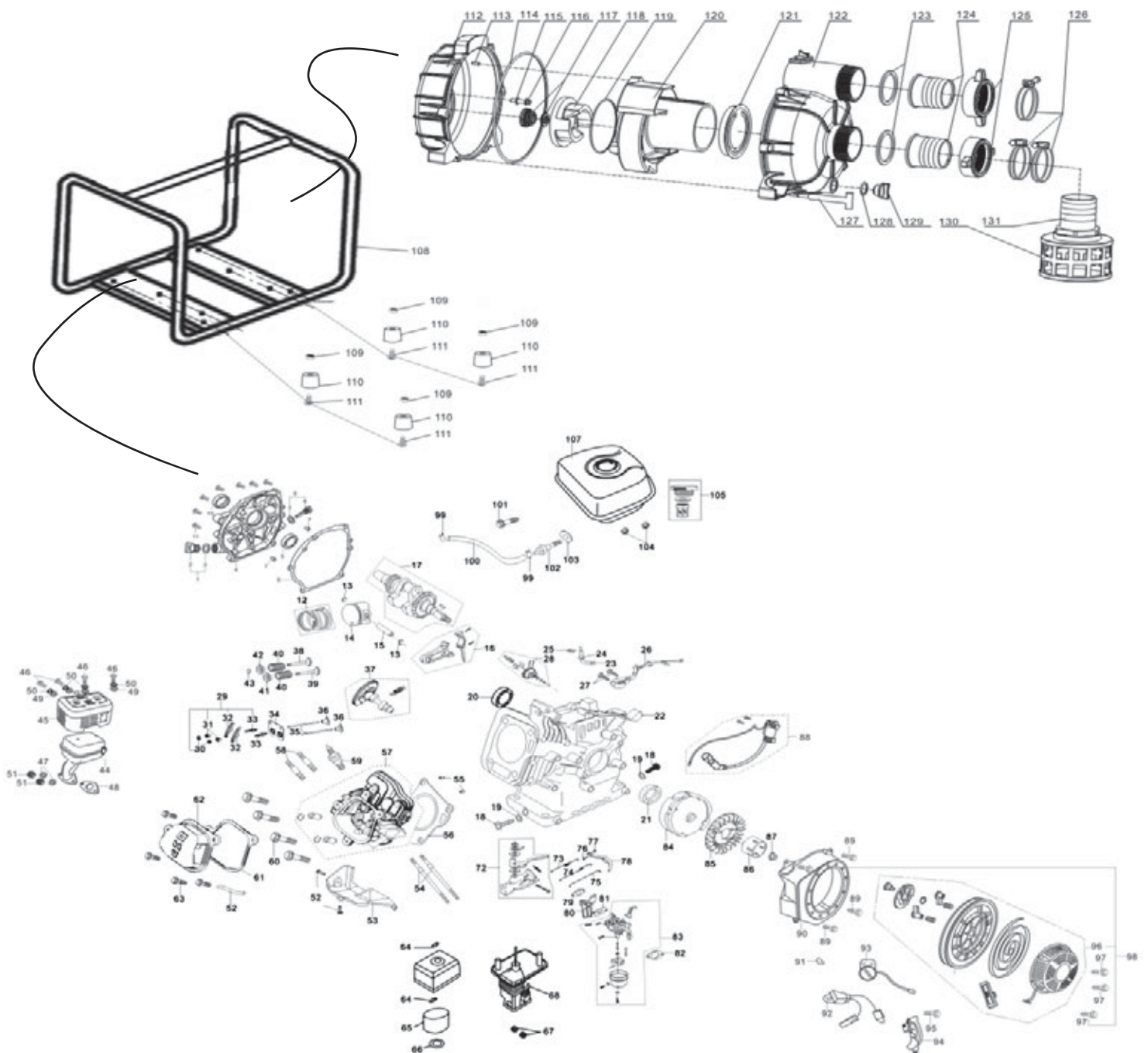
DRAPER TOOLS LTD, HURSLEY ROAD, CHANDLER'S FORD, EASTLEIGH, HANTS. SO53 1YF. U.K website: drapertools.com e-mail: sales@drapertools.com



SPARE PARTS DRAWING SHEET FOR
750L/min 7HP
Petrol Trash Water Pump

Stock No.16128

Part No.PWP82T



Helpline: (023) 8049 4344. **Sales Desk:** (023) 8049 4333. **General Enquiries:** (023) 8026 6355.

DRAPER TOOLS LTD, HURSLEY ROAD, CHANDLER'S FORD, EASTLEIGH, HANTS. SO53 1YF. U.K website: drapertools.com e-mail: sales@drapertools.com