

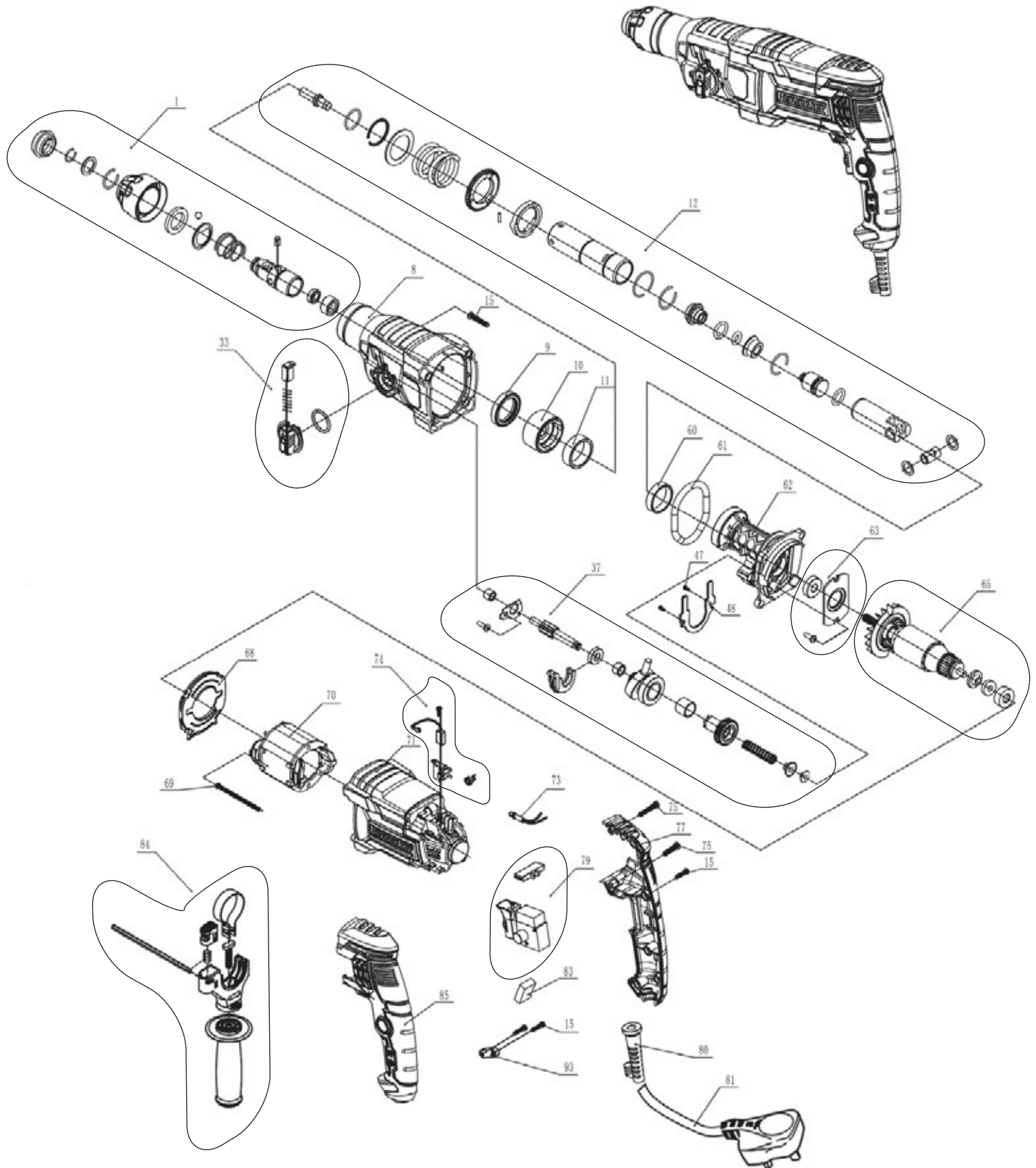
**DRAPER**<sup>®</sup>

230V 3.4KG

**GB**

# SDS+ ROTARY HAMMER DRILL

56382 - SDSHD1050D SPARE PARTS DRAWING





230V 3.4KG



# SDS+ ROTARY HAMMER DRILL

56382 - SDSHD1050D SPARE PARTS LISTING

KEY No.	PART No.	STOCK No.	DESCRIPTION	KEY No.	PART No.	STOCK No.	DESCRIPTION
1	YSDSHD1050D-1	97535	Front end assembly				
8	YSDSHD1050D-8	97542	Cylinder case				
9	YSDSHD1050D-9	97543	Oil Seal				
10	YSDSHD1050D-10	97544	Needle bearing holder				
11	YSDSHD1050D-11	97545	Needle bearing 301237				
12	YSDSHD1050D-12	97546	Cylinder assembly				
15	YSDSHD1050D-15	97549	Slotted screw ST3.9X20				
33	YSDSHD1050D-33	97567	Selector knob assembly				
37	YSDSHD1050D-37	97571	Gear assembly				
47	YSDSHD1050D-47	97581	Hex. Skt HD. bolt M5X14				
48	YSDSHD1050D-48	97582	Bearing board				
60	YSDSHD1050D-60	97594	Steel sleeve				
61	YSDSHD1050D-61	97595	Gasket				
62	YSDSHD1050D-62	97596	Aluminium stents				
63	YSDSHD1050D-63	97597	Bearing assembly				
65	YSDSHD1050D-65	97599	Rotor assembly				
68	YSDSHD1050D-68	97602	Fan Guide				
69	YSDSHD1050D-69	97603	Self-tapping Screws				
70	YSDSHD1050D-70	97604	Stator				
71	YSDSHD1050D-71	97605	Rotor housing				
73	YSDSHD1050D-73	97607	Inductance				
74	YSDSHD1050D-74	97608	Brush assembly				
75	YSDSHD1050D-75	97609	Slotted screw ST3.9X30				
77	YSDSHD1050D-77	97611	Handle cover				
79	YSDSHD1050D-79	97613	Switch assembly				
80	YSDSHD1050D-80	97614	Cable cover				
81	YSDSHD1050D-81	97615	Cable				
83	YSDSHD1050D-83	97617	Electric capacity				
84	YSDSHD1050D-84	97618	Auxiliary handle				
85	YSDSHD1050D-85	97619	Left handle				
93	YSDSHD1050D-93	97620	Cable board				

Helpline: +44 (0) 23 8049 4344 Sales Desk: +44 (0) 23 8049 4333 General Enquiries: +44 (0) 23 8026 6355 internet: drapertools.com email: sales@drapertools.com