

DRAPER[®]

SPARE PARTS LISTING SHEET FOR
**100L Twin V
 Oiled Air Compressor**

Stock No.65396

Part No.DA100/412TV

KEY No.	PART No.	STOCK No.	DESCRIPTION
1	YDA100/412TV-01	69900	Bolt
2	YDA100/412TV-02	69901	Cylinder head
3	YDA100/412TV-03	69917	Seal
4	YDA100/412TV-04	69919	Valve plate
5	YDA100/412TV-05	69925	Valve plate gasket
6	YDA100/412TV-06	69944	Valve
7	YDA100/412TV-07	69945	Piston ring
8	YDA100/412TV-08	69982	Cylinder
9	YDA100/412TV-09	69983	Cylinder gasket
10	YDA100/412TV-10	69984	Piston ring
11	YDA100/412TV-11	69986	O-ring
12	YDA100/412TV-12	69987	Piston
13	YDA100/412TV-13	69988	Pin
14	YDA100/412TV-14	69989	Circlip
15	YDA100/412TV-15	69990	Connecting rod
16	YDA100/412TV-16	69991	Rubber gasket
17	YDA100/412TV-17	69992	Dipstick
18	YDA100/412TV-18	69993	Crank case cover
19	YDA100/412TV-19	69994	Bolt
20	YDA100/412TV-20	69995	Vial
21	YDA100/412TV-21	69996	Bolt
22	YDA100/412TV-22	69997	Gasket
23	YDA100/412TV-23	69998	Crank
24	YDA100/412TV-24	69999	Bolt
25	YDA100/412TV-25	70003	Crank case
26	YDA100/412TV-26	70004	Bolt
27	YDA100/412TV-27	70009	Sealing ring
28	YDA100/412TV-28	70014	Bearing
29	YDA100/412TV-29	70015	Capacitor
30	YDA100/412TV-30	70016	Nut
31	YDA100/412TV-31	70019	Capacitor
32	YDA100/412TV-32	70032	Grille
33	YDA100/412TV-33	70342	Bolt
34	YDA100/412TV-34	70900	Connector
35	YDA100/412TV-35	71000	Pipe
36	YDA100/412TV-36	71001	Connector
37	YDA100/412TV-37	71002	Air filter
38	YDA100/412TV-38	71003	Overload switch
39	YDA100/412TV-39	71004	Bolt
40	YDA100/412TV-40	71005	Junction box
41	YDA100/412TV-41	71006	Stator
42	YDA100/412TV-42	71007	Rotor

KEY No.	PART No.	STOCK No.	DESCRIPTION
43	YDA100/412TV-43	71008	Bearing
44	YDA100/412TV-44	71009	Washer
45	YDA100/412TV-45	71037	Plate
46	YDA100/412TV-46	71038	Plate
47	YDA100/412TV-47	71039	Motor cover
48	YDA100/412TV-48	71040	Grille
49	YDA100/412TV-49	71041	Bolt
50	YDA100/412TV-50	71043	Fan
51	YDA100/412TV-51	71045	Circlip
52	YDA100/412TV-52	71046	Housing
53	YDA100/412TV-53	71048	Bolt
54	YDA100/412TV-54	71049	Nut
55	YDA100/412TV-55	71050	Fan cover
56	YDA100/412TV-56	71051	Bolt
57	YDA100/412TV-57	71052	Pipe
58	YDA100/412TV-58	71053	Nut
59	YDA100/412TV-59	71054	Pipe
60	YDA100/412TV-60	71055	Bolt
61	YDA100/412TV-61	71056	One-way valve
62	YDA100/412TV-62	71057	Axle
63	YDA100/412TV-63	71058	Wheel
64	YDA100/412TV-64	71060	Bung
65	YDA100/412TV-65	71061	Nut
66	YDA100/412TV-66	71062	Gasket
67	YDA100/412TV-67	71063	Drain bung
68	YDA100/412TV-68	71064	Bolt
69	YDA100/412TV-69	71065	Rubber mat
70	YDA100/412TV-70	71066	Nut
71	YDA100/412TV-71	71067	Nut
72	YDA100/412TV-72	71068	Connector
73	YDA100/412TV-73	71118	Safety valve
74	YDA100/412TV-74	71119	Air line connector
75	YDA100/412TV-75	71120	Pressure gauge
76	YDA100/412TV-76	71121	Pressure switch
77	YDA100/412TV-77	71122	Plug and cable
78	YDA100/412TV-78	71178	Handle sleeve
79	YDA100/412TV-79	71193	Tank
80	YDA100/412TV-80	71196	Cable
81	YDA100/412TV-81	71206	Handle
82	YDA100/412TV-82	71207	Bolt
83	YDA100/412TV-83	71221	Wheel set

Helpline: (023) 8049 4344. Sales Desk: (023) 8049 4333. General Enquiries: (023) 8026 6355.

DRAPER TOOLS LTD, HURSLEY ROAD, CHANDLER'S FORD, EASTLEIGH, HANTS. SO53 1YF. U.K website: www.drapertools.com e-mail: sales@drapertools.com

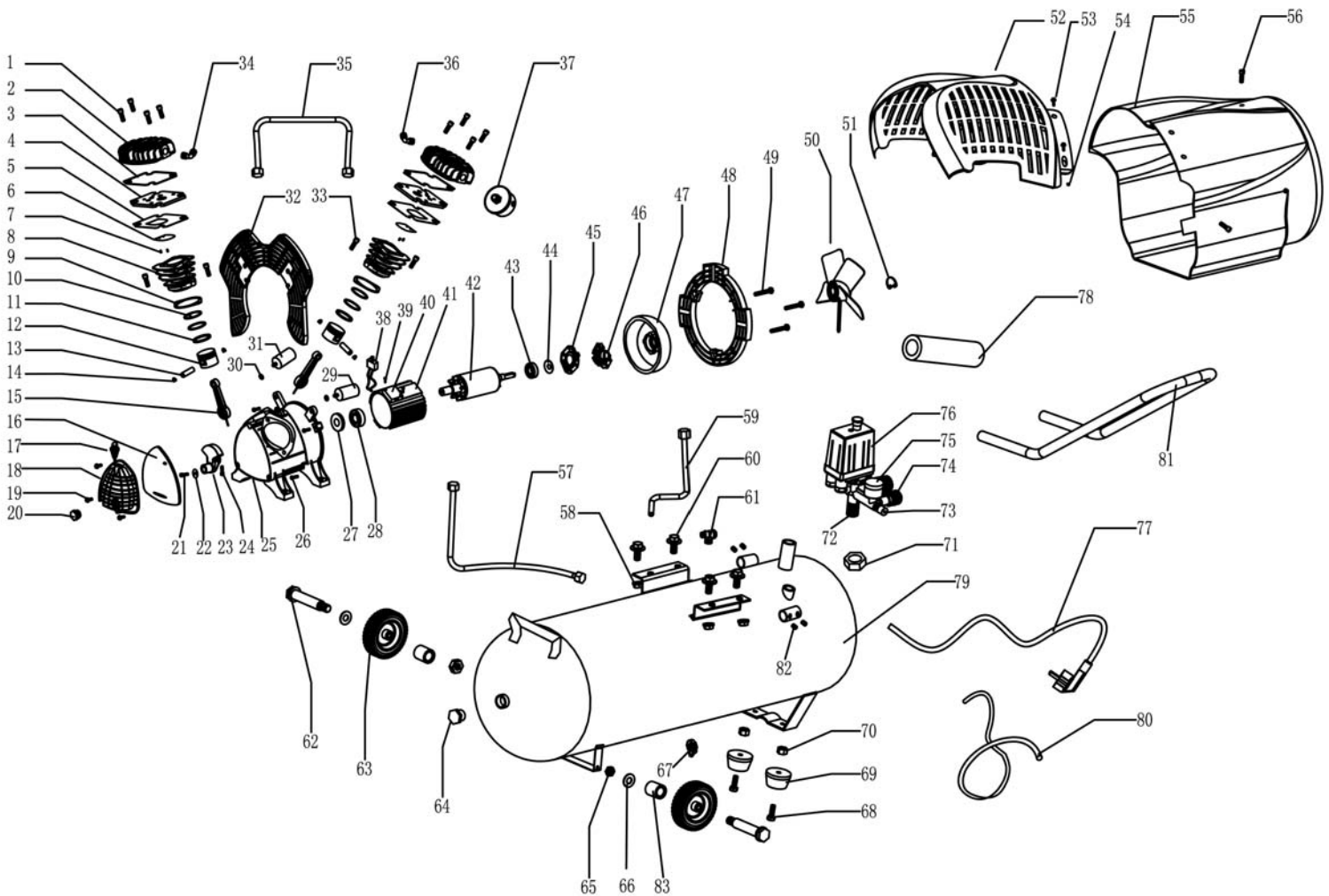


SPARE PARTS DRAWING SHEET FOR

100L Twin V Oiled Air Compressor

Stock No.65396

Part No.DA100/412TV



Helpline: (023) 8049 4344. Sales Desk: (023) 8049 4333. General Enquiries: (023) 8026 6355.

DRAPER TOOLS LTD, HURSLEY ROAD, CHANDLER'S FORD, EASTLEIGH, HANTS. SO53 1YF. U.K website: www.drapertools.com e-mail: sales@drapertools.com

RWJP021214