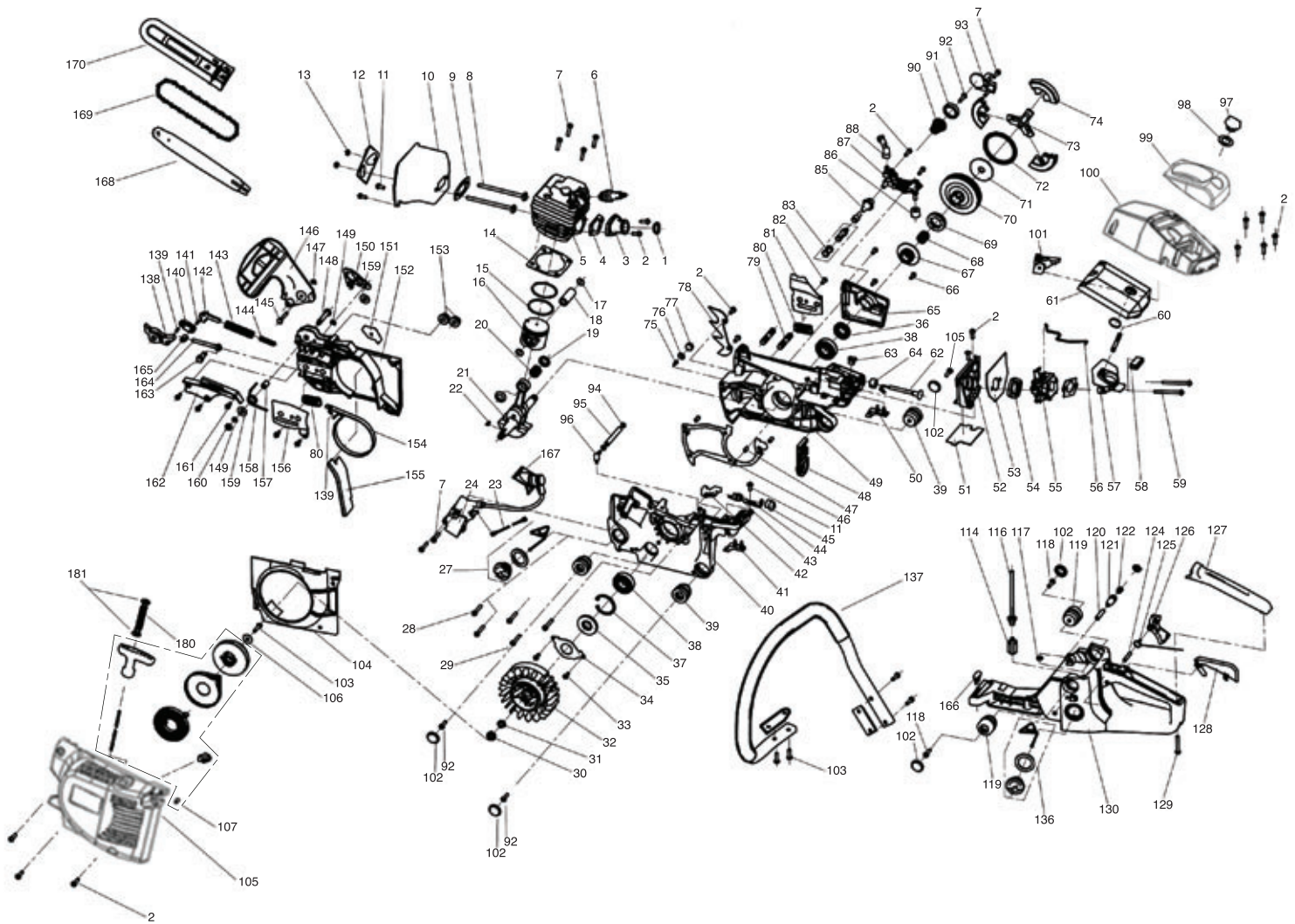


PETROL CHAINSAW

80106 - CSP5250 SPARE PARTS DRAWING





PETROL CHAINSAW

80106 - CSP5250 SPARE PARTS LISTING

KEY No.	PART No.	STOCK No.	DESCRIPTION
01	Y-CSP4546-01	90952	Carburettor eyelet
02	Y-CSP4546-02	90953	Screw TX M5X14
03	Y-CSP4546-03	90954	Intake boot
04	Y-CSP4546-04	90955	Intake gasket
05	Y-CSP5250-05	91654	Cylinder
06	Y-CSP4546-06	90957	Spark plug
07	Y-CSP4546-07	90958	Screw TX M5X20
08	Y-CSP4546-08	90959	Muffler bolt M5X87
09	Y-CSP4546-09	90960	Muffler gasket
10	Y-CSP4546-10	90961	Muffler
11	Y-CSP4546-11	90963	Screw TX M5X10
12	Y-CSP4546-12	90964	Muffler shield
13	Y-CSP4546-13	90969	Nut M5
14	Y-CSP4546-14	90971	Cylinder gasket
15	Y-CSP5250-15	91657	Piston ring
16	Y-CSP5250-16	91664	Piston ring
17	Y-CSP5250-17	91666	Snap ring D11
18	Y-CSP5250-18	91676	Piston pin D11X34
19	Y-CSP4546-19	90979	Piston spacer washer
20	Y-CSP4546-20	90981	Conrod needle bearing
21	Y-CSP4546-21	90983	Conrod crankshaft assembly
22	Y-CSP4546-22	90985	Flywheel key
23	Y-CSP4546-23	90986	Switch wire
24	Y-CSP4546-24	91010	Electronic ignition
27	Y-CSP4546-27	91011	Oil cap complete
28	Y-CSP4546-28	91014	Screw TX M5X25
29	Y-CSP4546-29	91020	Screw TX M5X30
30	Y-CSP4546-30	91021	Nut M8X1
31	Y-CSP4546-31	91022	Washer 8
32	Y-CSP4546-32	91025	Fly wheel assembly
33	Y-CSP4546-33	91028	Screw TX M4X6
34	Y-CSP4546-34	91029	Plate
35	Y-CSP4546-35	91030	Oil seal 15X35X4.5
36	Y-CSP4546-36	91033	Oil seal 15X28X4.5
37	Y-CSP4546-37	91034	Snap ring D35
38	Y-CSP4546-38	91035	Ball bearing 35-15
39	Y-CSP4546-39	91036	Rubber cushioning pad (lower)
40	Y-CSP4546-40	91037	Left crank
41	Y-CSP4546-41	91038	Rubber bumper (rear left)
42	Y-CSP4546-42	91039	Outer grommet
43	Y-CSP4546-43	91040	Stop switch
44	Y-CSP4546-44	91041	Switch retainer
45	Y-CSP4546-45	91042	Rubber grommet (switch)
46	Y-CSP4546-46	91044	Crank case gasket
47	Y-CSP4546-47	91045	Pin D6
48	Y-CSP4546-48	91046	Rubber gasket
49	Y-CSP4546-49	91047	Right crank
50	Y-CSP4546-50	91072	Rubber bumper (rear right)
51	Y-CSP4546-51	91073	Carburettor support gasket
52	Y-CSP4546-52	91083	Carburettor support

KEY No.	PART No.	STOCK No.	DESCRIPTION
53	Y-CSP4546-53	91084	Carburettor gasket
54	Y-CSP4546-54	91085	Carburettor flange
55	Y-CSP4546-55	91086	Carburettor
56	Y-CSP4546-56	91087	Throttle rod
57	Y-CSP4546-57	91088	Inner grommet
58	Y-CSP4546-58	91089	Rubber cap
59	Y-CSP4546-59	91090	Screw M5X50
60	Y-CSP4546-60	91091	Stud bar
61	Y-CSP4546-61	91094	Air filter
62	Y-CSP4546-62	91095	Choke knob
63	Y-CSP4546-63	91096	Choke knob
64	Y-CSP4546-64	91097	Air filter cover
65	Y-CSP4546-65	91098	Oil pump cover
66	Y-CSP4546-66	91101	Screw M4X12
67	Y-CSP4546-67	91102	Worm gear
68	Y-CSP4546-68	91104	Needle bearing
69	Y-CSP4546-69	91105	Sprocket
70	Y-CSP4546-70	91108	Clutch drum
71	Y-CSP4546-71	91109	Clutch washer
72	Y-CSP4546-72	91110	Clutch spring
73	Y-CSP4546-73	91111	Preserve support
74	Y-CSP4546-74	91112	Clutch assembly
75	Y-CSP4546-75	91113	Aerate spigot
76	Y-CSP4546-76	91114	Aerate spigot snap ring
77	Y-CSP4546-77	91115	Aerate spigot sponge
78	Y-CSP4546-78	91116	Spike
79	Y-CSP4546-79	91117	Stud bar
80	Y-CSP4546-80	91119	Bar pad
81	Y-CSP4546-81	91120	Bar plate
82	Y-CSP4546-82	91121	Screw M4X10
83	Y-CSP4546-83	91123	Filter vent
84	Y-CSP4546-84	91124	Oil filter
85	Y-CSP4546-85	91125	Oil hose
86	Y-CSP4546-86	91126	Foam seal
87	Y-CSP4546-87	91127	Oil pump cover
88	Y-CSP4546-88	91128	Oil outlet connector
89	Y-CSP4546-89	91129	Screw M4X12
90	Y-CSP4546-90	91130	Damping spring
91	Y-CSP4546-91	91131	Plastic ring
92	Y-CSP4546-92	91135	Screw ST4.8X16
93	Y-CSP4546-93	91137	Chain catcher
94	Y-CSP4546-94	91138	Hose snap ring
95	Y-CSP4546-95	91139	Hose assembly
97	Y-CSP4546-97	91140	Air filter knob
98	Y-CSP4546-98	91141	Knob gasket
99	Y-CSP5250-99	91677	Air filter cover
100	Y-CSP5250-100	91678	Top cover
101	Y-CSP4546-101	91212	Idle adjustment sheath
102	Y-CSP4546-102	91213	Pad plug
103	Y-CSP4546-103	91223	Screw ST4.8X12

Helpline: +44 (0) 23 8049 4344 Sales Desk: +44 (0) 23 8049 4333 General Enquiries: +44 (0) 23 8026 6355 internet: drapertools.com email: sales@drapertools.com



PETROL CHAINSAW

80106 - CSP5250 SPARE PARTS LISTING

KEY No.	PART No.	STOCK No.	DESCRIPTION
104	Y-CSP4546-104	91224	Fan baffle
105	Y-CSP4546-105	91232	Jacket
106	Y-CSP4546-106	91240	Washer D5.5/16
107	Y-CSP5250-107	91681	Starter assembly
114	Y-CSP4546-114	91246	Oil filter
115	Y-CSP4546-115	91248	Metal plate
116	Y-CSP4546-116	91249	Fuel hose
117	Y-CSP4546-117	91522	Bung
118	Y-CSP4546-118	91253	Bolt
119	Y-CSP4546-119	91254	Rubber cushioning pad (lower)
120	Y-CSP4546-120	91255	Oil hose ballancer
121	Y-CSP4546-121	91258	Ballancer upper
122	Y-CSP4546-122	91266	Valve vent
123	Y-CSP4546-123	91267	Ballancer lower
124	Y-CSP4546-124	91268	Pin
125	Y-CSP4546-125	91269	Trigger spring
126	Y-CSP4546-126	91270	Trigger
127	Y-CSP4546-127	91271	Rear handle cover
128	Y-CSP4546-128	91272	Trigger safety lever
129	Y-CSP4546-129	91276	Screw ST5X19
130	Y-CSP4546-130	91277	Tank assembly
131	Y-CSP4546-131	91278	Trigger latch
132	Y-CSP4546-132	91279	Throttle advance spring
133	Y-CSP4546-133	91312	Throttle advance button
136	Y-CSP4546-136	91328	Oil cap complete
137	Y-CSP4546-137	91355	Front handle
138	Y-CSP4546-138	91358	Main chain brake lever
139	Y-CSP4546-139	91361	Pin 3X9
140	Y-CSP4546-140	91363	Assistant brake lever
141	Y-CSP4546-141	91366	Pin 3X8
142	Y-CSP4546-142	91367	Brake plate
143	Y-CSP4546-143	91372	Actuation spring
144	Y-CSP4546-144	91374	Actuation spring
145	Y-CSP4546-145	91375	Pin
146	Y-CSP4546-146	91377	Chain brake lever
147	Y-CSP4546-147	91382	Snap ring 3
148	Y-CSP4546-148	91383	Lever pin
149	Y-CSP4546-149	91384	Snap ring 4
150	Y-CSP4546-150	91387	Brake plate
151	Y-CSP4546-151	91388	Rubber bumper
152	Y-CSP4546-152	91389	Brake housing
153	Y-CSP4546-153	91390	Nut M8
154	Y-CSP4546-154	91392	Brake band
155	Y-CSP4546-155	91393	Rubber strap
156	Y-CSP4546-156	91396	Bar plate
157	Y-CSP4546-157	91398	Bushing
158	Y-CSP4546-158	91406	Brake lever spring
159	Y-CSP4546-159	91407	Carb support gasket
160	Y-CSP4546-160	91409	Rubber washer
161	Y-CSP4546-161	91417	Screw ST4.2X9.5

KEY No.	PART No.	STOCK No.	DESCRIPTION
162	Y-CSP4546-162	91418	Brake cover
163	Y-CSP4546-163	91420	Chain adjusting sprocket
164	Y-CSP4546-164	91424	Chain adjusting screw
165	Y-CSP4546-165	91425	Chain adjusting tooth
166	Y-CSP4546-166	91428	Rubber bumper (front)
168	Y-CSP5250-168	91682	Guide bar 20"
169	Y-CSP5250-169	91685	Saw chain 20"
170	Y-CSP5250-170	91687	Bar protector 20"

Helpline: +44 (0) 23 8049 4344 Sales Desk: +44 (0) 23 8049 4333 General Enquiries: +44 (0) 23 8026 6355 internet: drapertools.com email: sales@drapertools.com