



**SPARE PARTS LISTING SHEET FOR**

# 1050W 230V SDS Max Breaker

**Stock No.81077**

**Part No.PHD1050MAX**

KEY No.	PART No.	STOCK No.	DESCRIPTION
1	YPHD1050SDS-01	61842	Front cover.
2	YPHD1050SDS-02	61863	Clip ring.
3	YPHD1050SDS-03	61871	Steel ball rack.
4	YPHD1050SDS-04	61872	Steel ball rack spring.
5	YPHD1050SDS-05	61877	Screw M8 x 30.
6	YPHD1050SDS-06	61885	Spring washer.
7	YPHD1050SDS-07	61886	Washer.
8	YPHD1050SDS-08	61993	Lock sleeve.
9	YPHD1050SDS-09	62022	Clip ring.
10	YPHD1050SDS-10	62023	Clip ring.
11	YPHD1050SDS-11	62024	O ring.
12	YPHD1050SDS-12	62025	Steel ball.
13	YPHD1050SDS-13	62027	Rotary sleeve.
14	YPHD1050SDS-14	62028	O ring.
15	YPHD1050SDS-15	62029	Impact hammer.
16	YPHD1050SDS-16	62030	O ring.
17	YPHD1050SDS-17	62034	Cylinder sleeve.
18	YPHD1050SDS-18	62038	Rubber washer.
19	YPHD1050SDS-19	62040	Spring washer.
20	YPHD1050SDS-20	62042	Cylinder.
21	YPHD1050SDS-21	62044	Screw M6 x 40.
22	YPHD1050SDS-22	62045	Spring washer.
23	YPHD1050SDS-23	62046	Flat washer.
24	YPHD1050SDS-24	62048	Front placket.
25	YPHD1050SDS-25	62049	Washer.
26	YPHD1050SDS-26	62050	Cylinder hammer.
27	YPHD1050SDS-27	62070	O ring.
28	YPHD1050SDS-28	62071	Piston.
29	YPHD1050SDS-29	62129	Piston wash.
30	YPHD1050SDS-30	62130	Washer.
31	YPHD1050SDS-31	62135	Connecting rod.
32	YPHD1050SDS-32	62141	Oil cover.
33	YPHD1050SDS-33	62142	O ring.

KEY No.	PART No.	STOCK No.	DESCRIPTION
34	YPHD1050SDS-34	62263	Needle bearing.
35	YPHD1050SDS-35	62330	Eccentric shaft.
36	YPHD1050SDS-36	62399	Key.
37	YPHD1050SDS-37	62413	Clip ring.
38	YPHD1050SDS-38	62633	Bearing.
39	YPHD1050SDS-39	62689	Oil seal.
40	YPHD1050SDS-40	62716	Gearbox.
41	YPHD1050SDS-41	62719	Big gear.
42	YPHD1050SDS-42	62720	Clip ring.
43	YPHD1050SDS-43	62776	Bearing.
44	YPHD1050SDS-44	62777	Middle cover wash.
45	YPHD1050SDS-45	62780	Middle shaft.
46	YPHD1050SDS-46	62781	Bearing.
47	YPHD1050SDS-47	62782	Wash.
48	YPHD1050SDS-48	62783	Rotor.
49	YPHD1050SDS-49	62784	Bearing.
50	YPHD1050SDS-50	62785	Screw.
51	YPHD1050SDS-51	62786	Stator.
52	YPHD1050SDS-52	62787	Housing.
53	YPHD1050SDS-53	62787	Screw.
54	YPHD1050SDS-54	62797	Back cover.
55	YPHD1050SDS-55	62799	Screw.
56	YPHD1050SDS-56	62801	Brush holder shelf.
57	YPHD1050SDS-57	62805	Spring.
58	YPHD1050SDS-58	62806	Screw.
59	YPHD1050SDS-59	62807	Carbon brush.
60	YPHD1050SDS-60	62808	Spring washer.
61	YPHD1050SDS-61	62809	Flat washer.
62	YPHD1050SDS-62	62810	Anti vibration spring.
63	YPHD1050SDS-63	62812	Anti vibration washer.
64	YPHD1050SDS-64	62813	Anti vibration screw.
65	YPHD1050SDS-65	62816	Anti vibration rubber cover.
66	YPHD1050SDS-66	62817	Screw.

**Help line:(023) 8049 4344. Sales Desk: (023) 8049 4333. General Enquiries: (023) 8026 6355.**



SPARE PARTS LISTING SHEET FOR

# 1050W 230V SDS Max Breaker

Stock No.81077

Part No.PHD1050MAX

KEY No.	PART No.	STOCK No.	DESCRIPTION
67	YPHD1050SDS-67	62818	Right handle.
68	YPHD1050SDS-68	62819	Switch.
69	YPHD1050SDS-69	62820	Dustproof switch cover.
70	YPHD1050SDS-70	62821	Capacitor.
71	YPHD1050SDS-71	62822	Left handle.
72	YPHD1050SDS-72	62823	Cable fixing plate.
73	YPHD1050SDS-73	62824	Screw.
74	YPHD1050SDS-74	62826	Cord sheath.

KEY No.	PART No.	STOCK No.	DESCRIPTION
75	YPHD1050SDS-75	62827	Cord.
76	YPHD1050SDS-76	62829	Side handle hoop.
77	YPHD1050SDS-77	62830	Auxiliary handle clamp block.
78	YPHD1050SDS-78	62831	Screw.
79	YPHD1050SDS-79	62832	Auxiliary handle support hold.
80	YPHD1050SDS-80	62833	Washer.
81	YPHD1050SDS-81	62834	Auxiliary handle.
82	YPHD1050SDS-82	62835	Distance set.

**Help line:(023) 8049 4344. Sales Desk: (023) 8049 4333. General Enquiries: (023) 8026 6355.**

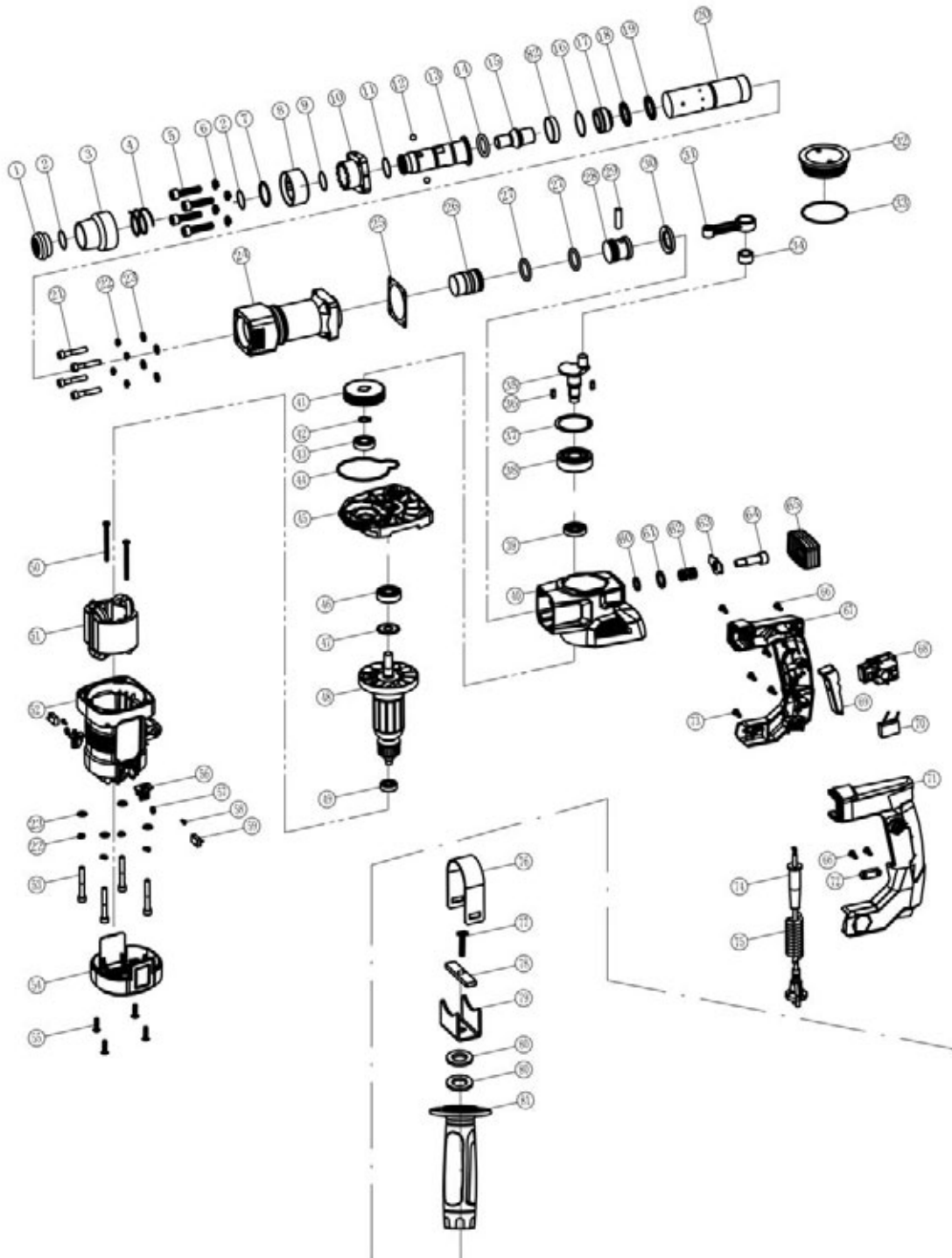


SPARE PARTS DRAWING SHEET FOR

# 1050W 230V SDS Max Breaker

Stock No.81077

Part No.PHD1050MAX



**Help line:(023) 8049 4344. Sales Desk: (023) 8049 4333. General Enquiries: (023) 8026 6355.**

DRAPER TOOLS LTD, HURSLEY ROAD, CHANDLER'S FORD, EASTLEIGH, HANTS. SO53 1YF. U.K.

[drapertools.com](http://drapertools.com)

e-mail: [sales@drapertools.com](mailto:sales@drapertools.com)

RDLJ311016