

DRAPER®

INSTRUCTIONS FOR **15 Litre EPDM Trolley Sprayer**

Stock No.82583

Part No.EWS-12-EPDM

IMPORTANT: PLEASE READ THESE INSTRUCTIONS CAREFULLY TO ENSURE THE SAFE AND EFFECTIVE USE OF THIS PRODUCT.



DRAPER®

GENERAL INFORMATION

These instructions accompanying the product are the original instructions. This document is part of the product, keep it for the life of the product passing it on to any subsequent holder of the product. Read all these instructions before assembling, operating or maintaining this product.

This manual has been compiled by Draper Tools describing the purpose for which the product has been designed, and contains all the necessary information to ensure its correct and safe use. By following all the general safety instructions contained in this manual, it will ensure both product and operator safety, together with longer life of the product itself.

All photographs and drawings in this manual are supplied by Draper Tools to help illustrate the operation of the product.

Whilst every effort has been made to ensure the accuracy of information contained in this manual, the Draper Tools policy of continuous improvement determines the right to make modifications without prior warning.

1. SPECIFICATION

1.1 SCOPE

Special EPDM seals and gaskets material allows for use with: high temperature water, glycol, detergents, acid, organic and inorganic bleaching agents and hydraulic oils.

1.2 SPECIFICATION

Stock no. 82583
Part no. EWS-12-EPDM
Bottle capacity..... 15L
Working capacity 12L

ALWAYS WEAR APPROVED SAFETY GOGGLES, MASK, GLOVES AND PROTECTIVE OVERALLS.

2. HEALTH & SAFETY INFORMATION

2.1 GENERAL SAFETY WARNINGS

⚠️WARNING: READ and UNDERSTAND the Owner's Manual completely before using these sprayers.

The user must always ask the dealer for the safety card of the chemical product to be used, also for disposal of the residual liquid. The use of substances not in conformity with the current regulations is at the user's risk and peril.



Never open the pump when under pressure.



Do not eat, drink or smoke during use.



Do not leave the sprayer exposed to heat sources or intense cold.



Do not spray on windy days.



Do not use for spraying food products (wine, milk, etc.).



Wash hands and face after use.



Do not spray toxic or harmful liquids on persons, animals or foodstuffs.



Do not leave the pump within the reach of children.



Use suitable protection equipment during use.

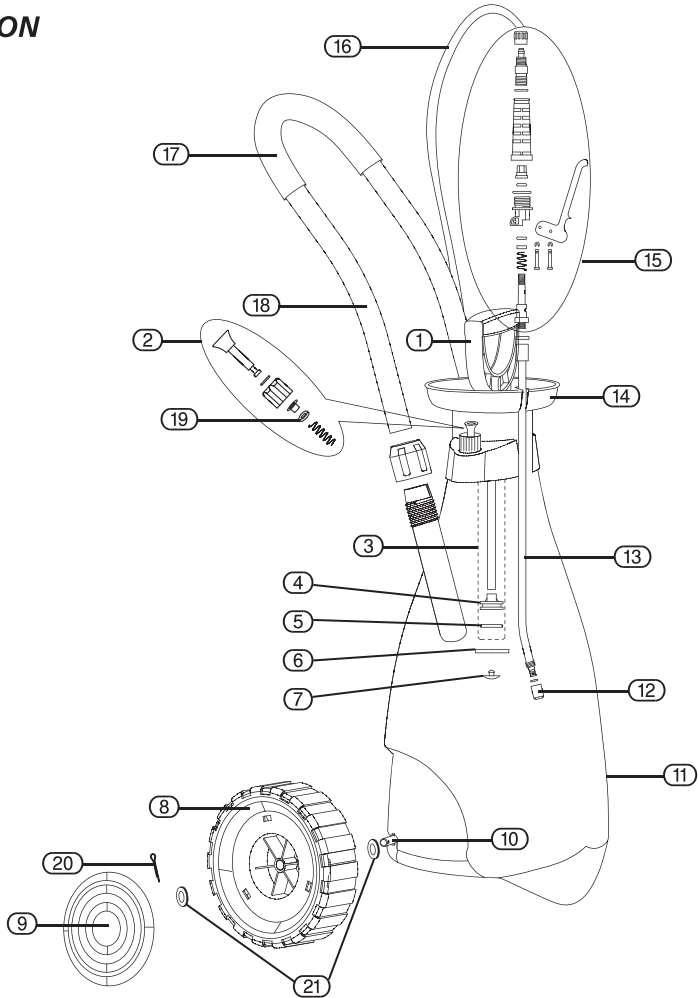


During use make sure no one is near the sprayer.

NOTE: After use, rinse the container then operate the pump with clean water to completely empty the container and piston.

3. TECHNICAL DESCRIPTION

3.1 IDENTIFICATION



- ① Pump Handle
- ② Safety Valve
- ③ Pump Barrel
- ④ Fastener
- ⑤ Fastener O ring
- ⑥ Pump) ring
- ⑦ Inlet Valve
- ⑧ Wheel
- ⑨ Wheel Cover
- ⑩ Wheel Axle
- ⑪ Tank

- ⑫ Nozzle
- ⑬ Copper Lance
- ⑭ Tank Lid
- ⑮ Trigger
- ⑯ Hose
- ⑰ Soft Grip
- ⑱ Metal Handle
- ⑲ Safety Valve Gasket
- ⑳ Metal Bolt
- ㉑ Washer

4. UNPACKING & CHECKING

4.1 PACKAGING

Carefully remove the product from the packaging and examine it for any sign of damage that may have happened during shipping. Lay the contents out and check them against the parts shown below. If any part is damaged or missing; please contact the Draper Helpline (the telephone number appears on the Title page) and do not attempt to use the product.

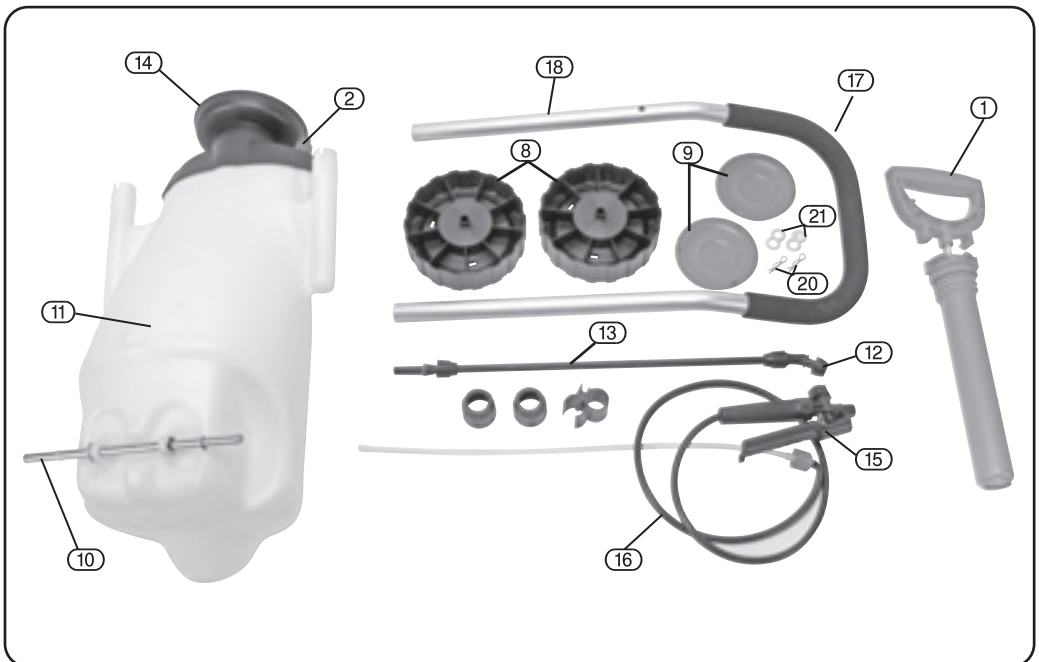
The packaging material should be retained at least during the guarantee period: in case the machine needs to be returned for repair.

Warning! Some of the packaging materials used may be harmful to children. Do not leave any of these materials in the reach of children.

If any of the packaging is to be thrown away, make sure they are disposed of correctly; according to local regulations.

4.2 WHAT'S IN THE BOX?

There are a number of parts in the box which need to be assembled.

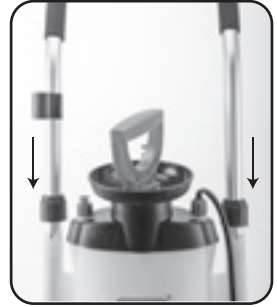


5. OPERATION AND USE

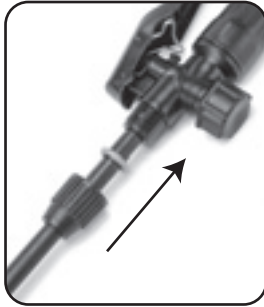
1. Attach the wheel hubs to the wheels, then the wheels to the axle as shown in exploded drawing.



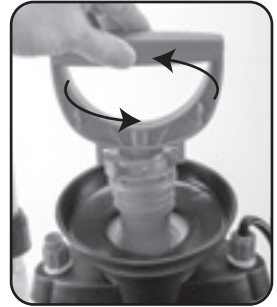
2. Attach the handle to the body, height of handle is adjustable for user comfort.



3. Attach the lance to the trigger, insert lance into trigger mechanism and screw together.



4. Loosen the pump handle in an anti-clockwise direction.



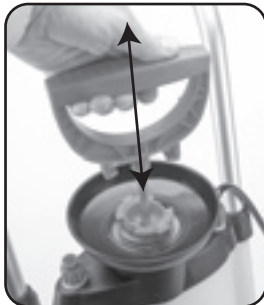
5. Fill with the desired liquid to the max fill line as shown on bottle.



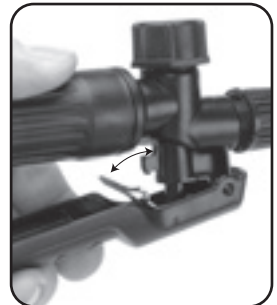
6. Screw the pump handle back down in a clockwise direction.



7. Pump the sprayer about 25 times. The safety valve will leak if the air pressure is too high. Do not overfill with air or liquid.



8. The sprayer will work when the trigger on the nozzle handle is depressed. To spray continuously swing metal catch forward to the locked position. Move catch back to disengage the trigger.



NOTE: Before laying the sprayer down:

Place the lance closed in the lance holder, make sure the cap is closed and place the sprayer on a flat and even surface.

5. OPERATION AND USE

SAFETY PRESSURE VALVE.

NOTE: This will open when the pressure exceeds 2.5bar, and it can also be opened manually to vent the pressure before opening.



6. MAINTENANCE

- After use, rinse the container then operate the pump with clean water to completely empty the container and piston.
- At least once a year clean pump thoroughly, re-grease or lubricate all moving parts.

WARNING:

When assembling and servicing, carefully insert the pump piston without forcing, so as not to damage the gasket.

- **DRAPER TOOLS LIMITED,**
Hursley Road, Chandler's Ford,
Eastleigh, Hampshire. SO53 1YF. U.K.
- **Helpline:** (023) 8049 4344
- **Sales Desk:** (023) 8049 4333
- **Internet:** www.drapertools.com
- **E-mail:** sales@drapertools.com
- **Sales Fax:** (023) 8049 4209
- **General Enquiries:** (023) 8026 6355
- **Service/Warranty Repair Agent**
For aftersales servicing or warranty repairs, please
contact the Draper Tools Helpline for details of an
agent in your local area.

YOUR DRAPER STOCKIST

TAMC200715

©Published by Draper Tools Limited.

No part of this publication may be reproduced, stored in a retrieval system or transmitted in any form or by any means, electronic, mechanical photocopying, recording or otherwise without prior permission in writing from Draper Tools Ltd.