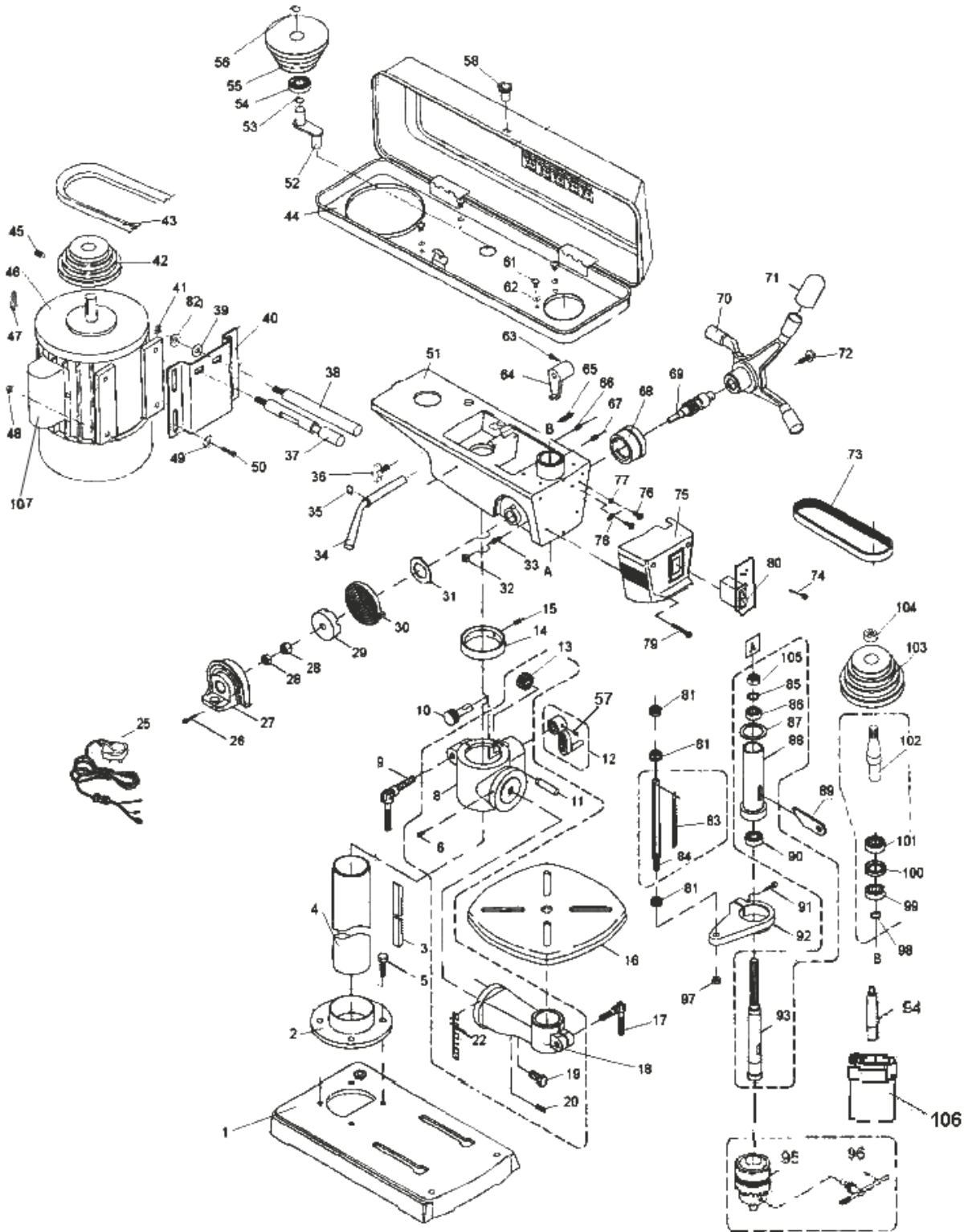


BENCH DRILL

95314 - BD650/16E SPARE PARTS DRAWING





230V 16 SPEED



BENCH DRILL

95314 - BD650/16E SPARE PARTS LISTING

| KEY No. | PART No. | STOCK No. | DESCRIPTION |
|---------|----------------|-----------|------------------------------|
| 1 | YHD19/16ACF-01 | 44507 | Base. |
| 2 | YHD19/16ACF-02 | 44508 | Column shoulder (HD19/16AC). |
| 3 | YHD19/16ACF-03 | 44509 | Rack (HD19/16AC). |
| 4 | YHD19/16ACF-04 | 44510 | Column (HD19/16AC). |
| 5 | YHD19/16ACF-05 | 44511 | Bolt. |
| 6 | YHD19/16ACF-06 | 44512 | Screw. |
| 8 | YHD19/16ACF-08 | 44513 | Table bracket. |
| 9 | YHD19/16ACF-09 | 44514 | Clamp bolt. |
| 10 | YHD19/16ACF-10 | 44515 | Worm gear. |
| 11 | YHD19/16ACF-11 | 44516 | Shaft. |
| 12 | YHD19/16ACF-12 | 44518 | Handle. |
| 13 | YHD19/16ACF-13 | 44519 | Gear. |
| 14 | YHD19/16ACF-14 | 44520 | Rack collar. |
| 15 | YHD19/16ACF-15 | 44521 | Screw. |
| 16 | YHD19/16ACF-16 | 44522 | Table. |
| 17 | YHD19/16ACF-17 | 44523 | Table bolt. |
| 18 | YHD19/16ACF-18 | 44524 | Table arm bracket. |
| 19 | YHD19/16ACF-19 | 44525 | Bolt. |
| 20 | YHD19/16ACF-20 | 44526 | Pin. |
| 22 | YHD19/16ACF-22 | 44527 | Scale. |
| 25 | YHD19/16ACF-25 | 44528 | Plug and cable. |
| 26 | YHD19/16ACF-26 | 44529 | Screw. |
| 27 | YHD19/16ACF-27 | 44530 | End cap. |
| 28 | YHD19/16ACF-28 | 44531 | Nut. |
| 29 | YHD19/16ACF-29 | 44532 | Spring cap. |
| 30 | YHD19/16ACF-30 | 44533 | Spring. |
| 31 | YHD19/16ACF-31 | 44534 | Spring cover. |
| 32 | YHD19/16ACF-32 | 44535 | Nut. |
| 33 | YHD19/16ACF-33 | 44536 | Screw. |
| 34 | YHD19/16ACF-34 | 44537 | Shifter bar. |
| 35 | YHD19/16ACF-35 | 44538 | Circlip. |
| 36 | YHD19/16ACF-36 | 44539 | Slide bar bolt. |
| 37 | YHD19/16ACF-37 | 44540 | Slide bar. |
| 38 | YHD19/16ACF-38 | 44541 | Slide bar. |
| 39 | YHD19/16ACF-39 | 44542 | Washer. |
| 40 | YHD19/16ACF-40 | 44543 | Motor bracket. |

| KEY No. | PART No. | STOCK No. | DESCRIPTION |
|---------|----------------|-----------|----------------|
| 41 | YHD19/16ACF-41 | 44544 | Nut. |
| 42 | YHD19/16ACF-42 | 44545 | Motor pulley. |
| 43 | YHD19/16ACF-43 | 44546 | V-Belt. |
| 44 | YHD19/16ACF-44 | 44547 | Pulley cover. |
| 45 | YHD19/16ACF-45 | 44548 | Screw. |
| 46 | YHD19/16ACF-46 | 44549 | Motor. |
| 47 | YHD19/16ACF-47 | 44550 | Key. |
| 48 | YHD19/16ACF-48 | 44551 | Nut. |
| 49 | YHD19/16ACF-49 | 44552 | Washer. |
| 50 | YHD19/16ACF-50 | 44553 | Bolt. |
| 51 | YHD19/16ACF-51 | 44554 | Housing. |
| 52 | YHD19/16ACF-52 | 44555 | Centre shaft. |
| 53 | YHD19/16ACF-53 | 44556 | Circlip. |
| 54 | YHD19/16ACF-54 | 44557 | Ball bearing. |
| 55 | YHD19/16ACF-55 | 44558 | Centre pulley. |
| 56 | YHD19/16ACF-56 | 44560 | Circlip. |
| 57 | YHD19/16ACF-57 | 44561 | Screw. |
| 58 | YHD19/16ACF-58 | 44562 | Lock. |
| 61 | YHD19/16ACF-61 | 44564 | Screw. |
| 62 | YHD19/16ACF-62 | 44565 | Washer. |
| 63 | YHD19/16ACF-63 | 44566 | Bolt. |
| 64 | YHD19/16ACF-64 | 44567 | Handle. |
| 65 | YHD19/16ACF-65 | 44568 | Screw. |
| 66 | YHD19/16ACF-66 | 44569 | Screw. |
| 67 | YHD19/16ACF-67 | 44570 | Screw. |
| 68 | YHD19/16ACF-68 | 44571 | Depth nut. |
| 69 | YHD19/16ACF-69 | 44572 | Shaft. |
| 70 | YHD19/16ACF-70 | 44573 | Handle. |
| 71 | YHD19/16ACF-71 | 44574 | Handle cover. |
| 72 | YHD19/16ACF-72 | 44576 | Bolt. |
| 73 | YHD19/16ACF-73 | 44577 | V-Belt. |
| 74 | YHD19/16ACF-74 | 44578 | Screw. |
| 75 | YHD19/16ACF-75 | 44579 | Switch box. |
| 76 | YHD19/16ACF-76 | 44580 | Screw. |
| 77 | YHD19/16ACF-77 | 44581 | Washer. |
| 78 | YHD19/16ACF-78 | 44582 | Washer. |



230V 16 SPEED



BENCH DRILL

95314 - BD650/16E SPARE PARTS LISTING

| KEY No. | PART No. | STOCK No. | DESCRIPTION |
|---------|----------------|-----------|-----------------|
| 79 | YHD19/16ACF-79 | 44583 | Screw. |
| 80 | YHD19/16ACF-80 | 44584 | Switch. |
| 81 | YHD19/16ACF-81 | 44585 | Nut. |
| 82 | YHD19/16ACF-82 | 44586 | Washer. |
| 83 | YHD19/16ACF-83 | 44587 | Scale. |
| 84 | YHD19/16ACF-84 | 44588 | Scale base. |
| 85 | YHD19/16ACF-85 | 44589 | Circlip. |
| 86 | YHD19/16ACF-86 | 44590 | Ball bearing. |
| 87 | YHD19/16ACF-87 | 44591 | O-ring. |
| 88 | YHD19/16ACF-88 | 44592 | Spindle sleeve. |
| 89 | YHD19/16ACF-89 | 14460 | Wedge. |
| 90 | YHD19/16ACF-90 | 44593 | Ball bearing. |
| 91 | YHD19/16ACF-91 | 44594 | Bolt. |
| 92 | YHD19/16ACF-92 | 44595 | Plate. |
| 93 | YHD19/16ACF-93 | 44596 | Spindle arbor. |

| KEY No. | PART No. | STOCK No. | DESCRIPTION |
|---------|-----------------|-----------|-----------------|
| 94 | YHD19/16ACF-94 | 14284 | Arbor. |
| 95 | YGCA | 45011 | Chuck. |
| 96 | DK60 | 76984 | Chuck key. |
| 97 | YHD19/16ACF-97 | 44597 | Nut. |
| 98 | YHD19/16ACF-98 | 44598 | Circlip. |
| 99 | YHD19/16ACF-99 | 44599 | Ball bearing. |
| 100 | YHD19/16ACF-100 | 44600 | Spacer. |
| 101 | YHD19/16ACF-101 | 44601 | Ball bearing. |
| 102 | YHD19/16ACF-102 | 44602 | Insert pulley. |
| 103 | YHD19/16ACF-103 | 44603 | Spindle pulley. |
| 104 | YHD19/16ACF-104 | 44604 | Pulley nut. |
| 105 | YHD19/16ACF-105 | 44605 | Nut. |
| 106 | YHD19/16ACF-106 | 44606 | Light body. |
| * | YGC60 | 65964 | Chuck guard. |
| 107 | YHD19/16ACF-107 | 44607 | Capacitor. |