

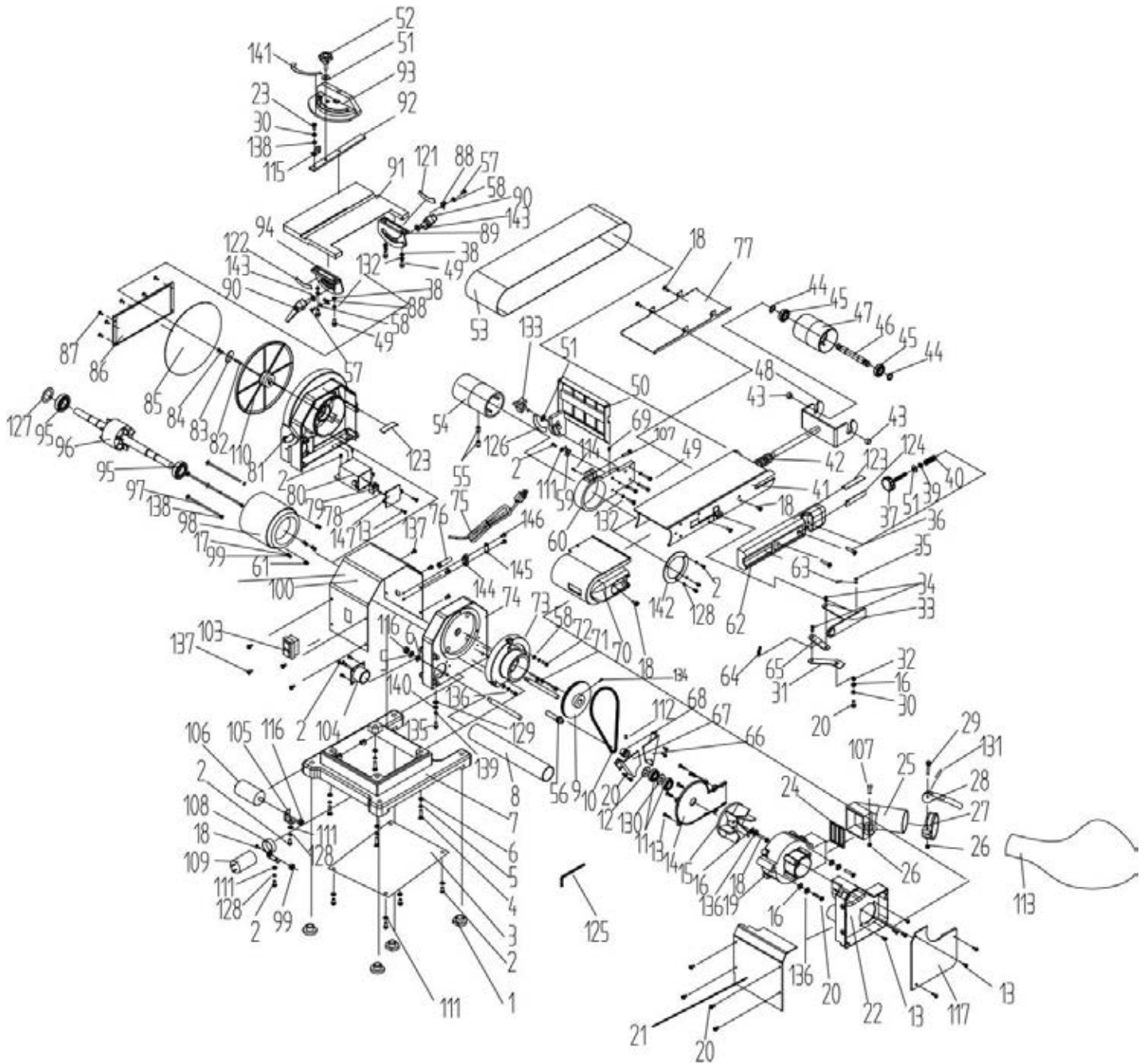
**DRAPER**<sup>®</sup>

230V

# BELT & DISC SANDER

GB

98525 – BDS500D SPARE PARTS DRAWING





230V

# BELT & DISC SANDER



98525 – BDS500D SPARE PARTS LISTING

KEY No.	PART No.	STOCK No.	DESCRIPTION
1	YBDS500D-01	82417	Rubber foot (x4)
2, 16 18, 20 30 - 37 39 - 49 51 54 - 55 60 62 - 65 69 - 70 107, 114 123 - 124 128, 132 142	YBDS500D-41A	82605	Belt frame and tension assembly
2 50 - 51 59, 111 126, 133	YBDS500D-50A	82606	Belt work table assembly
3	YBDS500D-03	82479	Bottom plate
4			(NP) Screw (white)
5 - 6 9, 13 17, 58 71 - 74 78 - 84 95 - 100 103, 110 116, 127 134, 136 147	YBDS500D-100A	83347	Motor and cover assembly
7	YBDS500D-07	82521	Base
8	YBDS500D-08	82524	Connect tube
10	YBDS500D-10	82560	V-belt
11 - 16 18 - 20 56 66 - 68 112, 130 136	YBDS500D-56A	82592	Collector assembly
13, 22 117	YBDS500D-22A	82596	Dust storage box assembly

KEY No.	PART No.	STOCK No.	DESCRIPTION
18, 99 105 - 106 108 - 109	YBDS500D-106A	87064	Capacitor assembly
21	YBDS500D-21	82593	Front cover
23, 30 51 - 52 92 - 93 115, 138 141	YBDS500D-93A	86989	Mitre gauge assembly
24 - 29 107, 131	YBDS500D-25A	82597	Dust exhaust assembly
38			(NP) Flat washer
49			(NP) Inner hex screw
53			Sanding belt
57 - 58 88, 90 94, 122 143	YBDS500D-94A	86995	Disc right support assembly
57 - 58 88 - 90 121, 143	YBDS500D-90A	86967	Handle assembly
61			(NP) Cord bushing
75	YBDS500D-75	83866	Power cord
76			(NP) Clip
77	YBDS500D-77	86862	Belt guard
85			Sanding disc
86	YBDS500D-86	86934	Disc cover
87			(NP) Screw
91	YBDS500D-91	86970	Disc work table
104	YBDS500D-104	87009	Outlet
113	YBDS500D-113	87339	Dust bag
125			(NP) Inner hex wrench
129			(NP) Tooth lock washer
135			(NP) Screw
137			(NP) Screw
139			(NP) Lock washer
140			(NP) Flat washer
144			(NP) Fixed plate
145			(NP) Plate
146			(NP) Screw