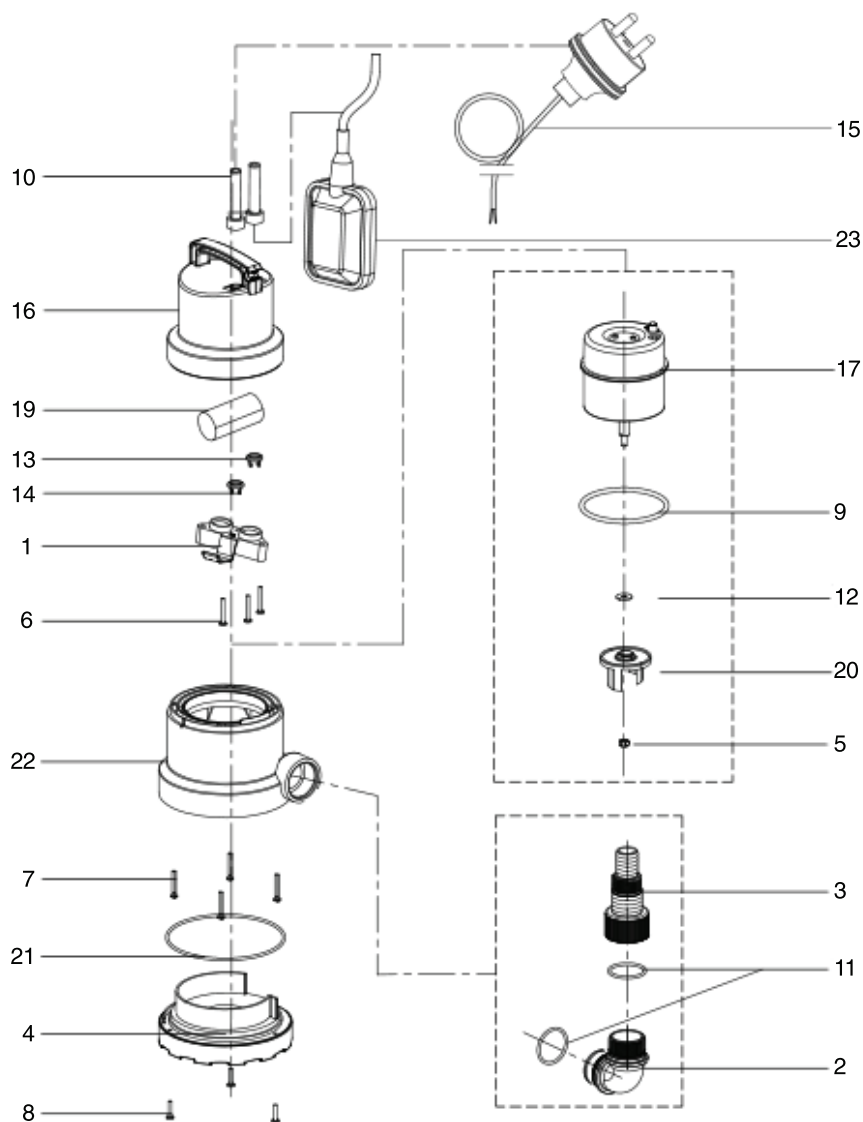


230V SUBMERSIBLE
WATER PUMP
 WITH FLOAT SWITCH
98912 - SWP120A SPARE PARTS LISTING



| KEY No. | PART No. | STOCK No. | DESCRIPTION |
|---------|-------------|-----------|----------------------------|
| 1 | Y-SWP121-01 | 70575 | CAPACITOR CLIP |
| 2 | Y-SWP121-02 | 70576 | ANGLE HEAD |
| 3 | Y-SWP121-03 | 70577 | STRAIGHT PIPE |
| 4 | Y-SWP121-04 | 70580 | BASE |
| 5 | Y-SWP121-05 | 70585 | LOCKNUT |
| 6 | Y-SWP121-06 | 70588 | SCREW |
| 7 | Y-SWP121-07 | 70591 | SCREW |
| 8 | Y-SWP121-08 | 70593 | SCREW |
| 9 | Y-SWP121-09 | 70594 | MAIN SEAL |
| 10 | Y-SWP121-10 | 70595 | CABLE JACKET |
| 11 | Y-SWP121-11 | 70596 | HOSE CONNECTOR SEAL |
| 12 | Y-SWP121-12 | 70597 | IMPELLER ADJUSTMENT GASKET |

| KEY No. | PART No. | STOCK No. | DESCRIPTION |
|---------|--------------|-----------|-------------------------------|
| 13 | Y-SWP121-13 | 70598 | WIRE CLAW |
| 14 | Y-SWP121-14 | 70600 | WIRE CLAW |
| 15 | Y-SWP121-15 | 70601 | POWER CABLE WITH BRITISH PLUG |
| 16 | Y-SWP121-16 | 70602 | MAIN BODY |
| 17 | Y-SWP121-17 | 70603 | MOTOR |
| 18 | Y-SWP121-18 | 70605 | MAIN BODY JACKET HOLE |
| 19 | Y-SWP121-19 | 70606 | CAPACITOR |
| 20 | Y-SWP121-20 | 70607 | IMPELLER |
| 21 | Y-SWP121-21 | 70609 | MIDDLE PART SEAL |
| 22 | Y-SWP121-22 | 70610 | MIDDLE PART |
| 23 | Y-SWP120A-23 | 70612 | FLOAT SWITCH |