

FOR A PROPER JOB  
**avnt**

Product Catalogue 2017

# FOR A PROPER JOB

Offering well made, well presented and well priced products, Avit appeals to the DIYer and Professional alike. Striking packaging and a bright modern look creates added impact in store, encouraging trade up and increasing your sales.

Avit packaging is both colourful and eye-catching, features an image of the product in use, and a clear product description to aid customer selection. The addition of colour-coding further enhances ease of shop.

FOR A PROPER JOB<sup>®</sup>  
**avit**

Power Tool Accessories	221
Sawing & Cutting	222-223
Building & Decorating	223-225
Measuring & Marking	226
Insulated Sets	227
Pliers, Cutters & Wrenches	227-228
Engineering & Automotive	228-229
Head & Eye Protection	229-230
Ear Protection	230
Respiratory Protection	231-232
Body Protection	232
Hand Protection	232-233





# AVIT MANSONRY

## 1m SDS 3 piece drill bit set

**AV08014**

Impact resistant tungsten carbide tips  
3 piece set containing 12, 16 and 24mm x 1m



**POWER TOOL ACCESSORIES**



**Masonry 1m SDS Drill Bit Set - 3 Piece Set**

Impact resistant tungsten carbide tips.

CONTENTS:  
12, 16 & 24mm x 1m.

Item Number	i	📦
AV08014	3 Piece Set	6



**HSS Drill Bit Set - 13 Piece Set**

For drilling through metal. Precision ground for greater accuracy.

CONTENTS:  
1.5, 2, 2.5, 3, 3.2, 3.5, 4, 4.5, 4.8, 5, 5.5, 6 & 6.5mm

Item Number	i	📦
AV08011	13 Piece Set	6



**Masonry SDS Drill Bit Set - 5 Piece Set**

Impact resistant tungsten carbide tips.

CONTENTS:  
5 & 6 x 110mm, 7, 8 & 10 x 160mm.

Item Number	i	📦
AV08012	5 Piece Set	5



**Flat Bits 13-32mm - 6 Piece Set**

HSS, hardened for long life performance. Brad pointed for accurate drill starts. Ground wing spur for clean cutting.

CONTENTS:  
13, 16, 20, 22, 25 & 32mm.

Item Number	i	📦
AV08013	6 Piece Set	20



**Masonry Drill Bit Set - 5 Piece Set**

Impact resistant tungsten carbide tips.

CONTENTS:  
4, 5, 6, 8 & 10mm.

Item Number	i	📦
AV08010	5 Piece Set	6



**Angle Driver**

Slim design allows power drilling/driving in confined spaces. 1/4" hexagon drive chuck and shank. Suitable for use with most power drills.

Item Number	i	📦
AV08020		6

## SAWING & CUTTING



### Retractable Knife

3 lockable positions for variable cutting depths. Blade retracts for safe storage.

Item Number		
AV01001		12



### Mini Hacksaw

For cutting metal. Screw adjustment for quick and easy blade tensioning. Soft grip handle for extra comfort.

Item Number		
AV09010	150mm (6")	6



### Auto Load Trimming Knife - with 5 Blades

Auto load blades for increased speed and safety. 4 lockable positions for variable cutting depths. Blade retracts for safe storage.

Item Number		
AV01010	With 5 blades	6



### Hacksaw

For cutting metal. Wing nut adjustment for quick and easy blade tensioning. Two position blade for straight and 45 degree angle cuts. Rubber handle for increased grip.

Item Number		
AV09011	300mm (12")	6



### Trimming Knife Blades - 10 Pieces

Two notch blades suitable for most trimming knives. Complete with plastic dispenser for safe storage.

Item Number		
AV01090	10 pieces	6



### Tri-Cut Handsaw

For cutting wood. Triple ground and hardened teeth for effortless cutting. Cuts on both the push and pull stroke for fast and smooth cuts. 45 & 90 degree angle guide built into handle for easy marking. Rubberised handle for extra grip.

Item Number		
AV09020	550mm (22")	6



### Coping Saw & Assorted Blade Set

Wings adjust blade through 360 degrees for intricate cutting.

**CONTENTS:**

Wood cutting blades; 2 x 16tpi & 1 x 20 tpi and metal cutting blades; 1 x 24tpi & 1 x 28tpi.

Item Number	
AV09030	6



### Wood Chisel Set - 4 piece set: 6.5, 13, 19 & 25mm

Hardened and tempered steel blades for lasting durability. Shatter resistant handles for extra safety. Steel strike plates prevent handle damage.

**CONTENTS:**

6.5, 13, 19 & 25mm.

Item Number		
AV10010	4 piece set	6



### Multi-Purpose Snips

Suitable for cutting a variety of different materials including: soft wire, cable, rubber, carpet, plastic, leather and tin sheet. Stainless steel blades for maximum corrosion resistance. Safety catch keeps the blades together for safe storage.

Item Number	
AV06040	6

## BUILDING & DECORATING



### Fibreglass Claw Hammers

Hardened and tempered head for lasting durability. Tough fibreglass damage resistant handle. Shock absorbing non-slip grip for additional safety.

Item Number		
AV03010	450g (16oz)	6
AV03011	560g (20oz)	6



### Club Hammer

Hardened and tempered head for lasting durability. Tough fibreglass damage resistant handle. Shock absorbing non-slip grip for additional safety.

Item Number		
AV03020	1.1kg (2.5lb)	3



### Hard Wood Sledge Hammers

Hardened forged steel head for strength and durability. Tough hickory shaft for high impact applications.

Item Number		
AV03030	7lb (3.2kg)	4
AV03031	10lb (4.5kg)	4
AV03032	14lb (6.4kg)	2



### Electrician's Bolster

Hardened and tempered cutting edge for lasting durability. Impact absorbing handle offers additional comfort. Built-in hand guard for increased safety.

Item Number		
AV04010	57mm (2.25")	6



### Broad Heel Brick Trowel

Hardened and tempered blade for lasting durability. Soft grip handle for increased comfort.

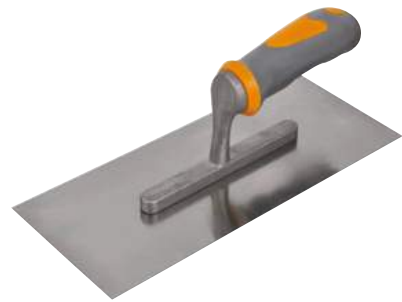
Item Number		
AV04021	250mm (10")	6



### Brick Bolster

Hardened and tempered cutting edge for lasting durability. Impact absorbing handle offers additional comfort. Built-in hand guard for increased safety.

Item Number		
AV04011	100mm (4")	6



### Plasterer's Trowel

Hardened and tempered blade for lasting durability. Soft grip handle for increased comfort.

Item Number		
AV04022	280mm (11")	6



### Pointing Trowel



Hardened and tempered blade for lasting durability. Soft grip handle for increased comfort.

Item Number		
AV04020	150mm (6")	6



### Spring Clamps

Hinged jaws for clamping a variety of shapes.

Item Number		
AV12010	100mm (4")	6
AV12011	150mm (6")	6
AV12012	230mm (9")	6





### Filling Knife

Hardened stainless steel blade for lasting durability.

Item Number		
AV12025	50mm (2")	6



### Cotton Dust Sheet

100% cotton twill – for increased protection of furniture and flooring. Machine washable – re-usable and long lasting. Absorbs paint splatter – for added protection.

Item Number		
AV12030	3.6 x 2.6m (12 x 9ft)	3



### General Purpose Scraper

Ideal for a variety of tasks including the removal of paint, glue or putty from even surfaces. Multi-position blade for variable scraping depths. Soft grip handle for increased comfort. Blade retracts for safe storage.

Item Number		
AV12021		6



### Wrecking Bars

Hardened high carbon steel for strength and durability.

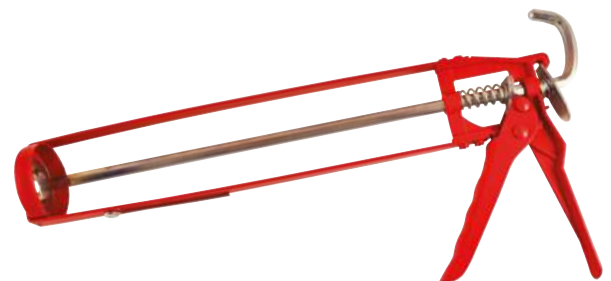
Item Number		
AV04030	450mm (18")	12
AV04031	600mm (24")	15
AV04032	750mm (30")	12



### Scraper Blades - 5 Pieces

Replacement blades for Avit General Purpose Scraper (AV12021).

Item Number		
AV12020	5 Pieces	12



### Sealant Gun

Takes up to 400ml cartridges. Includes nozzle cleaner.

Item Number		
AV12040	(310-400ml)	6

## MEASURING & MARKING



### Tape Measure

Convenient tape lock for ease of use. Self-retracting tape blade for quick and easy storage.

Item Number	↔	📦
AV02001	5m (16ft)	6



### Heavy Duty Tape Measure

Convenient tape lock for ease of use. Pause buttons for fingertip control. Heavy duty cover for maximum grip.

Item Number	↔	📦
AV02010	3m (10ft)	6
AV02011	5m (16ft)	6
AV02012	7.5m (25ft)	6



### Spirit Level

3 vials for measuring vertical, horizontal & 45 degrees. Strong lightweight construction for ease of use. Grab handles for improved grip.

Item Number	↔	📦
AV02031	1m (3.3ft)	6



### Angle Measure

Versatile design suitable for use with a straight edge or spirit level. Simple dial mechanism can be used to set or identify any angle up to 90 degrees.

Item Number	📦
AV02032	6



### Pocket Spirit Level

3 vials for measuring vertical, horizontal & 45 degrees. Magnetic base for ease of use.

Item Number	↔	📦
AV02033	230mm (9")	6

**INSULATED SETS**



**Insulated Screwdriver Set - 5 Piece Set**

Chrome vanadium blades for extra strength. Soft grip handles for increased comfort. For live working up to 1,000V.

CONTENTS:  
2 x PZ, sizes: 1 x 80 & 2 x 100mm and 3 x slotted, sizes: 3 x 75, 4 x 100 & 5.5 x 125mm.

IEC 60900

Item Number	i	📦
AV05050	5 Piece Set	4



**Insulated Plier Set - 3 Piece Set**

Hardened and tempered jaws for lasting durability. For live working up to 1,000V. Soft grip handles for increased comfort.

CONTENTS:  
1 x Combination Plier - 180mm (7"), 1 x Side Cutter - 160mm (6") and 1 x Long Nose Pliers - 200mm (8").

IEC 60900

Item Number	i	📦
AV06051	3 Piece Set	4

**PLIERS, CUTTERS & WRENCHES**



**Side Cutters**

For cutting up to 2mm Ø medium hard wire. Hardened and tempered jaws for lasting durability. Soft grip handle for increased comfort.

Item Number	↔	📦
AV06010	180mm (7")	6



**Combination Pliers**

For gripping, bending, twisting and cutting metal. Hardened and tempered jaws for lasting durability. Soft grip handle for increased comfort.

Item Number	↔	📦
AV06020	200mm (8")	6



**Waterpump Pliers**

Adjustable jaws for multiple applications. Hardened and tempered jaws for lasting durability. Soft grip handle for increased comfort.

Item Number	↔	📦
AV06030	250mm (10")	6



## Adjustable Wrench

Hardened and tempered jaws for lasting durability. Soft grip handle for increased comfort.

Item Number		
AV07010	200mm (8")	6
AV07011	250mm (10")	6



## Socket & Bit Set - 16 Piece Set

Ratchet handle with forward and reverse settings for added control. Chrome vanadium components for extra strength.

CONTENTS:

Ratchet handle, 75mm extension and universal joint, spinner handle with 1/4" drive recess and assorted sockets: 12 x metric, sizes; 4, 4.5, 5, 5.5, 6, 7, 8, 9, 10, 11, 12, 13mm.

Item Number		
AV07031	16 Piece Set	4

## ENGINEERING & AUTOMOTIVE



## Socket & Bit Set - 40 Piece Set

Ratchet handle with forward, reverse and lockable settings for added control. Chrome vanadium sockets for extra strength. Soft grip handle for increased comfort.

CONTENTS:

Ratchet driver. 1/4" inch drive adaptor, magnetic extension, assorted metric sockets: 7 x metric, sizes: 6,7,8,9,10,11 & 12mm 7 x AF sizes: 3/16, 1/4, 5/16, 11/32, 3/8, 7/16 & 1/2", assorted screwdriver bits: 3 x slotted, sizes: 3/16, 1/4 & 9/32", 3 x cross point, sizes: No.1, 2 & 3, 8 x hexagon, sizes: 1.5, 2, 2.5, 3, 4, 5, 5.5 & 6mm, 2 x square drive, sizes: 1 & 2 and 7 x TX, sizes: 10, 15, 20, 25, 27, 30 & 40.

Item Number		
AV07030	40 Piece Set	3



## Metric Combination Spanner Set - 10 Piece Set

Chrome vanadium steel for extra strength. Chrome plated for maximum corrosion resistance.

CONTENTS:

7,8,9,10,11,12,13,14,15 & 16mm.

Item Number		
AV07020	10 Piece Set	3



## Screwdriver Set - 4 Piece Set

Chrome vanadium blades for extra strength. Soft grip handles for extra comfort.

CONTENTS:

2 x slotted, sizes: 5 x 75 & 6 x 100mm and 2 x PZ, sizes: 1 x 100 & 2 x 100mm.

Item Number		
AV05011	4 Piece Set	5



### Screwdriver Set - 7 Piece Set

Chrome vanadium blades for extra strength.  
Soft grip handles for extra comfort.

CONTENTS:  
4 x slotted, sizes: 4 x 75, 5 x 100, 6 x 100 & 8 x 150mm and 3 x PZ, sizes: 0 x 75, 1 x 75 & 2 x 100mm.

Item Number		
AV05015	7 Piece Set	30



### Precision Screwdrivers - 6 Piece Set

Swivel tops for fingertip control. Hardened and tempered steel blades for lasting durability.

CONTENTS:  
4 x slotted, sizes: 1.4, 2.0, 2.4 & 3mm and 2 x PH, sizes: 0 and 1.

Item Number		
AV05010	6 Piece Set	6



### Stepless Ratchet Driver

Ratchet handle with forward and reverse selector for additional control. Cam-drive stepless ratchet for a smoother, more comfortable action.

Item Number		
AV05020	45mm (1 3/4")	6



### Stepless Ratchet Driver Set

Ratchet handle with forward and reverse selector for additional control. Cam-drive stepless ratchet for a smoother, more comfortable action. Bits store in handle for easy access.

CONTENTS:  
Ratchet driver with 1/4" hexagon drive magnetic holder.  
Assorted screwdriver bits: 2 x slotted, 3 x PH and 3 x PZ.

Item Number		
AV05021	100mm (4")	6

## HEAD & EYE PROTECTION



### Cover Spectacles - Clear

Lightweight design fits comfortably over most prescription spectacles. Polycarbonate construction for protection against low energy impact.

EN166:1F

Item Number		
AV13020	Clear	6



### Wraparound Safety Glasses - Clear

Frameless sports style design for distortion free vision. Cushioned temple pads for superior comfort and grip. Polycarbonate lens for protection against low energy impact.

EN166:1F

Item Number		
AV13021	Clear	5



### Wraparound Safety Glasses - Indoor/Outdoor

Tinted lens ideal for moving between indoor and outdoor locations. Frameless sports style design for distortion free vision. Cushioned temple pads for superior comfort and grip. Polycarbonate lens for protection against low energy impact.

EN166:1F

Item Number	i	📦
AV13022	Indoor/Outdoor	5



### Safety Goggles - Direct Vent

Soft contoured frame for a secure and comfortable fit. Adjustable elasticated strap for optimum fit. Polycarbonate lens for protection against medium energy impact.

EN166:1F

Item Number	i	📦
AV13023	Direct Vent	6



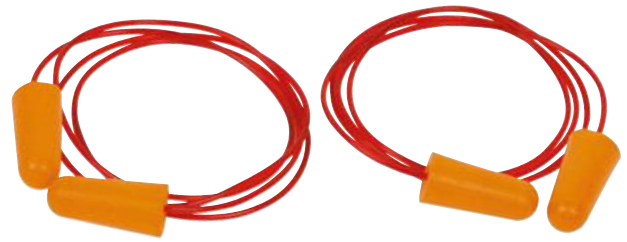
### Wraparound Safety Glasses - Anti-mist

Anti-mist coating to prevent fogging. Frameless sports style design for distortion free vision. Cushioned temple pads for superior comfort and grip. Polycarbonate lens for protection against low energy impact.

EN166:1F

Item Number	i	📦
AV13024	Anti-mist	5

## EAR PROTECTION



### Corded Ear Plugs - 2 Pairs

Cord attachment prevents accidental loss. Tapered foam for easy insertion and removal. Polymer foam compresses and expands for a perfect fit.

EN352-2

Item Number	i	📦
AV13010	2 Pairs	12



### Tapered Ear Plugs - 5 Pairs

Tapered shape for easy insertion and removal. Polymer foam compresses and expands for a perfect fit.

EN352-2

Item Number	i	📦
AV13011	5 Pairs	12



### Ear Defenders

Lightweight design with padded cups for all day comfort. Adjustable headband for optimum fit.

EN352-1

Item Number	📦
AV13012	4

**RESPIRATORY PROTECTION**



**Premium Disposable Odour Mask P1 - with valve**

Active carbon layer protects against nuisance level odours e.g. brush/roller application of most domestic paints and varnish. Valve reduces effort by making it easier to exhale. Two point strap and adjustable nose clip for optimum fit. Foam nose piece for extra comfort. Colour coded straps and valve for easy identification.

EN149, FFP1 NR

Item Number	i	📦
AV13030	With Valve	12



**Disposable Mask P1**

Protection against low level fine dust, oil or water based mists, e.g. drilling brick, hand sanding, laying loft insulation. Two point strap and adjustable nose clip for optimum fit. Foam nose piece for extra comfort. Colour coded straps for easy identification.

EN149, FFP1 NR

Item Number	i	📦
AV13031	Twin Pack	12
AV13032	Box of 20	



**Premium Disposable Mask P1 - with valve**

Valve reduces effort by making it easier to exhale. Protection against low level fine dust, oil or water based mists, e.g. drilling brick, hand sanding, laying loft insulation. Two point strap and adjustable nose clip for optimum fit. Foam nose piece for extra comfort. Colour coded straps and valve for easy identification.

EN149, FFP1 NR

Item Number	i	📦
AV13033	With Valve	12



**Disposable Mask P2**

Protection against moderate level fine dust, oil or water based mists, e.g. sanding hardwoods/MDF, mixing plaster/cement. Two point strap and adjustable nose clip for optimum fit. Foam nose piece for extra comfort. Colour coded straps for easy identification.

EN149, FFP12NR

Item Number	i	📦
AV13034	Twin Pack	12
AV13035	Box of 20	3



### Premium Disposable Mask P2 - with valve

Valve reduces effort by making it easier to exhale. Protection against moderate level fine dust, oil or water based mists, e.g. sanding hardwoods/MDF, mixing plaster/cement. Two point strap and adjustable nose clip for optimum fit. Foam nose piece for extra comfort. Colour coded straps for easy identification.

EN149, FFP12NR

Item Number	i	📦
AV13036	With Valve	12

## BODY PROTECTION



### Hard Hat

Tough PE shell for excellent shock absorption. 6-point terylene cradle for a comfortable fit. Brushed nylon sweatband for additional comfort. Pin-lock adjustment system for a snug fit. Electrical insulation to 440v for enhanced protection.

EN397

Item Number	i	📦
AV13060	Full peak, 440v	3



### Hi-Vis Vest XL

Fluorescent background and retroreflective bands for intermediate protection. Hook and loop fastening for a comfortable fit. 100% polyester (PES) for durability.

EN471 Class 2, EN340

Item Number	i	📦
AV13100	Yellow, Extra Large Only	6

## HAND PROTECTION



### Latex Coated Gloves

Latex coating to palm and fingers for good grip and dexterity. Seamless liner for pro-longed comfort. Superior abrasion resistance for lasting durability. Excellent tear resistance for additional protection.

Item Number	i	📦
AV13077	Extra Large	12



### Gripper Gloves

Provides protection for all manual handling tasks. Non-slip criss cross pattern provides grip in all conditions. Seamless construction for pro-longed comfort. Excellent tear resistance for additional protection.

EN420; EN388

Item Number	i	📦
AV13078	Large	12
AV13079	Extra Large	12





### Latex Gloves - Box of 100

Latex for increased protection and dexterity. Pre-powdered for ease of putting on. Ambidextrous fit allows each glove to be worn on either hand. Beaded cuff for reduced risk of tearing.

EN420, EN388 & EN374-2

Item Number	i	📦
AV13080	Large	12



### Nitrile Coated Gloves

Nitrile coating to palm and fingers for excellent dry grip. Seamless liner for pro-longed comfort. Superior abrasion resistance for lasting durability. Coated area provides resistance to liquids, oil and grease.

EN420 Class 2, EN388

Item Number	i	📦
AV13072	Large	12
AV13073	Extra Large	12



### Rigger Gloves

Full palm cowhide split leather for durability. Lined palm for enhanced comfort. Rubberised cuff for increased wrist protection. Vein patch for additional safety. Cotton back for breathability and extra comfort. Heat resistant up to 50°C.

EN420 Class 2, EN388

Item Number	i	📦
AV13070	Large	12
AV13071	Extra Large	12



### PU Coated Gloves

Polyurethane coating to palm and fingers for good grip and dexterity. Seamless liner for pro-longed comfort. Superior abrasion resistance for lasting durability. Excellent tear resistance for additional protection.

EN420 Class 2, EN388

Item Number	i	📦
AV13074	Large	12
AV13075	Extra Large	12

Carl  
Kammerling  
International

Brand  
Innovation

Carl Kammerling International Ltd. reserves the right to alter products and / or specifications without prior notice. Prices are correct at time of printing E. & O.E. All trademarks are acknowledged. All photographs are for guidance only and do not necessarily represent the products illustrated.

©2017. Published by Carl Kammerling International Ltd. No part of this publication may be produced without prior permission from Carl Kammerling International Ltd.

M4000ENG 10k / 03-17