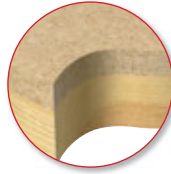


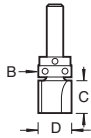
GUIDED TEMPLATE PROFILER

Shank mounted bearing profilers are ideal for template guidance. Use for rebating and trimming edges only.

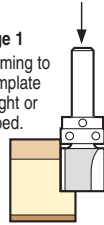
▲ Extra care must be taken to avoid cutter breakage. A max. 3mm overlap should be left before copy profiling.



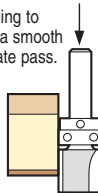
Ref. C121



Stage 1
Trimming to a template straight or shaped.



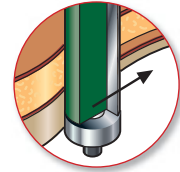
Stage 2
Trimming to make a smooth accurate pass.



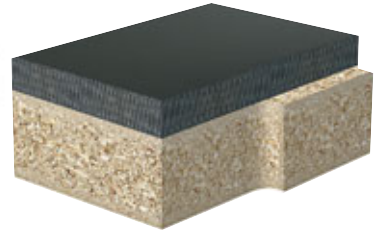
| D mm | C mm | B mm | Product Ref. | Shank Diameter | | | |
|------|------|------|--------------|----------------|--------|--------|--------|
| | | | | 1/4" | 8mm | 12mm | 1/2" |
| 9.5 | 6.35 | 9.5 | C121G | £14.84 | - | - | - |
| 9.5 | 12.7 | 9.5 | C121H | £18.88 | - | - | - |
| 9.5 | 25.0 | 9.5 | C121P | £29.20 | - | - | - |
| 12.7 | 4.0 | 12.7 | C121K | £19.43 | - | - | - |
| 12.7 | 6.35 | 12.7 | C121N | £22.36 | - | - | - |
| 12.7 | 9.5 | 12.7 | C121B | £21.17 | - | - | - |
| 12.7 | 12.7 | 12.7 | C121F | £23.21 | - | - | - |
| 12.7 | 25.4 | 12.7 | C121 | £20.90 | - | - | - |
| 12.7 | 32.0 | 12.7 | C121D | £23.36 | - | - | - |
| 15.9 | 12.7 | 15.9 | C121E | £23.36 | - | - | - |
| 15.9 | 25.0 | 15.9 | C121C | £33.09 | - | - | - |
| 16.0 | 19.0 | 16.0 | C121A | - | £25.79 | - | - |
| 19.0 | 63.0 | 19.0 | C165B | - | - | - | £52.95 |
| 19.1 | 19.1 | 19.1 | C165 | - | - | - | £27.13 |
| 19.1 | 25.4 | 19.1 | C123 | £27.13 | - | - | - |
| 19.1 | 50.0 | 19.1 | C166 | - | - | £45.25 | £45.25 |
| 25.0 | 25.0 | 25.0 | N C166B | - | - | - | £48.62 |

90° DOUBLE GUIDED TRIMMER

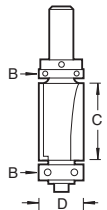
Allows templates to be placed either on top or the bottom of the material, for ease of routing.



Always restrict overlap of material to a max. of 3mm.



| D mm | C mm | B mm | Product Ref. | Shank Dia. 1/2" |
|------|------|------|--------------|-----------------|
| 19.1 | 50.0 | 19.1 | C199 | £51.48 |



Ref. C166B

BEARING GUIDED 2° & 3° DOOR LEADING EDGE

2° or 3° undercut shank mounted bearing guided router cutters for routing a leading edge on doors to allow a tight fit against jamb.

NEW

Ref. C214

Ref. C214B



Door edge



2° or 3°

| A Deg. | D mm | C mm | B mm | Product Ref. | Shank Dia. 8mm | Shank Dia. 1/2" |
|--------|------|------|------|--------------|----------------|-----------------|
| 93° | 24.2 | 50.0 | 19.1 | C214 | - | £70.93 |
| 93° | 19.3 | 38.1 | 16.0 | N C214B | £38.35 | - |
| 92° | 22.5 | 50.0 | 19.1 | N C214A | - | £57.89 |

