

# CONTRACTOR LARGE LOCK JIG

**For routing the faceplate and mortise for larger locks quickly and accurately.**

- Suitable for DDA (Disability Discrimination Act) style locks. 20mm or 24mm x 235mm radius end face plate and 17mm x 170mm mortise.
- Adaptor plate included to allow smaller templates (239mm x 60mm) to be fitted (as supplied with standard Lock Jig opposite).
- Suitable for doors 34mm to 58mm thick.
- An auger bit and drill is required to complete deep mortises.

**LOCK/JIG/A £162.32**

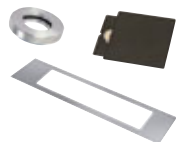


**COMPATIBILITY**  
www.trend-uk.com/compatibility



#### INCLUDES:

- 1 x Guide bush collar
- 2 x Faceplate templates
- 1 x Mortise template
- 1 x Template adaptor



#### TEMPLATES INCLUDED:

Faceplate Dimensions:	Template
20 x 235mm (radiused ends)	1
24 x 235mm (radiused ends)	2

Mortise Dimensions:	Template
17 x 170mm	A

#### OPTIONAL

ACCESSORIES:	Product Ref.	Price
<b>Guide bushes</b>		
Standard 30mm	GB30	£9.14
Special 16mm	GB160	£11.92

#### Guide bush collar

Fits to GB160 as supplied with the Trend Hinge Jig to give 30mm OD. Secures to bush with integral ring.

GB/COLL/1630 £7.02

<b>Universal sub-base</b>	UNIBASE	£20.51
---------------------------	---------	--------

#### Recommended 1/2" shank cutters

12mmØ x 115mm overall length. For up to 70mm deep mortise depending on plunge of router & use of Unibase etc.

Professional	3/75X1/2TC	£45.25
Trade Range	TR37X1/2TC	£36.88
CraftPro	C172DX1/2TC	£25.79

#### Recommended 1/4" shank cutters

12mmØ x 70mm overall length. Deepening of mortise with auger bit required.

Professional	3/8LX1/4TC	£30.30
CraftPro	C019AX1/4TC	£20.25

#### SPARE TEMPLATES:

	Product Ref.	Price
Size 17mm x 170mm mortise	WP-LOCK/A/T/A	£10.59
Size 20mm x 235mm faceplate (RE)	WP-LOCK/A/T/1	£10.59
Size 24mm x 235mm faceplate (RE)	WP-LOCK/A/T/2	£10.59

#### ACCESSORY TEMPLATES:

	Product Ref.	Price
Size 15mm x 40mm template	WP-LOCK/A/T10	£14.49
Size 15.5mm x 115mm template	WP-LOCK/A/T12	£14.49
Size 15.5mm x 225mm template	WP-LOCK/A/T13	£14.49
Size 15.5mm x 235mm template	WP-LOCK/A/T14	£14.49
Size 17mm x 180mm template	WP-LOCK/A/T15	£14.49
Size 18mm x 85mm template	WP-LOCK/A/T16	£14.49
Size 18mm x 176mm template	WP-LOCK/A/T17	£14.49
Size 18mm x 180mm template	WP-LOCK/A/T18	£14.49
Size 19mm x 100mm template	WP-LOCK/A/T19	£14.49
Size 19mm x 113mm template	WP-LOCK/A/T20	£14.49
Size 19mm x 235mm template	WP-LOCK/A/T23	£14.49
Size 20mm x 153mm template	WP-LOCK/A/T24	£14.49
Size 20mm x 234mm template (RE)	WP-LOCK/A/T27	£14.49
Size 20mm x 235mm template	WP-LOCK/A/T28	£14.49
Size 20mm x 240mm template (RE)	WP-LOCK/A/T29	£14.49
Size 22mm x 125mm template	WP-LOCK/A/T33	£14.49
Size 22mm x 165mm template	WP-LOCK/A/T30	£14.49
Size 22mm x 224mm template	WP-LOCK/A/T31	£14.49
Size 22mm x 225mm template (RE)	WP-LOCK/A/T34	£14.49
Size 22.4mm x 235mm template	WP-LOCK/A/T35	£14.49
Size 22.5mm x 77mm template	WP-LOCK/A/T36	£14.49
Size 24mm x 235mm template	WP-LOCK/A/T44	£14.49
Size 25.4mm x 235mm template	WP-LOCK/A/T49	£14.49

(RE) = radiused ends

## HOW BOTH LOCK JIGS WORK:

### TEMPLATES

Both the mortise and the faceplate are selected to suit the size of the lock. Templates are held by two powerful magnets.



### COMPATIBILITY

Must be used with a 30mm x 6mm spigot guide bush and 12mm diameter cutter. For deep mortises a heavy duty router should be used with the long reach cutter.



### HINGE AND LOCK OPERATIONS

If a medium duty router is to be used, then full mortises are not possible and a suitable sized auger bit in a drill will be required. If the Lock Jig is to be used in conjunction with the Trend Hinge Jig, then the collar can be used to bush out the 16mm guide bush to 30mm.



### FINAL APPLICATION

Mark the appropriate position for the lock and centralise on the door using the centre line notches within the jig aperture. The jig can then be clamped to the door. In most applications, the door will be held secured on its side.

