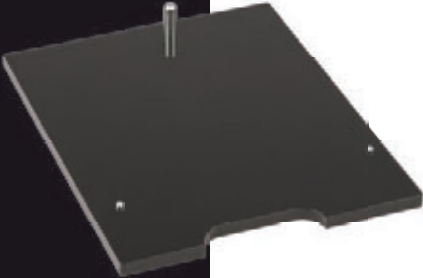




## CRB Edge Trimming Base CRB/TB

Please read carefully before use



INST/CRB/TB

## CRB EDGE TRIMMING BASE ACCESSORY

### REF. CRB/TB

Thank you for purchasing this Trend accessory, which should give lasting performance if used in accordance with these instructions.

The following symbols are used throughout these instructions.



Denotes risk of personal injury, loss of life or damage to the tool in case of non-observance of the instructions.



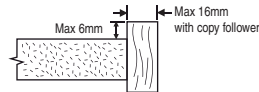
Refer to the instruction manual of your power tool.

This accessory must not be put into service until it has been established that the power tool to be connected to this unit is in compliance with 2006/42/EC (identified by the CE marking on the power tool).

### INTENDED USE

The accessory has been designed for use with the Trend Combination Router Base (CRB), a router and a suitable router cutter to flush trim hardwood edging.

Lipping width with copy follower	max. 16mm
Lipping width without copy follower	max. 25mm
Lipping projection	max. 6mm
Cutter diameter	max. 25mm



### SAFETY

Please read and understand the safety points at the end of this instruction as well as the power tool instructions before use.

**PLEASE KEEP THESE INSTRUCTIONS IN A SAFE PLACE.**

The attention of UK users is drawn to The Provision and Use of Work Equipment Regulations 1998, and any subsequent amendments.

Users should also read the HSE/HSC Safe Use of Woodworking Machinery Approved Code of Practice and Guidance Document and any amendments.

Users must be competent in using woodworking equipment before using our products.

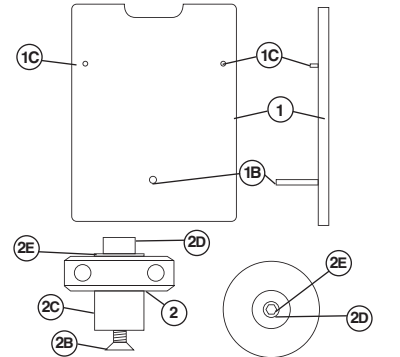
Attention should be made to the HSE's Safe Use of Vertical Spindle Moulding machines Information Sheet No. 18 and any revisions.

### ITEMS REQUIRED

- Combination Router Base (CRB).
- Router with suitable collet fitted.
- Flat head screwdriver.
- Hand tools.
- Suitable router cutter (recommended 3 flute trimmer Ref. 37/1X1/4TC).

### ITEMS ENCLOSED & DESCRIPTION OF PARTS

1. Riser Pad - Attaches to the CRB baseplate allowing suitable clearance for the router cutter to trim the edging.
- 1B. Pad Dowel - Secures the riser pad to the the CRB baseplate via the bridge pinch-bolt hole.
- 1C. Pad Pins x 2 - Locate into the CRB baseplate preventing the riser pad from skewing during use.
2. Bearing Guided Copy Follower - Attaches to the CRB baseplate guiding the cutter along the edge of the workpiece.
- 2B. Slot Head Screw - Fixes the guide bearing to the CRB baseplate.
- 2C. Pillar - Retains the bearing and acts as the axis point for the bearing.
- 2D. Hex Socket Head Screw - Fixes the bearing to the pillar.
- 2E. Washer - Holds the bearing in place allowing rotation.



(not to scale)

### ASSEMBLY

#### Fitting the Edge Trimming Kit to the CRB

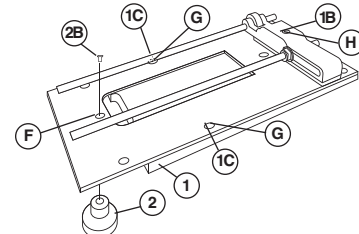
Before use please remove the protective film from the CRB acrylic base.

- Remove the router from the CRB and place to one side.
- Loosen the CRB's bridge pinch-bolt.



**Remove the offset handle or anti-tilt leg if they are fitted in the bridge.**

- Fit the bearing guided copy follower assembly to the underside of the CRB baseplate via the countersunk hole using the slot head screw.
- Once fitted into position place the riser pad onto a flat surface so the guide bearing hangs over the edge allowing the riser pad to sit flat on the surface.
- Align the CRB baseplate over the riser pad so that the pad dowel locates directly into the bridge pinch-bolt hole and the pad pins locate directly under the baseplates countersunk holes.
- Then gently lower the CRB onto the riser pad.
- Once in place tighten the bridge pinch-bolt against the pad dowel to secure riser pad firmly in position.
- The CRB and edge trimming kit are now ready for use.



**trend**<sup>®</sup>  
routing technology

## ENVIRONMENTAL PROTECTION



Recycle raw materials instead of disposing as waste.

Packaging should be sorted for environmental-friendly recycling.

The product and its accessories at the end of its life should be sorted for environmental-friendly recycling.

## GUARANTEE

All Trend products are guaranteed against any defects in either workmanship or material, except products that have been damaged due to improper use or maintenance.

© Trend Machinery & Cutting Tools Ltd. 2012 E&OE

® All trademarks acknowledged

## Trend Machinery & Cutting Tools Ltd.

Odhams Trading Estate St Albans Road

Watford WD24 7TR England

Tel: 0044(0)1923 249911

technical@trendm.co.uk

www.trend-uk.com



RS 28982  
Stockholding  
& Supply



RECYCLABLE



5 027654 555712 >

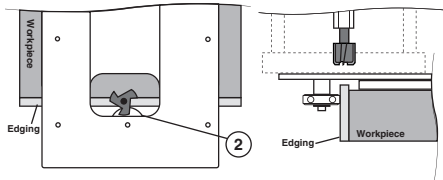
## Hardwood & Iron-on Edging Trim Instructions



The CRB fitted with the edge trimming kit is a fast and accurate method of consistently trimming solid hardwood and iron on edging flush with its core panel.

### Positioning of the Router Cutter

- Fit the edge trimming kit to the CRB as detailed above.
- Slide the router onto the CRB guide rods and butt the router base edge up against the bridge.
- Position the CRB baseplate so that the guide bearing over hangs the workpiece and butts up against the workpiece edging.
- Slide the router forward so that the router cutter can safely pass through the CRB riser pad letterbox and position the router cutter directly over the edging to be routed.
- Lock the router pinch-bolt on the CRB's adjuster rod and micro adjuster if required.



Always isolate router from power supply before making any adjustments.



If the edging width exceeds 16mm remove the bearing guided copy follower assembly and take multiple routing passes. The first pass should slightly overlap the core board, for subsequent passes incrementally work outwards over the outside edge of the hardwood lipping until flush with the core board.

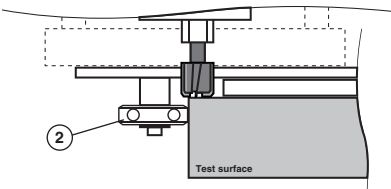
### Setting the Router Cutter Depth

- Take the CRB router assembly and position onto a flat surface with the guide bearing butted against the edge.



Setting the depth of the router cutter should be carried out on a separate work surface to avoid damaging your work piece.

- Lower the router cutter so that the cutter tip just makes contact with the surface and lock the router cutter height in.
- Test the router cutter depth by sliding the CRB router assembly over a flat waste board. The router cutter should just make a slight mark - but not actually remove any material from the surface of the waste board.



## OPERATION

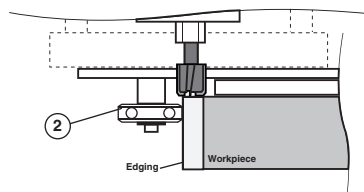


### Flush Trimming the Edging



- Return the CRB router assembly so that its resting on the end of the workpiece.
- Plug the router into the power supply.
- Turn the router on and feed the CRB router assembly along the length of the edging, ensure the guide bearing remains in contact with the board edge at all times.
- The edging should now be flush with the workpiece surface. At the end of the router pass, turn off the router.

After use remove accessory and store carefully.



## MAINTENANCE

Please use only Trend original spare parts.

Continual satisfactory operation depends upon proper tool care and regular cleaning.

### Cleaning

- Regularly clean accessory with a soft cloth.

### Lubrication

- Your accessory requires no additional lubrication.

### Storage

- Return accessory to its packaging after use.

## Safety Points

- Disconnect power tool and attachment from power supply when not in use, before servicing, when making adjustments and when changing accessories such as cutters. Ensure switch is in "off" position and cutter has stopped rotating.
- Read and understand instructions supplied with power tool, attachment and cutter.
- Current Personal Protective Equipment (PPE) for eye, ear and respiratory protection must be worn. Keep hands, hair and clothes clear of the cutter.
- Before each use check cutter is sharp and free from damage. Do not use if cutter is dull, broken or cracked or if any damage is noticeable or suspected.
- The maximum speed (nmax) marked on tool or in instructions or on packaging shall not be exceeded. Where stated, the speed range should be adhered to.
- Insert the shank into the router collet at least all the way to the marked line indicated on the shank. This ensures at least 3/4 of shank length is held in collet. Ensure clamping surfaces are clean.
- Check all fixing and fastening nuts, bolts and screws on power tool, attachment and cutting tools are correctly assembled, tight and to correct torque setting before use.
- Ensure all visors, guards and dust extraction is fitted.
- The direction of routing must always be opposite to the cutter's direction of rotation.
- Do not switch power tool on with the cutter touching the workpiece.
- Trial cuts should be made in waste material before starting any project.
- Repair of tools is only allowed according to tool manufacturers instructions.
- Do not take deep cuts in one pass, take shallow passes to reduce the side load applied to the cutter.

Please see [www.trend-uk.com/safety](http://www.trend-uk.com/safety) for more safety advice.



Our policy of continuous improvements mean that specifications may change without notice. Trend Machinery & Cutting Tools Ltd. cannot be held liable for any material rendered unusable, or for any form of consequential loss.