



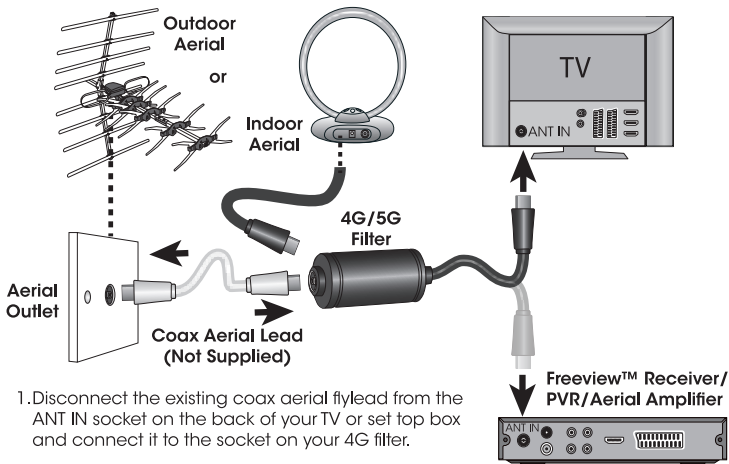
# 4G & 5G TV Filter

Freq. Range 5 - 694 MHz, TV CH 21-49

19165QR User Guide

The SLx 4G/5G filter has been designed specifically to filter out interference caused by 4G mobile phone signals transmitted around the 800MHz bandwidth.

The filter is connected between the TV aerial (indoor or outdoor) and a TV, set top box or aerial amplifier.



1. Disconnect the existing coax aerial flylead from the ANT IN socket on the back of your TV or set top box and connect it to the socket on your 4G filter.
2. Then connect the coax plug on the 4G filter to the ANT IN socket on the back of your TV/set top box.

## Specification:

Pass Band: **5-782MHz  $\leq 4.5$ dB**

Filter Band (Rejection): **791-1000MHz  $\geq 16$ dB**

Impedance: Input: **75 $\Omega$**  Output: **75 $\Omega$**



Customer Careline: **08457 573 479**

(Local Rate - UK Only)

Technical Support:

[www.slxtechnology.com/support](http://www.slxtechnology.com/support)

© Philex Electronic Ltd. 2021. vb1.1



Waste electrical and electronic products must not be disposed of with household waste. Please recycle where facilities exist. Check with your Local Authority for recycling advice.

UK Distributor: Philex Electronic Ltd,  
Philex House, London Road,  
Bedford, MK42 0NX, UK.

EU Distributor: Philex Electronic Ireland Ltd.,  
Robwyn House, Corrintra, Castleblayney,  
Co. Monaghan, A75 YX76, Ireland.