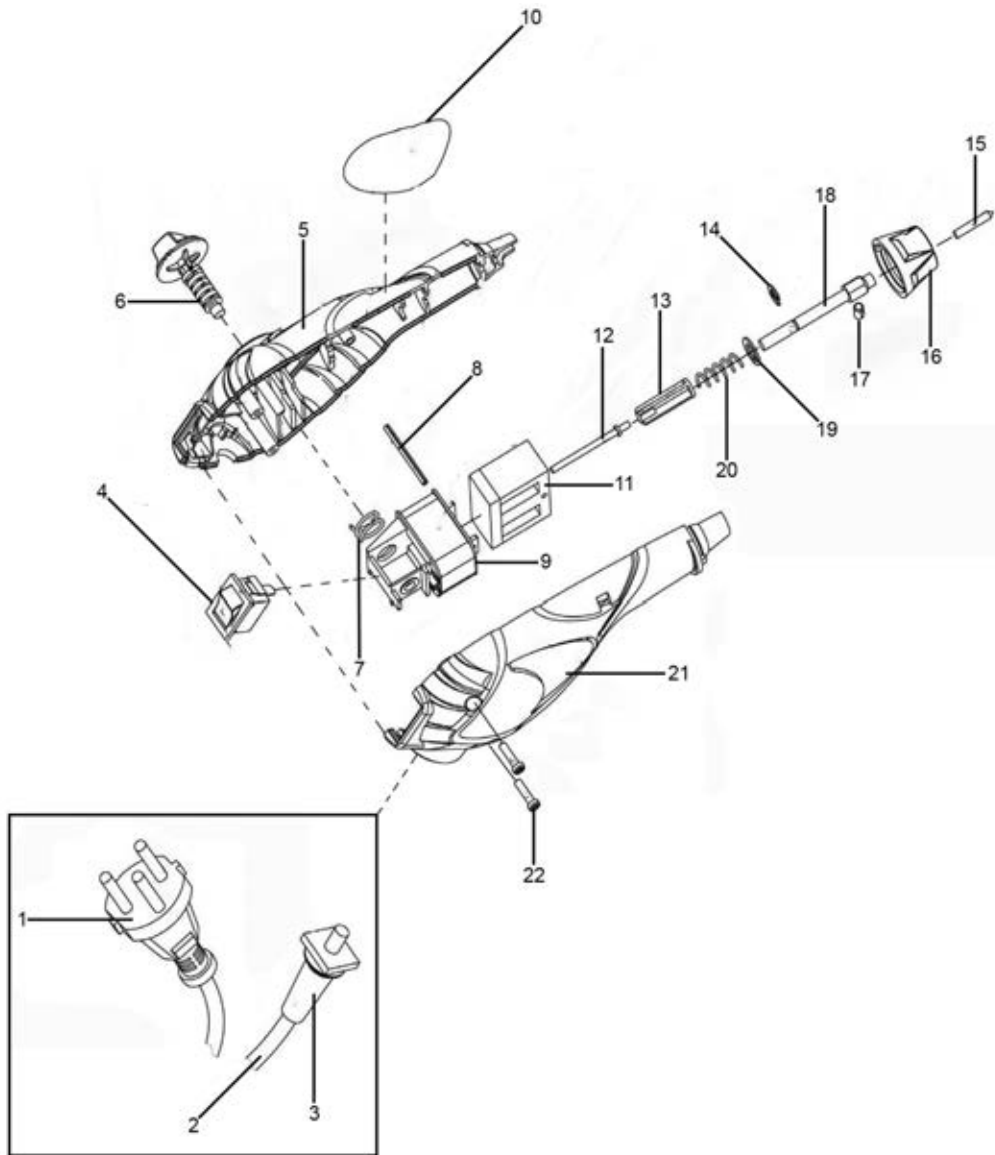


Parts Information:
Tungsten Carbide Tipped Tool Engraver
13W 230V
Model No: E541



| Item | Part No. | Description |
|------|-----------|----------------|
| 1 | E541.01 | Plug |
| 2 | MC2CX0.75 | Mains Cable |
| 3 | E541.03 | Cord Cleave |
| 4 | E541.04 | Switch, Rocker |
| 5 | E541.05 | Housing, Left |
| 6 | E541.06 | Lock Button |
| 7 | E541.07 | Spring |
| 8 | E541.08 | Spindle Lock |
| 9 | E541.09 | Stator Support |
| 10 | E541.10 | Top Cover |
| 11 | E541.11 | Stator |
| 12 | E541.12 | Steel Pin |

| Item | Part No. | Description |
|------|----------|--------------------------|
| 13 | E541.13 | Pin Cover |
| 14 | E541.14 | Lock Ring |
| 15 | E541.15 | Housing Cap |
| 16 | E541.16 | Tip |
| 17 | E541.17 | Lock screw M4 x 6mm |
| 18 | E541.18 | Shaft |
| 19 | E541.19 | Spacer |
| 20 | E541.20 | Spring |
| 21 | E541.21 | Housing, Right |
| 22 | E541.22 | Screw |
| -- | E541.LP | Letter Plate (Not Shown) |

NOTE: It is our policy to continually improve products and as such we reserve the right to alter data, specifications and component parts without prior notice. There may be alternative versions of this product, please contact us should you require this information.

IMPORTANT: No liability is accepted for incorrect use of product. Spare parts must be fitted by a competent person

WARRANTY: Guarantee is 12 months from purchase date, proof of which will be required for any claim.