

NOTE: It is our policy to continually improve products and as such we reserve the right to alter data, specifications and component parts without prior notice. There may be alternative versions of this product, please contact us should you require this information.

IMPORTANT: No liability is accepted for incorrect use of product. Spare parts must be fitted by a competent person

WARRANTY: Guarantee is 12 months from purchase date, proof of which will be required for any claim.



Parts Information:
Pressure Washer 150bar 360L/hr 4hp
Petrol
Model No: PWM1300.V2

Item	Part No.	Description
1	PWM1300.V2-01	Engine
2	PWM1300.V2-02	Frame
3	PWM1300.V2-03	Pneumatic Wheel 4"
4	PWM1300.V2-04	Wheel Shaft
5	NLN10.S	Nyloc Nut M10 Zinc
6	FWM8.S	Flat Washer M8 Zinc
7	PWM1300.V2-07	Injection Hose
8	PWM1300.V2-08	Injection Hose Filter
9	PWM1300.V2-09	High Pressure Pump
10	SCB850.SB	Socket Cap Bolt M8 x 50 Black
11	SCB860.SB	Socket Cap Bolt M8 X 60 Black
12	PWM1300.V2-12	Spacer for Rubber Foot
13	PWM1300.V2-13	Rubber Foot
14	PWM1300.V2-14	Protection Pad
15	NLN5.S	Nyloc Nut M5 Zinc

Item	Part No.	Description
16	FWM5.S	Flat Washer M5 Zinc
17	MSP412.SB	Machine Screw Pan Head Phillips M4x12mm
18	PWM1300.V2-18	Buckle
19	PWDM3600.01	Screw (M5x42)
20	PWM1300.V2-20	Rear Panel
21	PWM1300.V2-21	Hose Hook
22	PWM1300.V2-22	High Pressure Hose
23	PWM1300.V2-23	Locating Pin
24	PWM1300.V2-24	Handle Sleeve
25	PWM1300.V2-25	Grip Assembly
26	PWM1300.V2-26	End Plug
27	PWM1300.V2-27	High Pressure Gun
28	NLN8.S	Nyloc Nut M8 Zinc
29	PWM1300.V2-29	Upper Handle
30	PWM1300.V2-30	Bypass Valve Cap

NOTE: It is our policy to continually improve products and as such we reserve the right to alter data, specifications and component parts without prior notice. There may be alternative versions of this product, please contact us should you require this information.

IMPORTANT: No liability is accepted for incorrect use of product. Spare parts must be fitted by a competent person

WARRANTY: Guarantee is 12 months from purchase date, proof of which will be required for any claim.

Sealey Group, Kempson Way, Suffolk Business Park, Bury St Edmunds, Suffolk. IP32 7AR



01284 757500



01284 703534

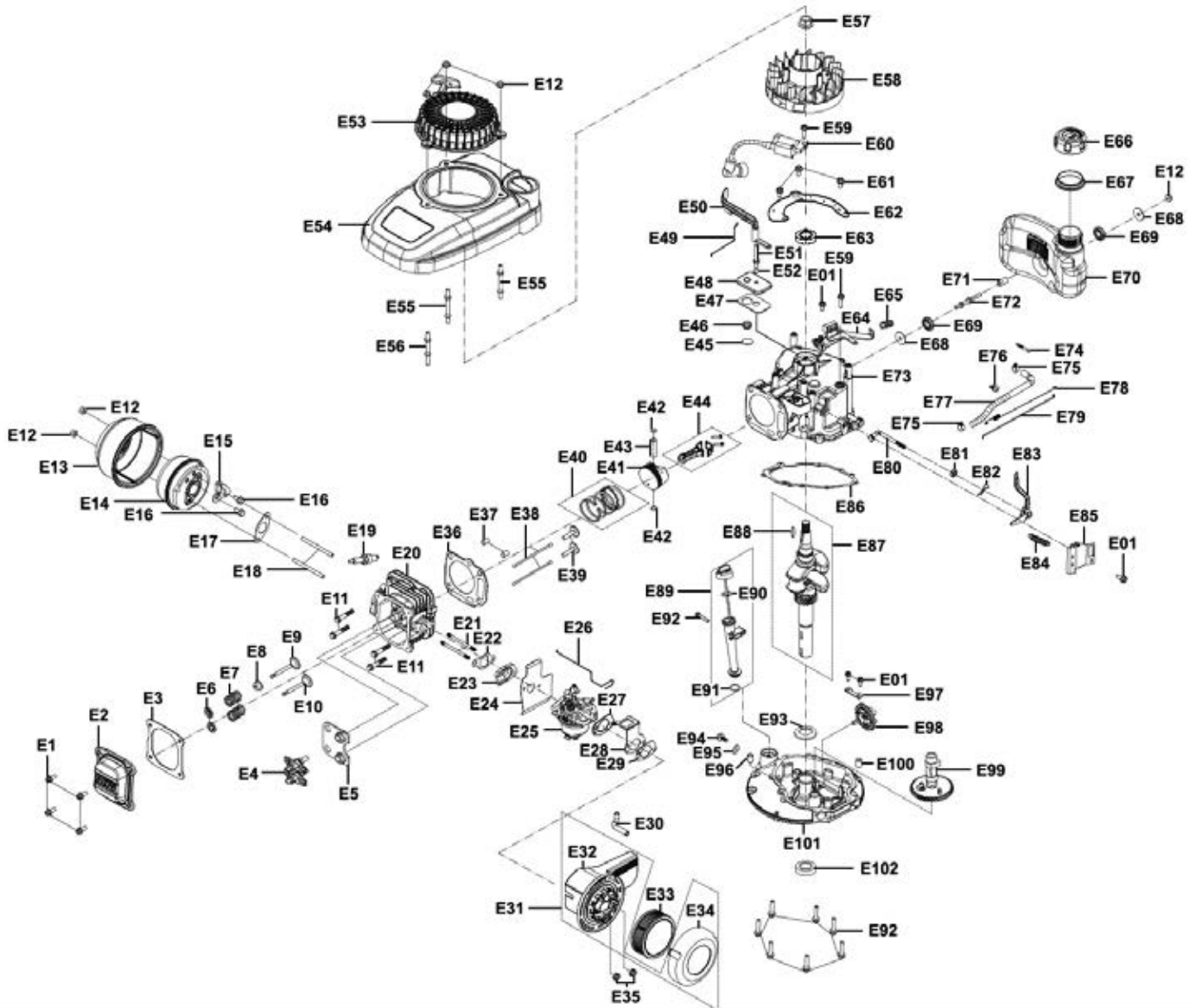


sales@sealey.co.uk



www.sealey.co.uk

Parts Information:
**Pressure Washer 150bar 360L/hr 4hp
 Petrol
 Model No: PWM1300.V2**



Item	Part No.	Description
E01	SFS614.S	Hex Head Flange Bolt M6 X 14 Zinc
E02	PWM1300.V2-E02	Valve Cover
E03	PWM1300.V2-E03	Valve Cover Gasket
E04	PWM1300.V2-E04	Rocker Arm Assembly
E05	PWM1300.V2-E05	Rocker Arm Base
E06	PWM1300.V2-E06	Valve Spring Seat
E07	PWM1300.V2-E07	Valve Spring
E08	PWM1300.V2-E08	Intake Valve Seal
E09	PWM1300.V2-E09	Intake Valve
E10	PWM1300.V2-E10	Exhaust Valve
E11	PWM1300.V2-E11	Cylinder Head Bolt M8x54

Item	Part No.	Description
E12	SN6.S	Steel Nut M6 Zinc
E13	PWM1300.V2-E13	Muffler Guard
E14	PWM1300.V2-E14	Muffler
E15	PWM1300.V2-E15	Thermal Switch
E16	SFS612.S	Hex Head Flange Bolt M6 X 12 Zinc
E17	PWM1300.V2-E17	Muffler Gasket
E18	PWM1300.V2-E18	Stud Bolt M6x76
E19	PWM1300.V2-E19	Spark Plug
E20	PWM1300.V2-E20	Cylinder Head
E21	PWM1300.V2-E21	Stud Bolt M6x87
E22	PWM1300.V2-E22	Gasket, Carburetor Insulator

NOTE: It is our policy to continually improve products and as such we reserve the right to alter data, specifications and component parts without prior notice. There may be alternative versions of this product, please contact us should you require this information.

IMPORTANT: No liability is accepted for incorrect use of product. Spare parts must be fitted by a competent person

WARRANTY: Guarantee is 12 months from purchase date, proof of which will be required for any claim.



Parts Information:
Pressure Washer 150bar 360L/hr 4hp
Petrol
Model No: PWM1300.V2

Item	Part No.	Description
E23	PWM1300.V2-E23	Insulator
E24	PWM1300.V2-E24	Gasket, Carburetor
E25	PWM1300.V2-E25	Carburetor
E26	PWM1300.V2-E26	Choke Lever
E27	PWM1300.V2-E27	Gasket, Air Filter
E28	PWM1300.V2-E28	Choke Lever Rack
E29	PWM1300.V2-E29	Gasket, Air Filter
E30	PWM1300.V2-E30	Breather Hose
E31	PWM1300.V2-E31	Air Filter Assembly
E32	PWM1300.V2-E32	Air Filter Base
E33	PWM1300.V2-E33	Air Filter Element
E34	PWM1300.V2-E34	Air Filter Cover
E35	SN6.S	Steel Nut M6 Zinc
E36	PWM1300.V2-E36	Gasket, Cylinder Head
E37	PWM1300.V2-E37	Pin 10x16
E38	PWM1300.V2-E38	Push Rod
E39	PWM1300.V2-E39	Push Rod Seat
E40	PWM1300.V2-E40	Piston Ring Set
E41	PWM1300.V2-E41	Piston
E42	PWM1300.V2-E42	Circlip for Piston Pin
E43	PWM1300.V2-E43	Piston Pin
E44	PWM1300.V2-E44	Connecting Rod Assembly
E45	PWM1300.V2-E45	Breather Valve
E46	PWM1300.V2-E46	Valve Spring (One-way)
E47	PWM1300.V2-E47	Gasket, Oil Filter
E48	PWM1300.V2-E48	Breather Cover
E49	PWM1300.V2-E49	Choke Lever
E50	PWM1300.V2-E50	Shield
E51	PWM1300.V2-E51	Stud
E52	PWM1300.V2-E52	Washer 6x1x18
E53	PWM1300.V2-E53	Recoil Starter
E54	PWM1300.V2-E54	Blower Housing
E55	PWM1300.V2-E55	Stud Bolt M6x75
E56	PWM1300.V2-E56	Stud Bolt M6x73
E57	SN14.S	Steel Nut M14 Zinc
E58	PWM1300.V2-E58	Flywheel
E59	SFS625.S	Hex Head Flange Bolt M6 X 25 Zinc
E60	PWM1300.V2-E60	Ignition Module
E61	SFS610.S	Hex Head Flange Bolt M6 X 10 Zinc
E62	PWM1300.V2-E62	Shield

Item	Part No.	Description
E63	PWM1300.V2-E63	Oil Seal 20x42x7
E64	PWM1300.V2-E64	Brake Assembly
E65	PWM1300.V2-E65	Brake Spring
E66	PWM1300.V2-E66	Fuel Cap
E67	PWM1300.V2-E67	Fuel Cap Seal
E68	PWM1300.V2-E68	Washer 6.5x1.5x25
E69	PWM1300.V2-E69	Fuel Tank Seal
E70	PWM1300.V2-E70	Fuel Tank
E71	PWM1300.V2-E71	Bush 6.5x10x19
E72	PWM1300.V2-E72	Bolt Stud M6x68
E73	PWM1300.V2-E73	Crankcase
E74	PWM1300.V2-E74	Fuel Filter
E75	PWM1300.V2-E75	Fuel Hose Clamp
E76	PWM1300.V2-E76	Fuel Hose Clip
E77	PWM1300.V2-E77	Fuel Hose 6.3x12.5x260
E78	PWM1300.V2-E78	Idle Spring
E79	PWM1300.V2-E79	Throttle Linkage
E80	PWM1300.V2-E80	Governor Gear Shaft
E81	PWM1300.V2-E81	Oil Seal 6x1x4
E82	PWM1300.V2-E82	Cotter Pin
E83	PWM1300.V2-E83	Governor Lever
E84	PWM1300.V2-E84	Governor Spring
E85	PWM1300.V2-E85	Governor Gear Bracket Assembly
E86	PWM1300.V2-E86	Gasket, Crankcase
E87	PWM1300.V2-E87	Crankshaft
E88	PWM1300.V2-E88	Woodruff Key
E89	PWM1300.V2-E89	Dipstick / Dipstick
E90	PWM1300.V2-E90	O-Ring for Dipstick
E91	PWM1300.V2-E91	O-Ring for Dipstick
E92	SFS630.S	Hex Head Flange Bolt M6 X 30 Zinc
E93	PWM1300.V2-E93	Washer 25.4x1x34
E94	PWM1300.V2-E94	Bolt M10x1.25x15
E95	PWM1300.V2-E95	Washer 10x1.5x16
E96	PWM1300.V2-E96	Pin 9x14
E97	PWM1300.V2-E97	Governor Gear Mounting Plate
E98	PWM1300.V2-E98	Governor Gear
E99	PWM1300.V2-E99	Camshaft
E100	PWM1300.V2-E100	Pin 7x14
E101	PWM1300.V2-E101	Crankcase Cover
E102	PWM1300.V2-E102	Oil Seal 25x38x7

NOTE: It is our policy to continually improve products and as such we reserve the right to alter data, specifications and component parts without prior notice. There may be alternative versions of this product, please contact us should you require this information.

IMPORTANT: No liability is accepted for incorrect use of product. Spare parts must be fitted by a competent person

WARRANTY: Guarantee is 12 months from purchase date, proof of which will be required for any claim.

Sealey Group, Kempson Way, Suffolk Business Park, Bury St Edmunds, Suffolk. IP32 7AR



01284 757500



01284 703534



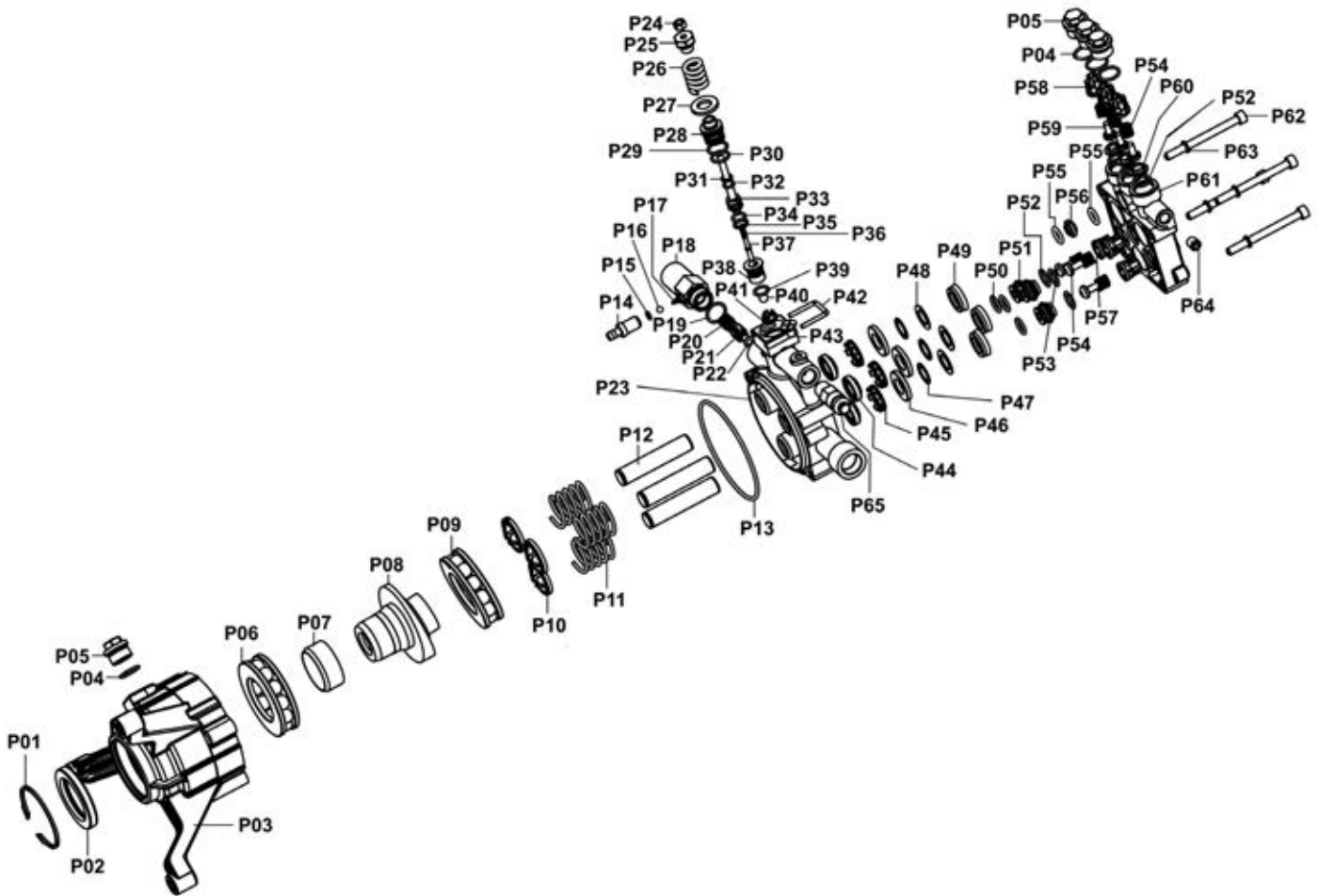
sales@sealey.co.uk



www.sealey.co.uk



Parts Information:
**Pressure Washer 150bar 360L/hr 4hp
 Petrol
 Model No: PWM1300.V2**



Item	Part No.	Description
P01	PWM1300.V2-P01	Spring Ring (A)
P02	PWM1300.V2-P02	Oil Seal
P03	PWM1300.V2-P03	Pump Housing
P04	PWM1300.V2-P04	O-Ring 15.4 x 1.8mm
P05	PWM1300.V2-P05	Plug Screw
P06	B/51307B	Bearing race 51307b
P07	PWM1300.V2-P07	Steel Ring
P08	PWM1300.V2-P08	Cam
P09	B/51307A	Bearing Race 51307A
P10	PWM1300.V2-P10	Spring Seat
P11	PWM1300.V2-P11	Piston Spring
P12	PWM1300.V2-P12	Piston
P13	PWM1300.V2-P13	O-Ring 87 x 2.5mm

Item	Part No.	Description
P14	PWM1300.V2-P14	Check Valve Body
P15	PWM1300.V2-P15	O-Ring 4 x 1.5mm
P16	SB-5.0	Steel Ball 5.0mm
P17	PWM1300.V2-P17	Cone Spring
P18	PWM1300.V2-P18	Water Outlet Connector
P19	PWM1300.V2-P19	O-Ring 15 x 1.8mm
P20	PWM1300.V2-P20	Non-Return Valve Spring
P21	PWM1300.V2-P21	Non-Return Valve Core
P22	PWM1300.V2-P22	O-Ring 5 x 2mm
P23	PWM1300.V2-P23	Pump Seat
P24	SN5.S	Steel Nut M5 Zinc
P25	PWM1300.V2-P25	Adjustable Pressure Nut
P26	PWM1300.V2-P26	Adjustable Pressure Spring

NOTE: It is our policy to continually improve products and as such we reserve the right to alter data, specifications and component parts without prior notice. There may be alternative versions of this product, please contact us should you require this information.

IMPORTANT: No liability is accepted for incorrect use of product. Spare parts must be fitted by a competent person

WARRANTY: Guarantee is 12 months from purchase date, proof of which will be required for any claim.

Sealey Group, Kempson Way, Suffolk Business Park, Bury St Edmunds, Suffolk. IP32 7AR



01284 757500



01284 703534



sales@sealey.co.uk



www.sealey.co.uk



Parts Information:
Pressure Washer 150bar 360L/hr 4hp
Petrol
Model No: PWM1300.V2

Item	Part No.	Description
P27	PWM1300.V2-P27	Adjustable Pressure Gasket
P28	PWM1300.V2-P28	Bypass Valve Cover
P29	PWM1300.V2-P29	O-Ring 14 x 1.8mm
P30	PWM1300.V2-P30	O-Ring 124 x 1.8mm
P31	PWM1300.V2-P31	Split Ring 'A' (small)
P32	PWM1300.V2-P32	O-Ring 6.07 x 1.8mm
P33	PWM1300.V2-P33	Bypass Valve Core
P34	PWM1300.V2-P34	O-Ring 8.6 x 1.8mm
P35	PWM1300.V2-P35	Split Ring 'B' (Large)
P36	PWM1300.V2-P36	Bypass Valve Core Spring
P37	PWM1300.V2-P37	Top Pin
P38	PWM1300.V2-P38	Upper Seat
P39	PWM1300.V2-P39	O-Ring 9.5 x 1.8mm
P40	SB-7.0	Steel Ball 7.0mm
P41	PWM1300.V2-P41	Steel Ball Seat
P42	PWM1300.V2-P42	U-Pin
P43	PWM1300.V2-P43	Pump Body Screw M6x10
P44	PWM1300.V2-P44	Water Seal
P45	PWM1300.V2-P45	Support Ring
P46	PWM1300.V2-P46	Brass Ring

Item	Part No.	Description
P47	PWM1300.V2-P47	Small Gasket
P48	PWM1300.V2-P48	Gasket Ring
P49	PWM1300.V2-P49	Y-Seal
P50	PWM1300.V2-P50	O-Ring 11.1 x 2mm
P51	PWM1300.V2-P51	Water Inlet Support
P52	PWM1300.V2-P52	O-Ring 12.4 x 1.8mm
P53	PWM1300.V2-P53	Water Inlet Check Valve Core
P54	PWM1300.V2-P54	Return Spring
P55	PWM1300.V2-P55	O-Ring 10 x 2.65mm
P56	PWM1300.V2-P56	Pressure Gasket
P57	PWM1300.V2-P57	Water Inlet Check Valve Support
P58	PWM1300.V2-P58	Water Outlet Check Valve Support
P59	PWM1300.V2-P59	Check Valve Core
P60	PWM1300.V2-P60	Support Gasket
P61	PWM1300.V2-P61	Pump Head
P62	SCB670.SB	Socket Cap Bolt M6 x 70 Black
P63	SWM6.SB	Spring Washer M6 Black
P64	PWM1300.V2-P64	Grub Screw
P65	PWM1300.V2-P65	Thermal Protector

NOTE: It is our policy to continually improve products and as such we reserve the right to alter data, specifications and component parts without prior notice. There may be alternative versions of this product, please contact us should you require this information.

IMPORTANT: No liability is accepted for incorrect use of product. Spare parts must be fitted by a competent person

WARRANTY: Guarantee is 12 months from purchase date, proof of which will be required for any claim.

Sealey Group, Kempson Way, Suffolk Business Park, Bury St Edmunds, Suffolk. IP32 7AR



01284 757500



01284 703534



sales@sealey.co.uk



www.sealey.co.uk