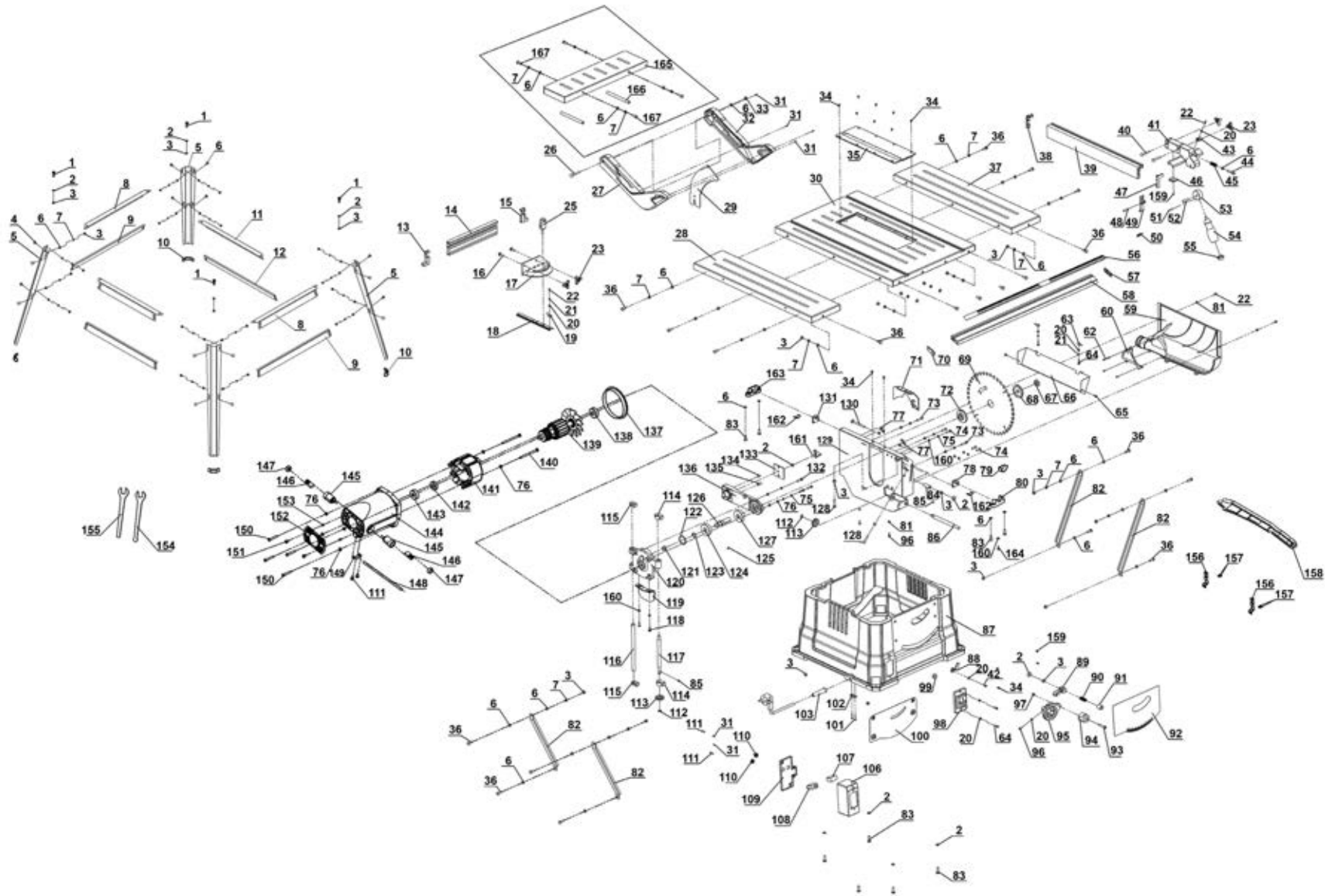




Parts Information:
Table Saw Ø254mm 230V
Model No: TS10P.V2





Parts Information:
Table Saw Ø254mm 230V
Model No: TS10P.V2

Item	Part No.	Description
1	SS625.S	Hex Head Set Screw M6 X 25 Zinc
2	FWM6.S	Flat Washer M6 Zinc
3	SN6.S	Steel Nut M6 Zinc
4	MSC612.SB	Csk Phillips Machine Screw M6 X 12 Black
5	TS10PV2-05	Stand Leg
6	FWM6.S	Flat Washer M6 Zinc
7	SWM6.S	Spring Washer M6 Zinc
8	TS10PV2-08	Cross Beam (A)
9	TS10PV2-09	Cross Beam (B)
10	TS10PV2-10	Stand Foot
11	TS10PV2-11	Cross Beam (C)
12	TS10PV2-12	Cross Beam (D)
13	TS10PV2-13	End Cap
14	TS10PV2-14	Mitre Fence
15	TS10PV2-15	End Cap
16	CBN616.S	Coach Bolt M6 x 16mm
17	TS10PV2-17	Mitre Gauge
18	TS10PV2-18	Guide Bar
19	TS10PV2-19	Pointer
20	FWM4.S	Flat Washer M4
21	SWM4.S	Spring Washer M4 Zinc
22	MSP48.S	Machine Screw Pan Head Phillips M4 X 8 mm
23	TS10PV2-23	Locking Knob (A)
25	TS10PV2-25	Locking Knob (B)
27	TS10PV2-27	Blade Guard (Left)
28	TS10PV2-28	Extension Table (Left)
29	TS10PV2-29	Bracket
30	TS10PV2-30	Main Table
31	TS10PV2-31	Self Tapping Screw ST2.9 x 8
32	TS10PV2-32	Blade Guard (Right)
33	SN6.S	Steel Nut M6 Zinc
34	MSC48.S	Csk Phillips Machine Screw M4 X 8 Zinc
35	TS10PV2-35	Table Insert
36	SS616.S	Hex Head Set Screw M6 X 16 Zinc
37	TS10PV2-37	Extension Table (Right)
38	TS10PV2-38	End Cap
39	TS10PV2-39	Fence
40	CBN640.S	Coach Bolt M6 x 40mm
41	TS10PV2-41	Fence Guide Bracket
42	MSP410.S	Machine Screw Pan Head Phillips M4 X 10mm
43	TS10PV2-43	Pointer
44	TS10PV2-44	Bolt
45	TS10PV2-45	Spring

Item	Part No.	Description
46	TS10PV2-46	Sliding Bracket
47	TS10PV2-47	End Cap
48	TS10PV2-48	Pin
49	TS10PV2-49	Locking Jaw Face
50	TS10PV2-50	Locking Jaw Force Plate
51	TS10PV2-51	Split Pin 3 x 25
52	TS10PV2-52	Shaft Pin
53	TS10PV2-53	Locking Cam
54	TS10PV2-54	Handle Grip
55	TS10PV2-55	Handle Cap
56	TS10PV2-56	Table Scale Ruler
57	TS10PV2-57	Scale Ruler Pointer
58	TS10PV2-58	Table Scale Ruler Bracket
59	TS10PV2-59	Dust Chute
60	TS10PV2-60	Dust Chute Cover
62	TS10PV2-62	Self Tapping Screw ST2.9 x 9.5
63	TS10PV2-63	Pin
64	MSP414.S	Machine Screw Pan Head Phillips M4 X 14mm
65	SCB48.S	Socket Cap Bolt M4 x 8mm
66	TS10PV2-66	Following Plate
67	TS10PV2-67	Locking Nut M16 x 1.5
68	TS10PV2-68	Outer Blade Flange
69	TS10P.601	Blade Ø254mm x 2.8mm/Ø30mm Bore 40tpu
70	TS10PV2-70	End Plate
71	TS10PV2-71	Cover
72	TS10PV2-72	Inner Blade Flange
73	SCB525.S	Socket Cap Bolt M5 x 25mm
74	SCB516.S	Socket Cap Bolt M5 x 16mm
75	SWM5.S	Spring Washer M5 Zinc
76	FWM5.S	Flat Washer M5 Zinc
77	SCB56.SB	Socket Cap Bolt M5 x 6mm Black
78	TS10PV2-78	Tilting Bracket
79	TS10PV2-79	Stopper
80	TS10PV2-80	Tilting Bracket Seat
81	FWM4.S	Flat Washer M4
82	TS10PV2-82	Strut
83	SCB616.S	Socket Cap Bolt M6 x 16mm
84	TS10PV2-84	Sleeve
85	TS10PV2-85	Woodruff Key (4x8)
86	TS10PV2-86	Adjusting Rod
87	TS10PV2-87	Table Saw Base
88	TS10PV2-88	Pointer
89	TS10PV2-89	Locking Handle

NOTE: It is our policy to continually improve products and as such we reserve the right to alter data, specifications and component parts without prior notice. There may be alternative versions of this product, please contact us should you require this information.

IMPORTANT: No liability is accepted for incorrect use of product. Spare parts must be fitted by a competent person

WARRANTY: Guarantee is 12 months from purchase date, proof of which will be required for any claim.

Sealey Group, Kempson Way, Suffolk Business Park, Bury St Edmunds, Suffolk. IP32 7AR



01284 757500



01284 703534



sales@sealey.co.uk



www.sealey.co.uk



Parts Information:
Table Saw Ø254mm 230V
Model No: TS10P.V2

Item	Part No.	Description
90	TS10PV2-90	Locking Handle Spring
91	TS10PV2-91	Locking Handle End Cap
92	TS10PV2-92	Tilting Scale Face Plate
93	TS10PV2-93	Handwheel Knob Screw
94	TS10PV2-94	Handwheel Knob
95	TS10PV2-95	Handwheel
96	MSP412.S	Machine Screw Pan Head Phillips M4 X 12mm
97	SN5.S	Steel Nut M5 Zinc
98	TS10PV2-98	On/Off Switch (KJD22)
99	TS10PV2-99	Rubber Ring
100	TS10PV2-100	Face Plate
101	TS10PV2-101	Self Tapping Screw (ST3.5 x 19)
102	TS10PV2-102	Cable Clamp
103	TS10PV2-103	Cable Sleeve
106	TS10PV2-106	Switch Box
107	TS10PV2-107	Condensor 0.33uF
108	TS10PV2-108	Overload Switch
109	TS10PV2-109	Switch Box Cover
110	TS10PV2-110	Cable Gland
111	TS10PV2-111	Self Tapping Screw (ST4.2 x 12)
112	TS10PV2-112	Retaining Ring 10mm
113	TS10PV2-113	Beval Gear
114	TS10PV2-114	Stopper
115	TS10PV2-115	Guide Bracket
116	TS10PV2-116	Guide Rod
117	TS10PV2-117	Adjusting Rod
118	MSP512.S	Machine Screw Pan Head Phillips M5 X 12mm
119	TS10PV2-119	Cover Plate
120	TS10PV2-120	End Cover
121	TS10PV2-121	Bushing
122	TS10PV2-122	Retaining Ring 35mm
123	TS10PV2-123	Retaining Ring 16mm
124	TS10PV2-124	Gear
125	TS10PV2-125	Woodruff Key (5 x 6.5 x 16)
126	TS10PV2-126	Drive Shaft
127	B/6003	Bearing 6003
128	SCB625.S	Socket Cap Bolt M6 x 25mm
129	TS10PV2-129	Main Frame

Item	Part No.	Description
130	TS10PV2-130	Coach Bolt M6 x 65
131	TS10PV2-131	Angle Bracket
132	MSP520.S	Machine Screw Pan Head Phillips M5 X 20mm
133	TS10PV2-133	Cover Plate
134	TS10PV2-134	Pin (A)
135	TS10PV2-135	Pin (B)
136	TS10PV2-136	Gear Shaft Bracket
137	TS10PV2-137	Protection Ring
138	B/6201	Bearing 6201
139	TS10PV2-139	Rotor
140	TS10PV2-140	Self Tapping Screw ST5 x 60
141	TS10PV2-141	Stator
142	B/6001	Bearing 6001
143	TS10PV2-143	Rubber Washer
144	TS10PV2-144	Motor Housing
145	TS10PV2-145	Carbon Brush Holder
146	TS10PV2-146	Carbon Brush
147	TS10PV2-147	Carbon Brush Holder Cap
148	TS10PV2-148	Lead Wire
149	TS10PV2-149	Fix Plate
150	MSP525.S	Machine Screw Pan Head Phillips M5 X 25mm
151	MSP58.S	Machine Screw Pan Head Phillips M5 X 8mm
152	TS10PV2-152	End Plate for Motor Housing
153	GSM58.S	Grub screw M5x8 (single)
154	TS10PV2-154	Wrench (A)
155	TS10PV2-155	Wrench (B)
156	TS10PV2-156	Clip for Push Rod
157	TS10PV2-157	Self Tapping Screw ST3.2 x 10
158	TS10PV2-158	Push Rod
159	MSC48.S	Csk Phillips Machine Screw M4 X 8 Zinc
160	FWM5.S	Flat Washer M5 Zinc
161	TS10PV2-161	Knob for Gear Shaft Bracket
162	TS10PV2-162	Spacer
163	TS10PV2-163	Bracket
164	TS10PV2-164	Self Tapping Screw ST3.9 x 10
165	TS10PV2-165	Rear Extension Table
166	TS10PV2-166	Sleeve
167	SS612.S	Hex Head Set Screw M6 X 12 Zinc

NOTE: It is our policy to continually improve products and as such we reserve the right to alter data, specifications and component parts without prior notice. There may be alternative versions of this product, please contact us should you require this information.

IMPORTANT: No liability is accepted for incorrect use of product. Spare parts must be fitted by a competent person

WARRANTY: Guarantee is 12 months from purchase date, proof of which will be required for any claim.

Sealey Group, Kempson Way, Suffolk Business Park, Bury St Edmunds, Suffolk. IP32 7AR



01284 757500



01284 703534



sales@sealey.co.uk



www.sealey.co.uk