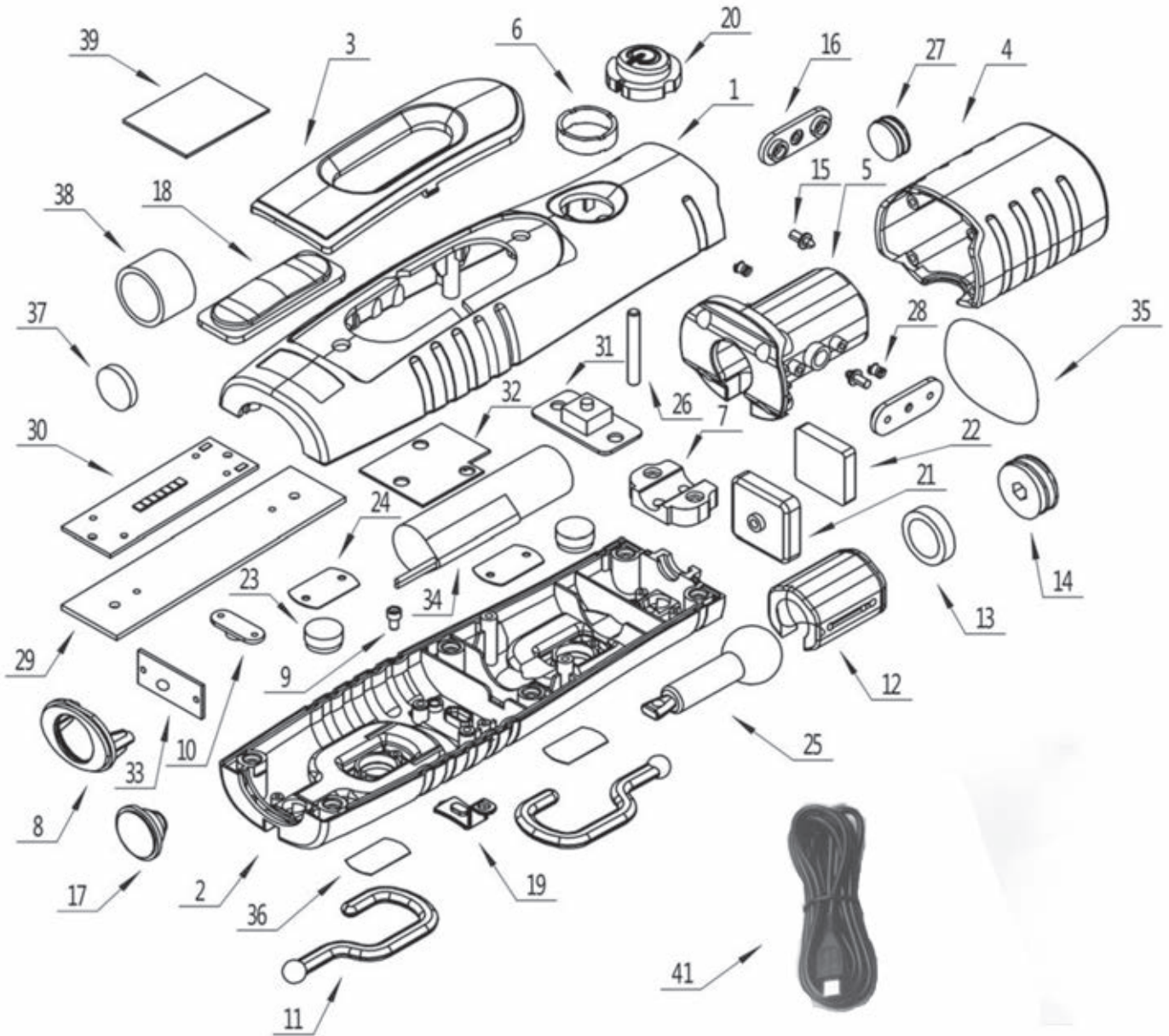




Parts Information:  
**Rechargeable 360° Inspection Lamp 7  
SMD + 3W LED Lithium-ion  
Model No: LED3602.V3 SERIES**



**NOTE:** It is our policy to continually improve products and as such we reserve the right to alter data, specifications and component parts without prior notice.

**IMPORTANT:** No liability is accepted for incorrect use of product.

**WARRANTY:** Guarantee is 12 months from purchase date, proof of which will be required for any claim.

**Sealey Group**, Kempson Way, Suffolk Business Park, Bury St Edmunds, Suffolk. IP32 7AR



01284 757500



01284 703534



sales@sealey.co.uk



www.sealey.co.uk



Parts Information:  
**Rechargeable 360° Inspection Lamp 7  
SMD + 3W LED Lithium-ion  
Model No: LED3602.V3 SERIES**

Item	Part No.	Description
1	LED3602.01	FRONT HOUSING 'BLACK' ( <b>LED3602 only</b> )
--	LED3602G.01	FRONT HOUSING 'GREEN' ( <b>LED3602G only</b> )
--	LED3602Y.01	FRONT HOUSING 'YELLOW' ( <b>LED3602Y only</b> )
--	LED3602R.01	FRONT HOUSING 'RED' ( <b>LED3602R only</b> )
--	LED3602B.01	FRONT HOUSING 'BLUE' ( <b>LED3602B only</b> )
--	LED3602CAMO01	FRONT HOUSING 'CAMOUFLAGE' ( <b>LED3602CAMO only</b> )
--	LED3602BA.01	FRONT HOUSING (BRUSHED ALUMINIUM EFFECT) ( <b>LED3602BA only</b> )
--	LED3602CF.01	FRONT HOUSING (CARBON FIBRE EFFECT) ( <b>LED3602CF only</b> )
2	LED3602.02	BACK HOUSING 'BLACK' ( <b>LED3602 only</b> )
--	LED3602G.02	BACK HOUSING 'GREEN' ( <b>LED3602G only</b> )
--	LED3602Y.02	BACK HOUSING 'YELLOW' ( <b>LED3602Y only</b> )
--	LED3602R.02	BACK HOUSING 'RED' ( <b>LED3602R only</b> )
--	LED3602B.02	BACK HOUSING 'BLUE' ( <b>LED3602B only</b> )
--	LED3602CAMO02	BACK HOUSING 'CAMOUFLAGE' ( <b>LED3602CAMO only</b> )
--	LED3602BA.02	BACK HOUSING (BRUSHED ALUMINIUM EFFECT) ( <b>LED3602BA only</b> )
--	LED3602CF.02	BACK HOUSING (CARBON FIBRE EFFECT) ( <b>LED3602CF only</b> )
3	LED3602G.03	COVER FOR FRONT HOUSING 'SILVER'
4	LED3602.04	HANDLE 'BLACK' ( <b>LED3602 only</b> )
--	LED3602G.04	HANDLE 'GREEN' ( <b>LED3602G only</b> )
--	LED3602Y.04	HANDLE 'YELLOW' ( <b>LED3602Y only</b> )
--	LED3602R.04	HANDLE 'RED' ( <b>LED3602R only</b> )
--	LED3602B.04	HANDLE 'BLUE' ( <b>LED3602B only</b> )
--	LED3602CAMO04	HANDLE 'CAMOUFLAGE' ( <b>LED3602CAMO only</b> )
--	LED3602BA.04	HANDLE (BRUSHED ALUMINIUM EFFECT) ( <b>LED3602BA only</b> )
--	LED3602CF.04	HANDLE (CARBON FIBRE EFFECT) ( <b>LED3602CF only</b> )
5	LED3602G.05	PIVOT BOX (LARGE)
6	LED3602G.06	SWITCH CAP SUPPORT

Item	Part No.	Description
7	LED3602G.07	BALL ARM PLATE
8	LED3602G.08	HEAD LENS COVER
9	LED3602G.09	CHARGING INDICATOR CAP
10	LED3602G.10	HOOK PLATE
11	LED3602G.11	HOOK
12	LED3602G.12	ROTATING SUPPORT (SMALL)
13	LED3602G.13	PIVOT PROTECTION RING
14	LED3602G.14	PIVOT PROTECTION RING
15	LED3602G.15	ROTATING SUPPORT PIN
16	LED3602G.16	ROTATING SUPPORT BAR
17	LED3602G.17	HEAD LED LENS
18	LED3602G.18	SMD LENS
19	LED3602G.19	CHARGING SOCKET COVER
20	LED3602G.20	SWITCH CAP
21	LED3602G.22	BOTTOM MAGNET(C/W MAGNET HOUSING)
22	LED3602G.22	BOTTOM MAGNET(C/W MAGNET HOUSING)
23	LED3602G.23	HOUSING MAGNET
24	LED3602G.24	MAGNET COVER
25	LED3602G.25	PIVOT
26	LED3602G.26	SWITCH BUTTON SUPPORT
27	LED3602G.27	WAVE SPRING
28	LED3602G.28	SPRING
29	LED3602G.29	PCB SUPPORT PLATE
30	LED3602G.30	75SMD PCB
31	LED3602G.31	SWITCH BUTTON
32	LED3602V3.32	PCB
33	LED3602G.33	HEAD LED PCB
34	LED3602G.34	BATTERY
35	LED3602G.35	STICKER
36	LED3602G.36	STICKER
37	LED3602G.37	BATTERY PROTECTION FOAM
38	LED3602G.38	BATTERY PROTECTION FOAM
39	LED3602G.39	FOAM
41	LED3602G.41	MICRO USB WITH 5PIN CABLE

**NOTE:** It is our policy to continually improve products and as such we reserve the right to alter data, specifications and component parts without prior notice.

**IMPORTANT:** No liability is accepted for incorrect use of product.

**WARRANTY:** Guarantee is 12 months from purchase date, proof of which will be required for any claim.

**Sealey Group**, Kempson Way, Suffolk Business Park, Bury St Edmunds, Suffolk. IP32 7AR



01284 757500



01284 703534



sales@sealey.co.uk



www.sealey.co.uk