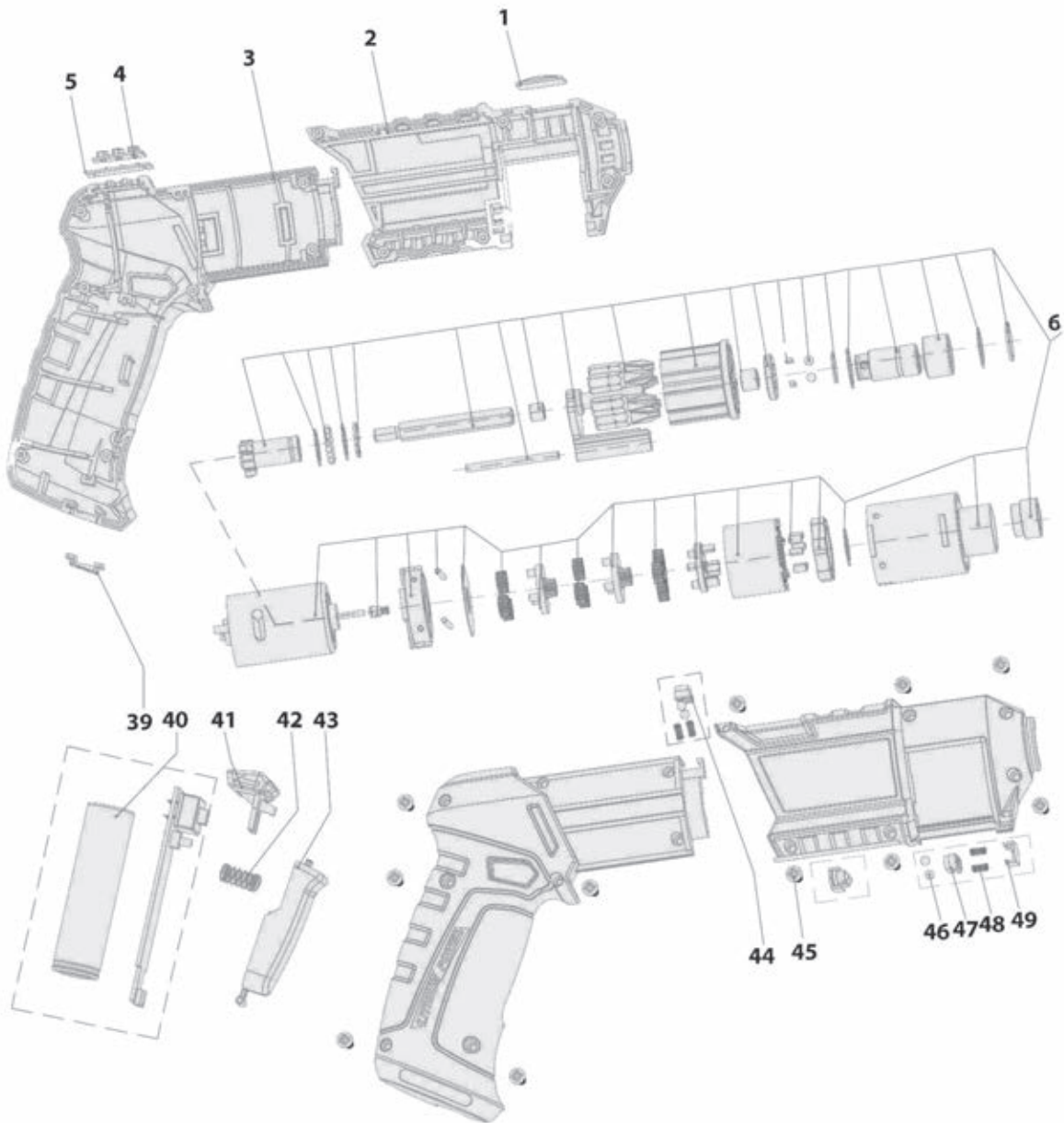


Parts Information:  
**Cordless Screwdriver Quick Select 14pc**  
**3.7V Lithium-ion USB**  
**Model No: CP36MS**



Item	Part No.	Description
1	CP36MS.01	TRANSPARENT SCREEN
2	CP36MS.02	HOUSING
3	CP36MS.03	HOUSING (HANDLE)
4	CP36MS.04	FUNCTION BUTTON
5	CP36MS.05	FUNCTION PCB
6	CP36MS.06-38	GEARBOX & MOTOR ASS'Y
39	CP36MS.39	CHARGING CONNECTOR
40	CP36MS.40	LITHIUM-ION BATTERY 3.7V
41	CP36MS.41	FORWARD/REVERSE LEVER

Item	Part No.	Description
42	CP36MS.42	SWITCH TRIGGER SPRING
43	CP36MS.43	SWITCH TRIGGER
44	CP36MS.44	STEEL BALL BRACKET (A)
45	CP36MS.45	SELF TAPPING SCREW (ST2.5x12)
46	SB-3.5	STEEL BALL 3.5mm
47	CP36MS.47	STEEL BALL BRACKET (B)
48	CP36MS.48	STEEL BALL SPRING
49	CP36MS.49	STEEL BALL BRACKET SEAT
--	CP36MS.50	USB CHARGING CABLE (NOT SHOWN)

**NOTE:** It is our policy to continually improve products and as such we reserve the right to alter data, specifications and component parts without prior notice.

**IMPORTANT:** No liability is accepted for incorrect use of product.

**WARRANTY:** Guarantee is 12 months from purchase date, proof of which will be required for any claim.

**Sealey Group**, Kempson Way, Suffolk Business Park, Bury St Edmunds, Suffolk. IP32 7AR



01284 757500



01284 703534



sales@sealey.co.uk



www.sealey.co.uk