



RECHARGEABLE POCKET FLOODLIGHT WITH MAGNET 360° 7W COB LED

MODEL NO: LED700P Series

Thank you for purchasing a Sealey product. Manufactured to a high standard, this product will, if used according to these instructions, and properly maintained, give you years of trouble free performance.

IMPORTANT: PLEASE READ THESE INSTRUCTIONS CAREFULLY. NOTE THE SAFE OPERATIONAL REQUIREMENTS, WARNINGS & CAUTIONS. USE THE PRODUCT CORRECTLY AND WITH CARE FOR THE PURPOSE FOR WHICH IT IS INTENDED. FAILURE TO DO SO MAY CAUSE DAMAGE AND/OR PERSONAL INJURY AND WILL INVALIDATE THE WARRANTY. KEEP THESE INSTRUCTIONS SAFE FOR FUTURE USE.



Refer to instructions

1. SAFETY

1.1. GENERAL

- ✓ Ensure the lamp is fully charged before initial use.
- ✗ **DO NOT** turn the lamp on when it is being charged.
- ✗ **DO NOT** shine directly into your, other person's or an animal's eyes.
- ✗ **DO NOT** allow children to use the lamp.
- ✗ **DO NOT** handle or move the lamp whilst it is being charged.
- ✗ **DO NOT** use the lamp if you suspect that the battery, the lamp casing or the cable is damaged. Consult your Sealey Stockist.
- ✗ **DO NOT leave battery in a discharged state, recharge battery immediately. Before storage, fully recharge the battery, subsequently recharge the battery at least once every six months of non-use.**

1.2. BATTERY SAFETY

- **WARNING!** To reduce the risk of burns or fire:
 - ✗ **DO NOT** Attempt to open, dismantle, modify or service the battery pack.
 - ✗ **DO NOT** Crush, puncture, short external contacts or dispose of in fire or water.
 - ✗ **DO NOT** Expose to temperatures above 40°C or below -10°C.
 - ✗ **DO NOT** Expose to direct sunlight for long periods of time.
 - ✗ **DO NOT** Expose to moisture.
- **WARNING!** Do not place the lamp face down while in use.
- ✓ Replace only with the battery pack designated for this product.
- ✓ Recycle or dispose of used battery as stipulated by local regulation.
- ✓ If the electrolyte in the cells gets on your skin, wash thoroughly with soap and water. If it gets in your eyes, rinse thoroughly with cool water and seek immediate medical attention.

2. INTRODUCTION

Incredibly tough aluminium housing with sturdy handle which can rotate through 360°. Virtually indestructible and one of the most durable floodlights available. Also fitted with a strong magnet, making it simple and easy to direct up to 700 lumens of light. Three light output settings 100/350/700 lumens. Features three LED battery level indicator. Fitted with a high quality 3.7V 2.6Ah Li-ion battery. Charges via a USB Type-C lead. (Supplied with USB Type-C Cable).

3. SPECIFICATION

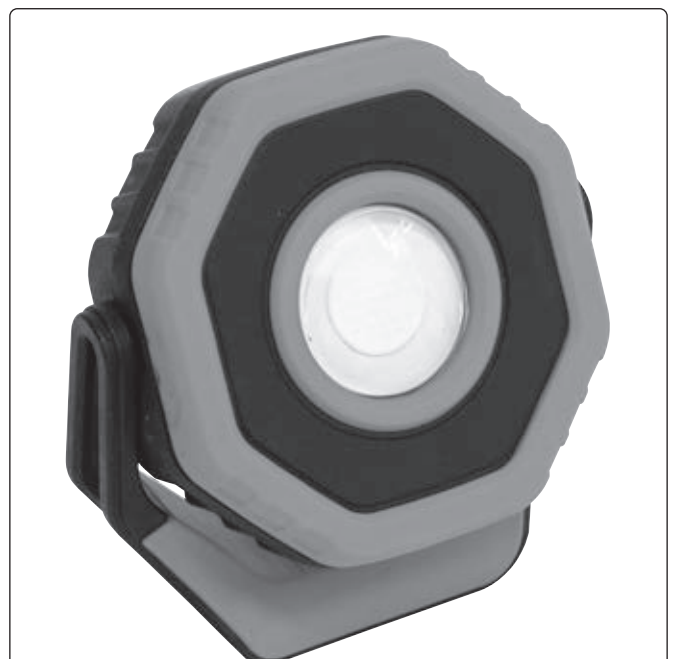
Model No:.....LED700P Series
 Battery:3.7V 2.6Ah Li-ion
 Charging Time:.....4hr
 Operating Time: Low:10hr / Mid:4hr / High:2hr
 Lumen Output:Low:100lm / Mid:350lm / High:700lm
 IP Rating:IP65
 LED Qty:7W COB LED
 Length:95mm

The battery fitted to this lamp is considered to be a consumable item and its ability to accept a charge will reduce over time.

We will provide warranty against mechanical and electrical defect for a period of one year - this does not cover fair wear and tear.

If the battery is not properly charged before first use, or regularly conditioned, its capacity will diminish. Under these circumstances we will not replace the battery regardless of whether it is less than one year old.

NOTE: The lithium battery does not suffer from memory effect and once fully charged may be stored for up to six months without another charge.



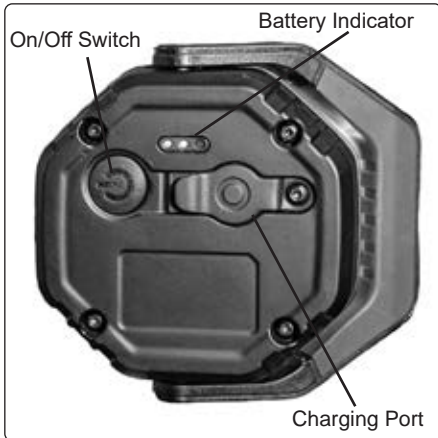
4. OPERATION

4.1. CHARGING

- 4.1.1. Insert the micro USB plug on the USB cable into the charging port on the rear of the lamp.
- 4.1.2. Plug the other end of the USB cable into a 5V USB outlet.
 - **WARNING! DO NOT** turn lamp on whilst charging.
- 4.1.3. The battery indicator will blink during charging.
- 4.1.4. When the battery has charged fully the battery indicator will remain lit.

4.2. USE OF LAMP

- 4.2.1. Direct the lens away from your eyes, other people and animals before switching on.
- 4.2.2. Push the ON/OFF switch once for ECO mode, twice for Normal mode and a third time for Full power mode.
- 4.2.3. The lamp may be held by the handle or attached to any ferrous surface by using the magnet. When the light is attached by the magnet, it can be rotated through 360° for more precise positioning.
IMPORTANT: Only use the cable supplied with the product.



ENVIRONMENT PROTECTION

Recycle unwanted materials instead of disposing of them as waste. All tools, accessories and packaging should be sorted, taken to a recycling centre and disposed of in a manner which is compatible with the environment. When the product becomes completely unserviceable and requires disposal, drain any fluids (if applicable) into approved containers and dispose of the product and fluids according to local regulations.



WEEE REGULATIONS

Dispose of this product at the end of its working life in compliance with the EU Directive on Waste Electrical and Electronic Equipment (WEEE). When the product is no longer required, it must be disposed of in an environmentally protective way. Contact your local solid waste authority for recycling information.



BATTERY REMOVAL

Under the Waste Batteries and Accumulators Regulations 2009, Jack Sealey Ltd are required to inform potential purchasers of products containing batteries (as defined within these regulations), that they are registered with Valpak's registered compliance scheme. Jack Sealey Ltd's Batteries Producer Registration Number (BPRN) is BPRN00705.

Note: It is our policy to continually improve products and as such we reserve the right to alter data, specifications and component parts without prior notice.

Important: No Liability is accepted for incorrect use of this product.

Warranty: Guarantee is 12 months from purchase date, proof of which is required for any claim.

Sealey Group, Kempson Way, Suffolk Business Park, Bury St Edmunds, Suffolk. IP32 7AR



01284 757500



01284 703534



sales@sealey.co.uk



www.sealey.co.uk