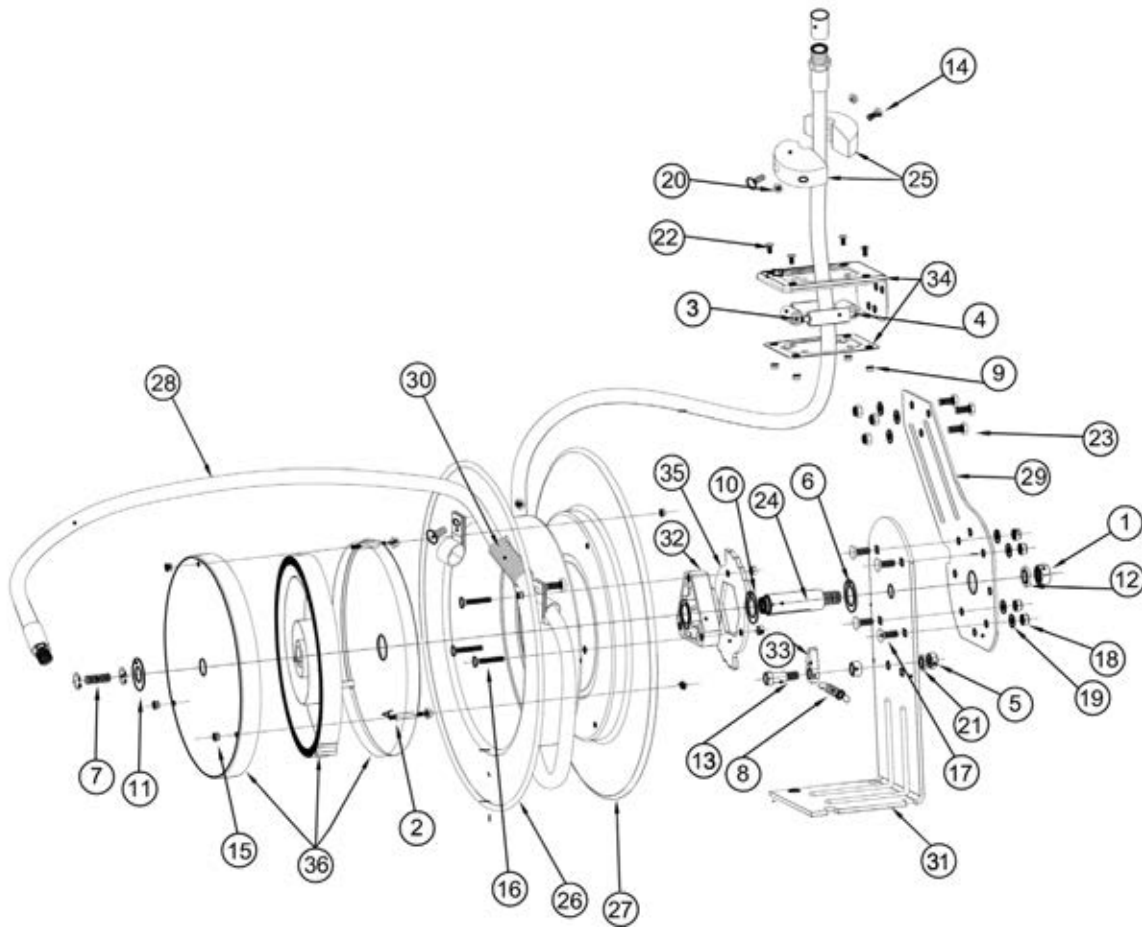




Parts Information:
Heavy-Duty Retractable Water Hose Reel
15m Ø13mm ID Rubber Hose
Model No: WHR1512



Item	Part No.	Description
1	SN16.S	Steel Nut M16 Zinc
2	WHR1512.02	Threaded Stud 6mm
3	WHR1512.03	Roller (Short) 59mm
4	WHR1512.04	Roller (Long) 68mm
5	SN10.S	Steel Nut M10 Zinc
6	FWM20.S	Flat Washer M20 Single
7	WHR1512.07	Threaded Stud 10mm
8	WHR1512.08	Spring for Latch Pawl
9	FN5.S	Flange Nut Serrated M5 Zinc
10	WHR1512.10	Spacer
11	FWM20.S	Flat Washer M20 Single
12	SWM16.S	Spring Washer M16 Zinc
13	WHR1512.13	Tightening Bolt for Latch Pawl
14	WHR1512.14	Phillips Screw 6mm
15	FN6.S	Flange Nut Serrated M6 Zinc
16	WHR1512.16	Carriage Bolt 6mm
17	WHR1512.17	Carriage Bolt 8mm
18	NLN8.S	Nyloc Nut M8 Zinc

Item	Part No.	Description
19	FWM8.S	Flat Washer M8 Zinc
20	SN6.S	Steel Nut M6 Zinc
21	FWM10.S	Flat Washer M10 Zinc
22	WHR1512.22	Phillips Screw 5mm
23	SS816.S	Hex Head Set Screw M8 x 16 Zinc
24	WHR1512.24	Centre Axle
25	WHR1512.25	Ball Stop Assembly
26	WHR1512.26	Drum (Right Side)
27	WHR1512.27	Drum (Left Side)
28	WHR1512.28	Hose Assembly
29	WHR1512.29	Arm
30	WHR1512.30	Guard Spring
31	WHR1512.31	Base
32	WHR1512.32	Hub Bearing Assembly
33	WHR1512.33	Latch Pawl
34	WHR1512.34	Guide Roller Bracket Assembly
35	WHR1512.35	Ratchet Pawl
36	WHR1512.36	Main Spring Assembly

NOTE: It is our policy to continually improve products and as such we reserve the right to alter data, specifications and component parts without prior notice. There may be alternative versions of this product, please contact us should you require this information.

IMPORTANT: No liability is accepted for incorrect use of product. Spare parts must be fitted by a competent person

WARRANTY: Guarantee is 12 months from purchase date, proof of which will be required for any claim.

Sealey Group, Kempson Way, Suffolk Business Park, Bury St Edmunds, Suffolk. IP32 7AR



01284 757500



01284 703534



sales@sealey.co.uk



www.sealey.co.uk