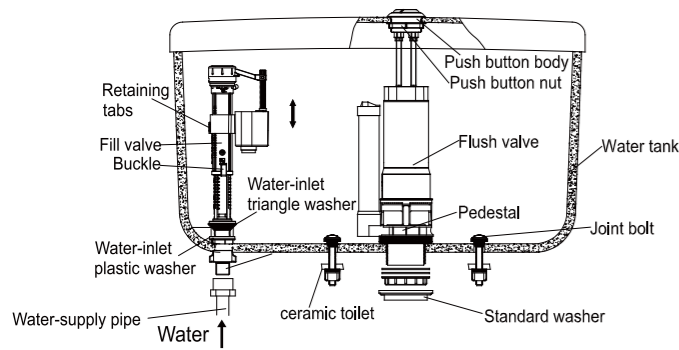


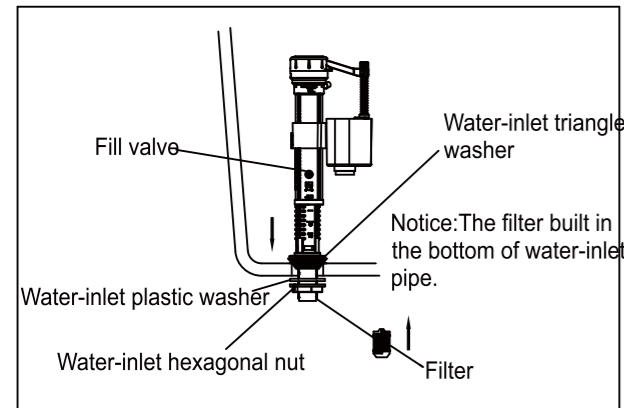
Dual Flush Valve Instruction

Installation Layout



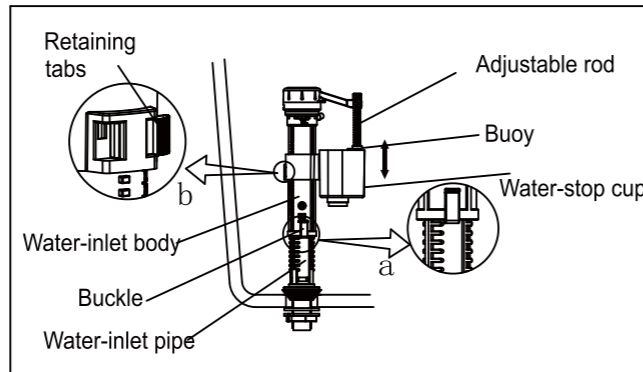
1. Please read carefully the following installation instructions. In order to avoid injuring body or damaging equipment, please install the equipment following the instructions step by step.
2. The instructions are compiled according to the up-to-date product information. We reserve the rights to make the changes about specifications, packaging and supplying without prior notice.
3. When valve installed, the critical level mark on fill valve (identified by a CL mark on valve body) should be at least 1" (=25.4mm) above top of overflow pipe. This is a plumbing code.
4. We shall not be responsible for any failure of using any parts from other companies.
5. Water temperature: 2°C-45°C.

I、 Fill Valve Installation

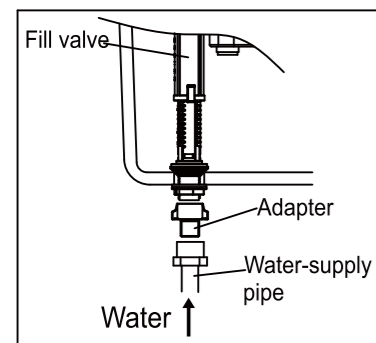


Put fill valve & water-inlet triangle washer insert into water-inlet hole of water tank, then, cover water-inlet flat washer, plastic washer and hexagonal nut in turn from the bottom of fill valve. Fastening water-inlet hexagonal nut and make a proper adjust according to the size of water tank.

II、 Water level adjustment



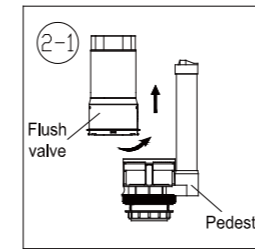
III、 Water supply pipe installation



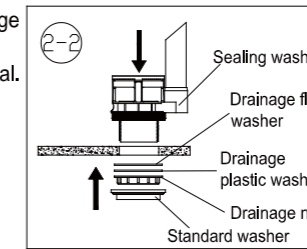
Connect water -supply pipe and built in adapter or filter according to your actual need.

IV、 Flush Valve Installation (According to the actual need)

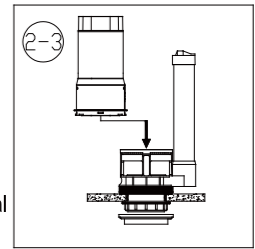
Two-piece flush valve installation



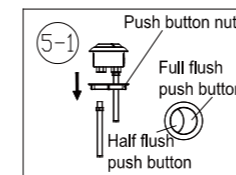
Circumrotate drainage body and make it remove from pedestal.



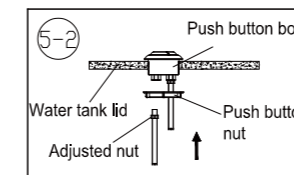
Let pedestal insert into outfall from inside of water tank, cover the sealing washer, drainage plastic washer, then, circumrotate drainage nut and cover the standard washer, and it can adjust the put angle properly according to the actual size of water tank.



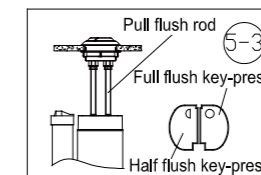
V、 Push-button Installation



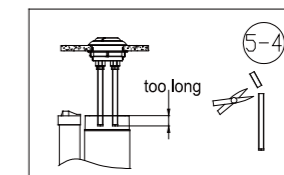
Screw off push button nut.



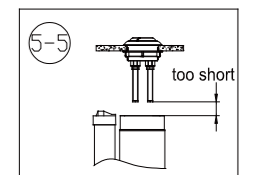
Let push button insert into water tank lid middle hole, screwing on push button nut from the bottom of water tank lid, then, screwing sure that it is firm.



Please confirm pull flush rod press the flush valve key-press part is upside, whether or not and check it is blocked or not.



Screw off pull flush rod, the cut part is upside.



Pull flush rod should aim at the full flush key-press.

Notice: If the products is different from the photo shown, please refer to the actual product.

Check out our full range of Bathroom Suites

Bathroom Suites By Range

Cloakroom Suites

Toilets

Bathroom Sinks / Wash Basins

Bidets

Baths

Wide variety of toilets

Close Coupled Toilets

Wall Hung Toilets

Back To Wall Toilets

Furniture unit toilets

Huge Selection of Baths

Acrylic Baths

Steel Baths

Shower baths

Freestanding baths

Small baths

Corner baths

Whirlpool baths

Don't forget the important bathroom suite extras

Bath panels

Toilet seats

plumbworld
Big brands, small prices.