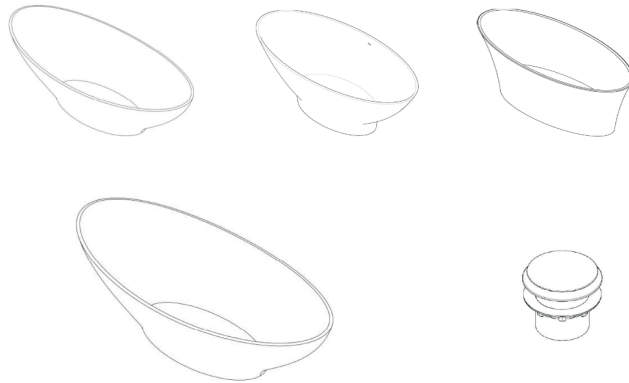


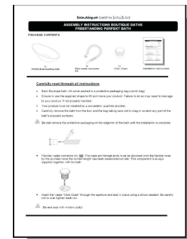
## ASSEMBLY INSTRUCTIONS FOR CIAN® BATH RANGE

### PACKAGE CONTENTS



1 x Freestanding Bath

1 x Click-Clack waste  
(not supplied unless  
ordered separately)



Installation  
Instructions

### Carefully Read through all instructions

Each Cian® Bath will come packed in a protective case with internal packaging.

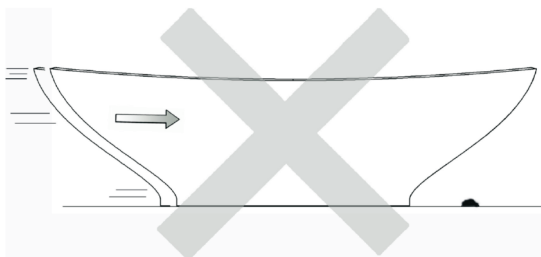
The Bath has been inspected and photographed before leaving our workshop.

The product **MUST** be installed by a qualified, competent Plumber.

Carefully remove the bath from the box, taking care not to drag or scratch any part of the exposed surfaces.



**Do not drag the bath over any surface Lift and place it in position**



**Do not drop your bath!**



**Always protect the surface of your bath when installing and handling - cardboard or an old blanket provides adequate protection on the floor.**



**Avoid getting cement, grit, sand or masonry products on to the surface.**



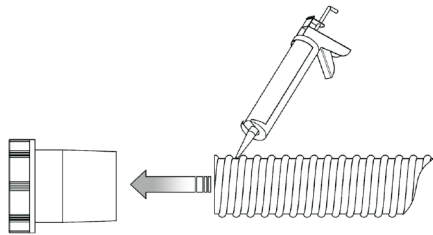
**Protect and cover the bath during installation. The bath may be damaged if no precautions are taken.**



**Never use Brown tape or Gaffer tape directly on to the surface. If the bath has to be repacked remember to avoid taping directly on to the surface of the bath.**



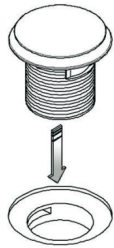
**Do not remove the protective packaging on the bath until installation is complete**



### IMPORTANT INFORMATION!

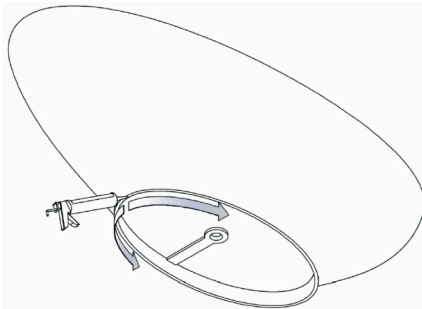
Your Installer will need to purchase a Flexible Waste Connector Kit.

Normally supplied by the Plumber or installer. Available from most plumbing wholesalers.

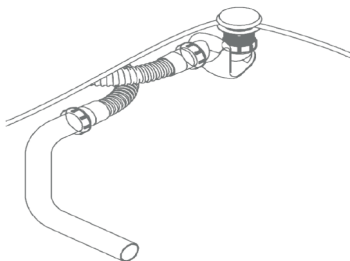


Insert the Click-Clack waste (bought separately) through the aperture and seal it in place using a silicone sealant. **DO NOT OVERTIGHTEN** the Backnut as this may cause the bath to crack.

Do not seal with window putty.



Attach waste fittings and fix your bath using white / clear bath sealant which must be applied to the bottom face of the bath. Clean off excess and be careful not to over-silicone.



Ensure the supplied flexible waste connector kit is securely connected to the bath and waste outflow system before positioning the bath

### Cutting an access hole in the plinth of a Thinn bath.

Note: The u-bend must always be fitted under the floor when fitting a Kurv Bath.

We recommend that the waste outlet should always go below floor level wherever possible.



### IMPORTANT

Please contact BC Designs for guidelines on cutting recesses into the plinths before commencing.

(0)1206 827100

Failure to do so will negate your warranty on the bath.