

Basin/Bath Taps, Basin/Bath Mixers Installation Instructions



Contents

1. Important Safety Information(P3)
2. General Information (P4)
 - 3.1. Flexi Connecting (P5)
 - 3.2. Basin Taps Installation(P6)
 - 3.3. Basin/Bath Fillers(P7)
 - 3.4. Basin, Bath/Shower Mixer(P8)
 - 3.5. Pillar Mounted Mixer (P9)
 - 3.6. Wall Mounted Basin(P10)
 - 3.7. Wall Mounted Bath Mixer(P11)
4. Operation(P12)
5. Maintenance (P13)
6. Trouble-Shooting(P14)
7. Hard water Regions in UK(P15)
8. Notes(P16)

Important Safety Information

1. Please read these instructions thoroughly and retain for future use.
2. All products supplied by AV are safe provided they are installed, used correctly and receive regular maintenance in accordance with these instructions.
3. This fitting needs to be installed in accordance with, and meet the requirements of the Water Supply(Water Fittings) Regulations 1999 and Scottish Byelaws 2004.
4. Remove all packaging and check the fitting for damage before starting installation.
5. Remember to turn off the mains water supply before connecting to any existing pipe work. Fitting isolating valves to the inlet feeds is recommended for ease of maintenance.

WARNING:

1. This product must be installed by a qualified plumber.
2. Before drilling into walls; check the hidden electrical wires, cables or water supply pipes. This can be checked with the aid of an electric detector. If power tools are used do not forget to:
-Wear eye protection and Unplug equipment after use!
3. Before installing the new fitting it is essential that you thoroughly flush through the pipework in order to remove any remaining swarf, solder, etc. Failure to carry out this procedure could cause problems or damage to the workings of the fitting.
4. Take care when handling the "Flexible connecting pipes"; do not bend, twist or crush them. Only tighten the pipes by hand.
5. This product must not be modified in any way as this will invalidate the guarantee.
6. On no account should any bathroom cleaner be used on this product as these can contain acids that aggressive/corrosive on finished surfaces!

Important Safety Information

1. This product has been tested to the Water Regulations Advisory Scheme (WRAS) and satisfies the requirements of Water Supply (Water Fittings) Regulation 1999 and current bylaws. For Full Installation Requirements & Notes (IRN) please visit www.wras.co.uk/directory.
2. Designed to comply with BS EN 200 for combination taps to be used within systems designed to BS 8558.
3. BS 8558 recommends hot water should be stored and distributed at a temperature of not less than 60C which will minimise the build-up of limescale in hard water areas.
4. If the fitting is installed to low pressure (tank fed), then the minimum distance from the highest installed position of the outlet to the underside of the cold tank should be at least 2 meters to ensure adequate performance, please note OR SMBAS C requires 3 meters if installed on a low pressure system.
5. This tap should be installed in compliance with the Water Regulations. Where the supplies are unbalanced, i.e. Hot water from cylinder tank/ cold from mains, approved check-valves must be fitted in the supply pipes.

For further details contact your local Water Authority.

Basin Flexi Installation Instruction

DO NOT USE ANY TOOL TO FIX THE FLEXIBLE CONNECTIONS

WATERTIGHTNESS IS NOT IMPROVED.

THE O-RING AND THE CONNECTION COULD BE DAMAGED

FIX THEM ONLY BY HAND

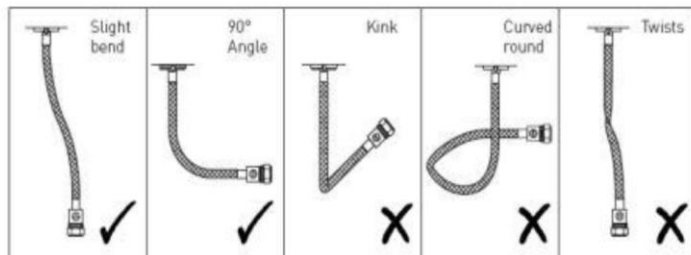
LAB TESTS HAVE DEMONSTRATED THE CONNECTIONS FIXED IN THIS WAY RESIST PRESSURES HIGHER THAN 130 Bar



Flexible Connecting Pipes

Care must be taken when connecting the flexible connection pipes to the household pipework to ensure they do not bend sharply and kink or twist.

See below for recommended ways to fit the flexible connecting pipes



Important: Failure to follow these guidelines may result in poor performance and damage to the flexible connecting pipes

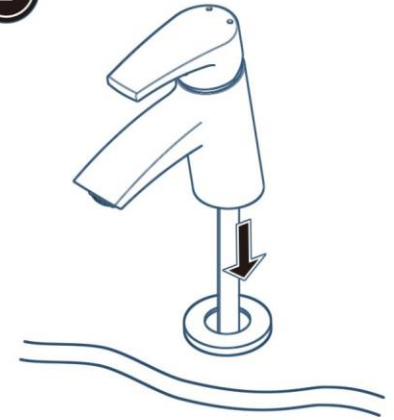
Installation- Basin Taps

1



Screw the flexi / copper tails into the bottom of the mixer body by **hand only** (**DO NOT OVERTIGHTEN**)

2



Place the plinth over the hole in the basin and feed the flexi/ copper tails through.

3



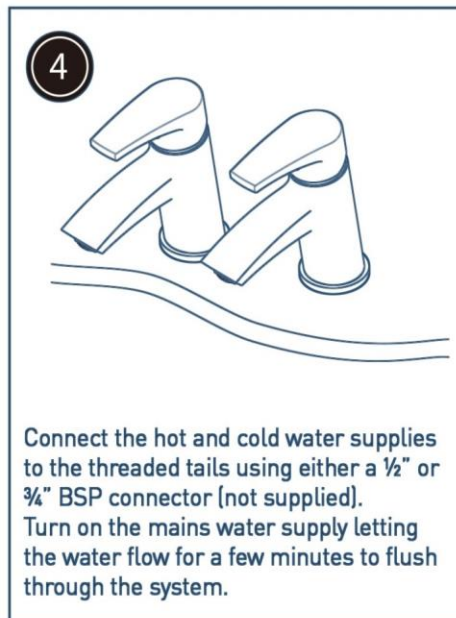
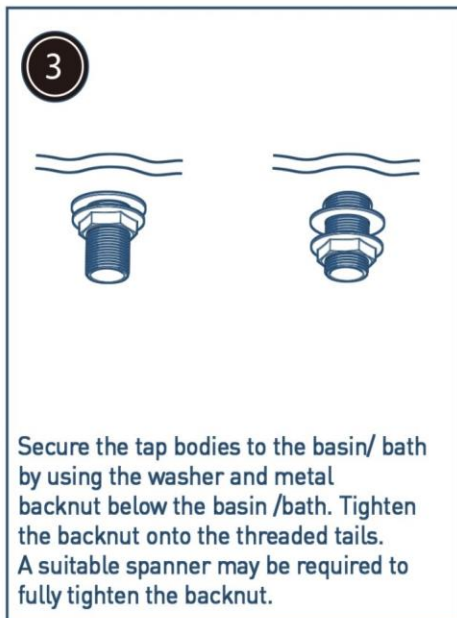
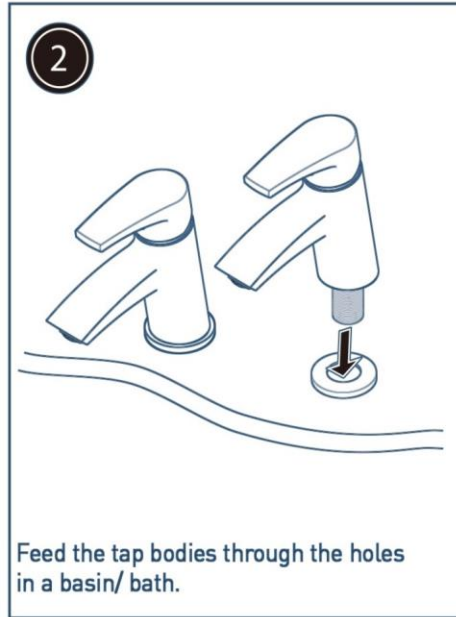
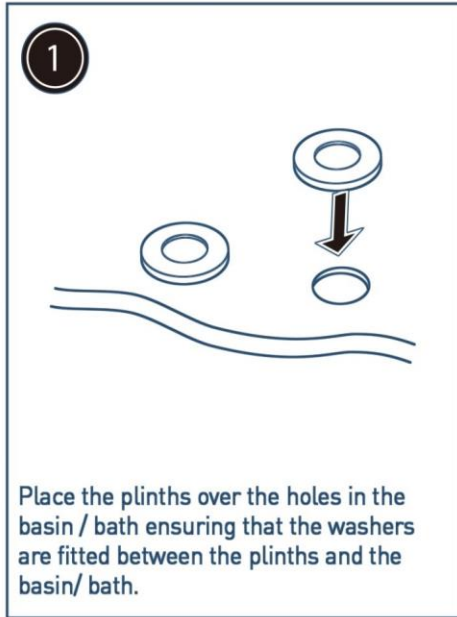
Slide the 'C' shaped rubber washer and the 'C' shaped metal washer onto the fixing rods up to the underside of the basin. To secure the mixer in place tighten the fixing nuts onto the fixing rods until they fully tightened against the 'C' shaped metal washer. A suitable spanner can be used to fully tighten the fixing nuts.

4

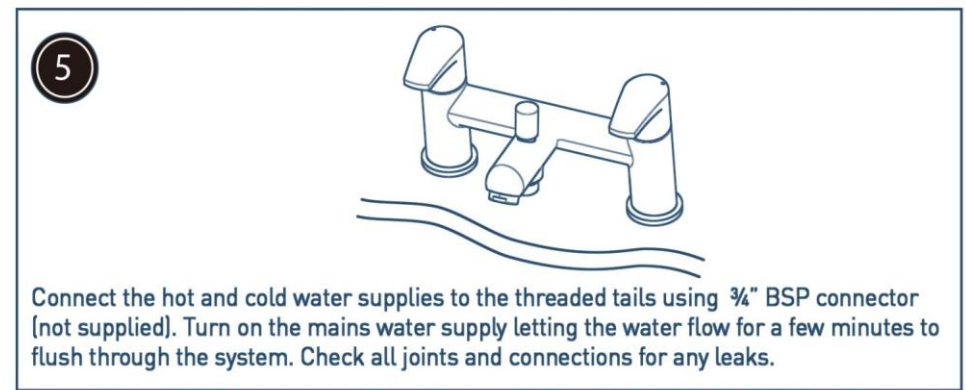
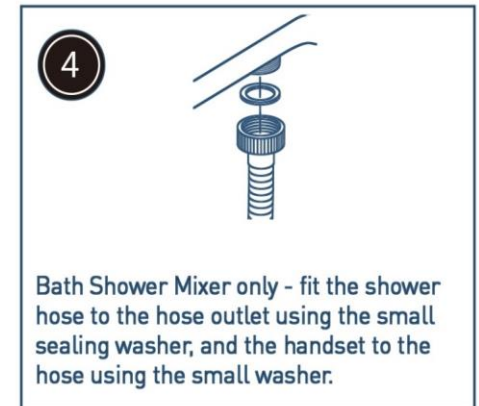
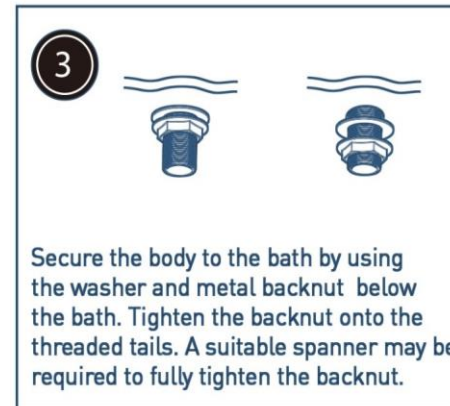
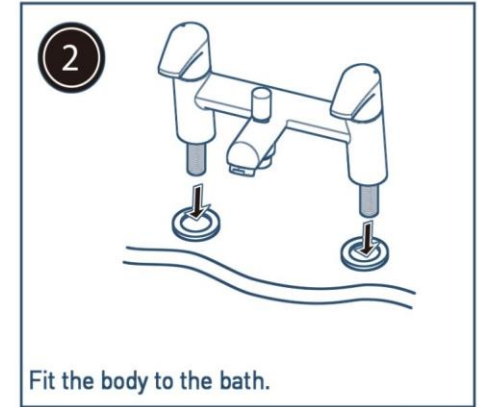
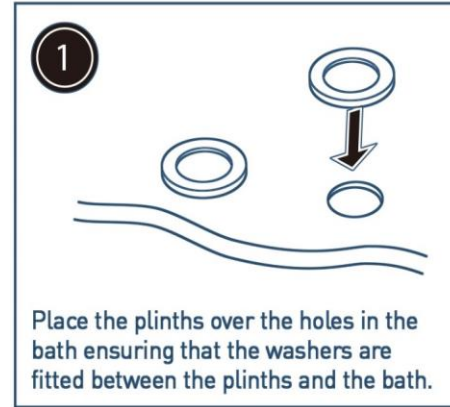


Connect the flexi/ copper tails to the hot and cold water supplies. Turn on the mains water supply letting the water flow for a few minutes to flush through the system. Check all joints and connections for any leaks.

Installation- Basin or Bath Filler



Installation- Bath or Bath/Shower Mixer



Pillar Mounted Bath Shower Mixer & Bath Filler

Installation and Maintenance Instructions

REMOVING OLD TAPS OR MIXER

- 1 A "Tap Spanner" may be required. This can be purchased in store.
- 2 Ensure mains water supply is turned off at the stopcock or service valves.
- 3 After disconnecting the water supply, drain the pipework.
- 4 Unscrew the nuts connecting the water pipes to the fittings.
- 5 Be careful to save and inspect the fibre washer between the base of the tap tails and the water pipe.

FITTING YOUR NEW MIXER

Fitting your new mixer is easy when you follow these simple step-by-step instructions.

- 1 Identify all components.

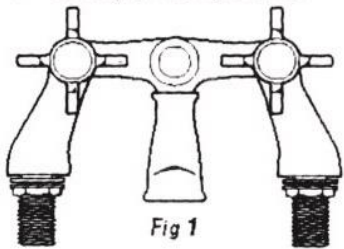
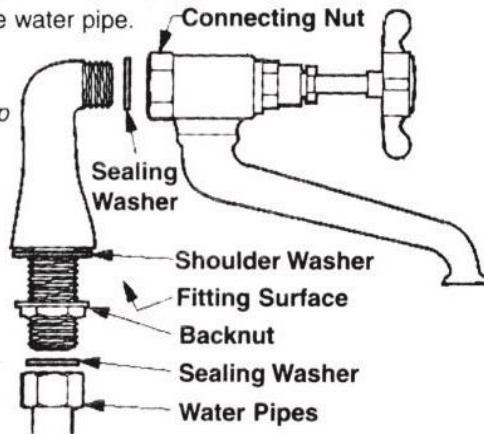


Fig 1



- 2 Prior to installation flush out pipework to remove debris.
- 3 Place washers into connecting nuts at rear of body prior to assembly of pillars.
- 4 Screw pillars to body ensuring that each pillar is angled outwards (See Fig 1) from the connecting nut to give correct centres to fit on bath. Fully tighten nuts.
- 5 Place washers onto threaded section of pillars. Insert pillars through holes in bath.
- 6 From underside fit and tighten backnut until mixer is secure. Do not overtighten, otherwise you risk damage to bath.
- 7 Reconnect supply pipes checking that the sealing washers are in good condition (if not replace). Again do not overtighten. It is recommended that the hot water supply be connected to the left hand fitting when installed.
- 8 Turn on water supply to refill system and check for leaks. If any leaks are noticed, check that the connections are adequately tightened. Once the connections are satisfactory, you can then connect your shower kit (if applicable)

This product should be fitted in accordance with Water ByLaw Regulations. Check valves should be fitted where necessary.

AFTERCARE INSTRUCTIONS

Whilst modern plating techniques are used in the manufacture of this item, the surfaces will wear if cleaned incorrectly. Clean this product with a soft cloth and clean water. The use of any abrasive material will invalidate the guarantee.

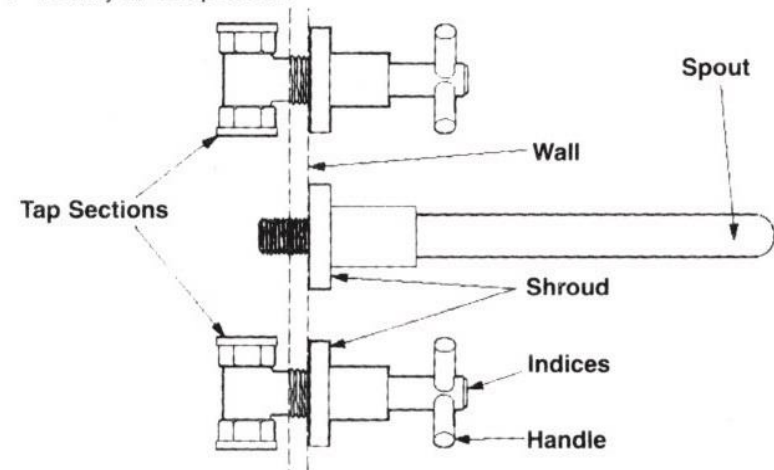
Wall Mounted Basin Mixer

Installation and Maintenance Instructions

FITTING YOUR NEW MIXER

Fitting your new mixer is easy when you follow these simple step-by-step instructions.

- 1 Identify all components.



- 2 Ensure that the wall cavity or duct is large enough to make all necessary connections. Check that min/max depth of cavity is measured from behind the finished surface of the wall.
- 3 Prior to installation flush out pipework to remove any debris.
- 4 Connect the water supply and outlet pipework to the valve section and fully tighten fittings.
- 5 Connect the outlet pipework from the tap sections to the spout and fully tighten fittings.
- 6 Turn on water supply and test for leaks.
- 7 If no leaks are found, finish wall plastering and tiling as required.

This product should be fitted in accordance with Water ByLaw Regulations. Check valves should be fitted where necessary.

AFTERCARE INSTRUCTIONS

Whilst modern plating techniques are used in the manufacture of this item, the surfaces will wear if cleaned incorrectly. Clean this product with a soft cloth and clean water. The use of any abrasive material will invalidate the guarantee.

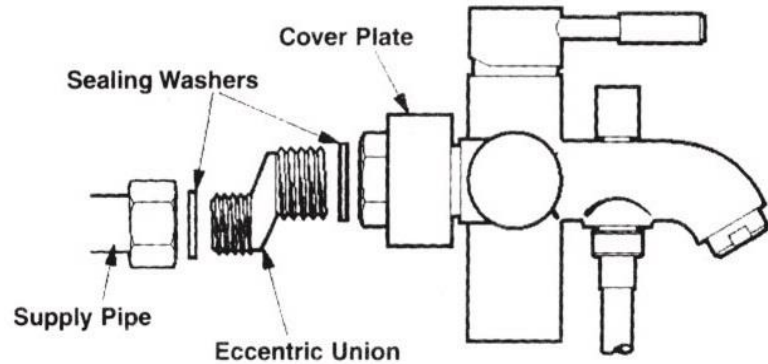
Wall Mounted Bath Shower Mixer

Installation and Maintenance Instructions

FITTING YOUR NEW MIXER

Fitting your new mixer is easy when you follow these simple step-by-step instructions.

- 1 Identify all components.



- 2 **IMPORTANT!** Rinse out pipework prior to fitting.
- 3 After having rinsed the pipework, install the valve as a standard exposed fitting, with the hose outlet facing downwards.
- 4 When connecting the water supply to the valve, it is recommended that the hot supply is to the left and the cold supply to the right with the hose outlet from the bottom.
- 5 Connect the eccentric threaded wall unions to the supply pipes.
- 6 Ensure that the wall coverings are fitted to the mixer prior to the connection to the water supply.
- 7 Set the eccentric unions so they correspond with the valves inlets.
- 8 Fit the mixer to the unions, ensuring to fit the sealing washer, tighten with a spanner until watertight.
- 9 Turn on the water supply and check for leaks.

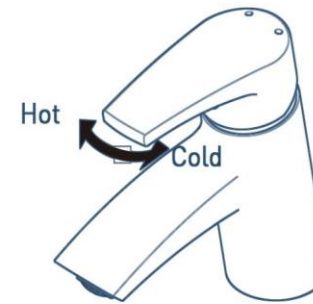
This product should be fitted in accordance with Water ByLaw Regulations
Check valves should be fitted where necessary.

AFTERCARE INSTRUCTIONS

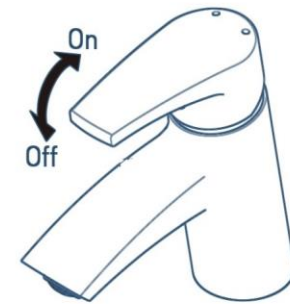
Whilst modern plating techniques are used in the manufacture of this item, the surfaces will wear if cleaned incorrectly. Clean this product with a soft cloth and clean water. The use of any abrasive material will invalidate the guarantee.

Operation

Temperature Control

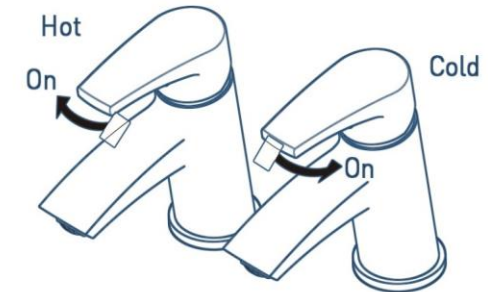


Flow Control



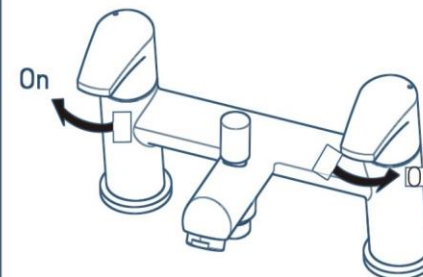
Basin Taps

Flow Control

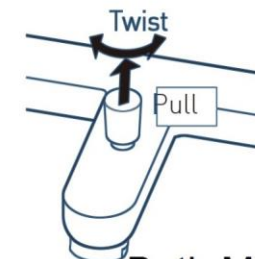


Basin/Bath Filler

Flow Control



Diverter Operation



Bath Mixer

Maintenance

General Cleaning

Your fitting has a high quality finish and should be treated with care to preserve the visible surfaces. All surfaces will wear if not cleaned correctly, the only safe way to clean your mixer is to wipe with a soft damp cloth. Stains can be removed using washing up liquid. All bath cleaning powders and liquids will damage the surface of your fitting, even the non-scratch cleaners.

Note: Never use abrasive detergents or disinfectants or those containing alcohol, hydrochloric acid or phosphoric acid.

Cleaning the Cartridge

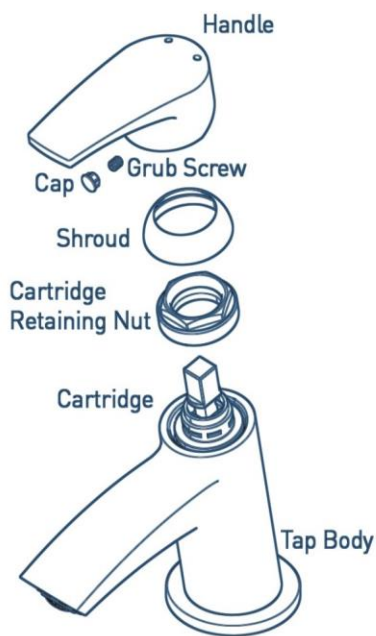
Before carrying out any maintenance, turn off the mains water supply and close any isolating valves.

Prise out the cap, loosen the grub screw. Remove the handle and shroud. Remove the cartridge retaining nut using a suitable spanner.

Remove the cartridge and clean thoroughly under cold water to remove any build up of limescale or debris.

If necessary replace the cartridge using parts supplied

Replace the cartridge into the body, tighten the cartridge retaining nut using suitable spanner. Replace the shroud and handle. Tighten the grub screw and push fit the cap.



Troubleshooting

Symptom	Cause	Remedy
No flow or low flow rate	Partially closed isolation valve.	Open isolation valve.
	Instantaneous water heater cycles on and off as flow rate or pressure is too low.	Increase water flow rate or pressure through system to meet required minimum working pressure of tap.
	Head of water is below the minimum distance required.	Refer to "General" for details
	Hot or cold water being drawn off elsewhere causing pressure changes or instantaneous boiler temperature changes.	Do not use other water outlets when using the taps.
Water dripping from taps	Airlock or partial blockage in the supply pipework.	Flush through pipework to ensure removal of debris and any airlocks.
	This is normal for a short time after using the taps.	This is caused by capillary action, the build up of water in the tap body.
Taps do not turn on	If water continues to drip, possible build up of debris/ limescale in the cartridge/ valve	Remove and clean the cartridge, refer to 'Maintenance' section
	Closed isolation valve.	Open isolation valve.
	Mains water supply turned off.	Turn on mains water supply.

Hard Water Regions in the UK

Notes

Please use this space to add any notes you or your installer may have regarding the plumbing system / installation of this product.

