

MAKPAC CONNECTOR CASES



Satisfying the professional's needs

Makita UK

Michigan Drive, Tongwell, Milton Keynes, Buckinghamshire, MK15 8JD

T: 01908 211678 F: 01908 211400

www.makita.co.uk

Specification shown may change due to our policy of constant improvements.

Subject to availability. E&OE.

98N365 0114

MAKPAC Cases

Professional connector cases



Case 1
821549-5

10.5 cm



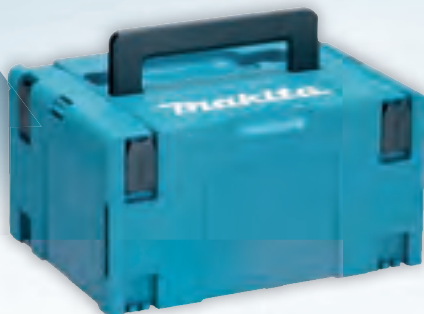
Case 2
821550-0

15.5 cm



Case 3
821551-8

21.5 cm



Case 4
821552-6

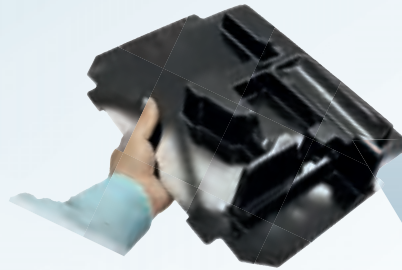
31.5 cm



MAKPAC

The connector case system designed for the professional.

Strong and collapsible carry handles make the connector cases easy to move and store. Rounded grips make it easy to remove the individual cases.



MAKPAC

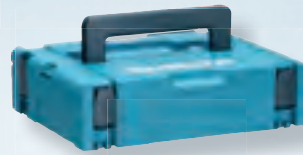
Connector Case System

The MAKPAC connector case system consists of four cases varying in height. The cases can be stacked on top of each other and locked together with the locking latches.

The interconnected cases take up less storage space and are easy to transport to and from the work site.

Select the moulded inlay for your machine then select the case size to meet your requirements.

Choose the correct inlay and case for your machine



821549-5 Case 1
39.5 x 29.5 x 10.5 cm



821550-0 Case 2
39.5 x 29.5 x 15.5 cm



821551-8 Case 3
39.5 x 29.5 x 21.5 cm



821552-6 Case 4
39.5 x 29.5 x 31.5 cm

Moulded Inlays

837803-7	4329, 4350CT, 4350FCT, 4351FCT, JV0600
837695-4	DA331D
837866-3	DF030D, DF330D, HP330D, TD090D, TW100D
838038-3	HP1631, HP1640, HP1641
838039-1	HP2051, HP2051F, HP2071, HP2071F
837664-5	JR100D, JR102D
837665-3	JV100D
837948-1	Power Source

837809-5	DBO140, DBO180
838040-6	DDA340, DDA341, DDA350, DDA351
837916-4	DDF343, DDF441, DDF446, DDF448, DDF451, DDF456, DDF458, DDF459, DHP343, DHP441, DHP446, DHP448, DHP451, DHP453, DHP456, DHP459, DDF480, DHP458, DHP480
837805-3	DFS441, DFS451
837806-1	DGD800
837678-4	DJN160, DJN161
837636-0	DJS160, DJS161
837639-4	DJV140, DJV180, DJV182
837789-5	DJV181
837675-0	BO4900V
837640-9	DPT350, DPT351
837670-0	DTD129, DTD134, DTD136, DTD146, DTD147, DTP130, DTP131, DTP140, DTP141, DTW251
837644-1	DTL060, DTL061
837672-6	GA5040, GA5040C, GA5041, GA5041C, SA5040C
837651-4	HR2300, HR2600
837662-9	HS300D
837630-2	JN3201, JS3201
837646-7	RP0900
837660-3	RP0910, RP1110C
837673-4	TM3000C

837652-2	9403
837653-0	9404
837658-0	9911
837628-9	DSS500, DSS501, DCS550
837632-8	DGA452
837634-4	DHR202
837641-7	DHR241
837808-7	DKP180
837654-8	DO6030
837655-6	DO6040
837648-3	DPJ140, DPJ180
837642-5	DSS610
837671-8	DTM40, DTM50, DTM51
837645-9	DTW450
837659-8	KP0800, KP0810, KP0810C
837661-1	PJ7000

837657-2	5008MG, 5604R, 5704RK
837649-1	DHR242, DHR243
837650-6	DHR262
873988-9	DHR263, DHR264
837861-3	DHS710, DHS710
837647-5	RP1801, RP2301FC
837247-1	RT0700C
837945-7	SP6000

Locking Latch 453974-8

